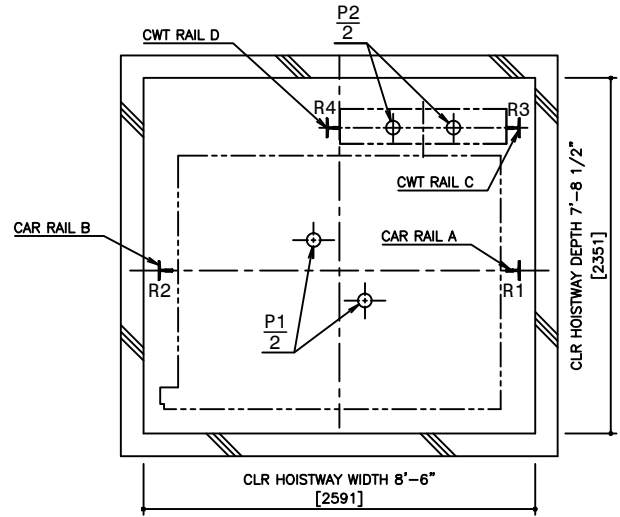
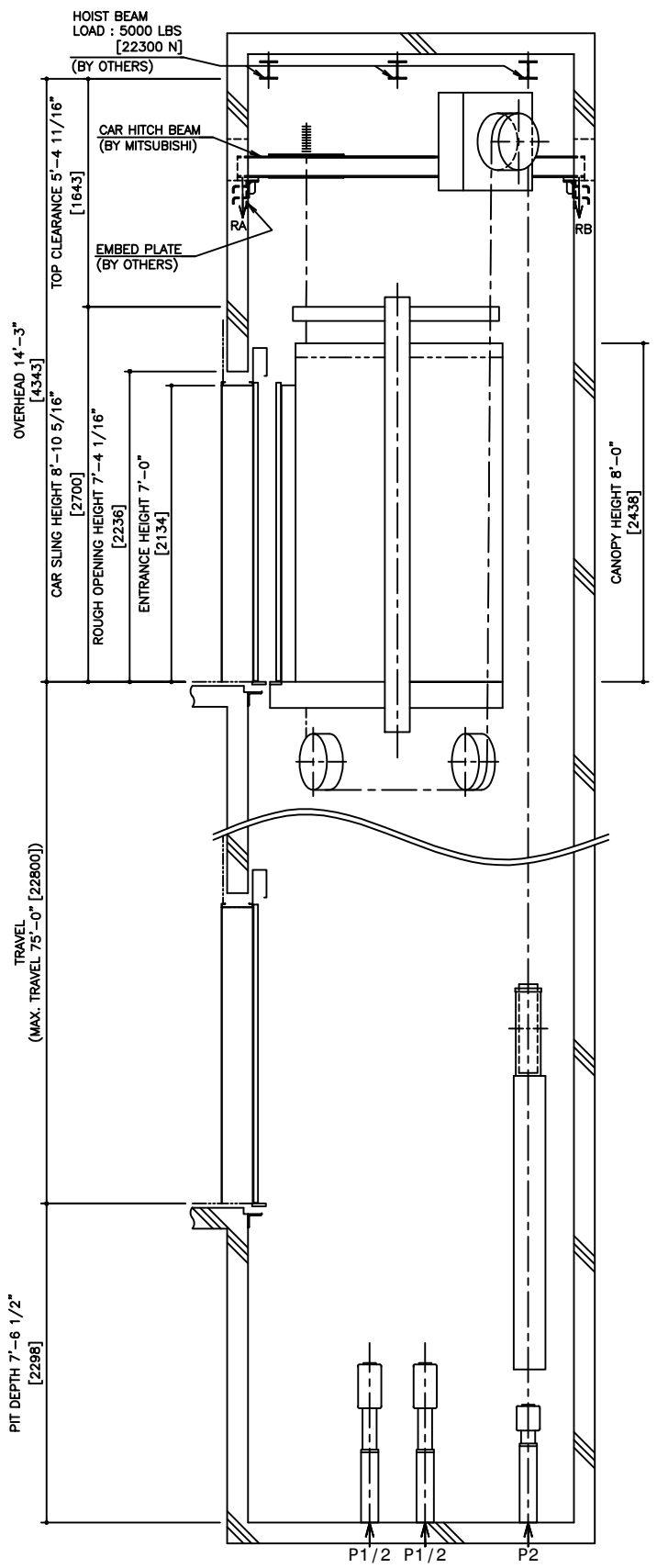


HOISTWAY PLAN WITH CWT SAFETY

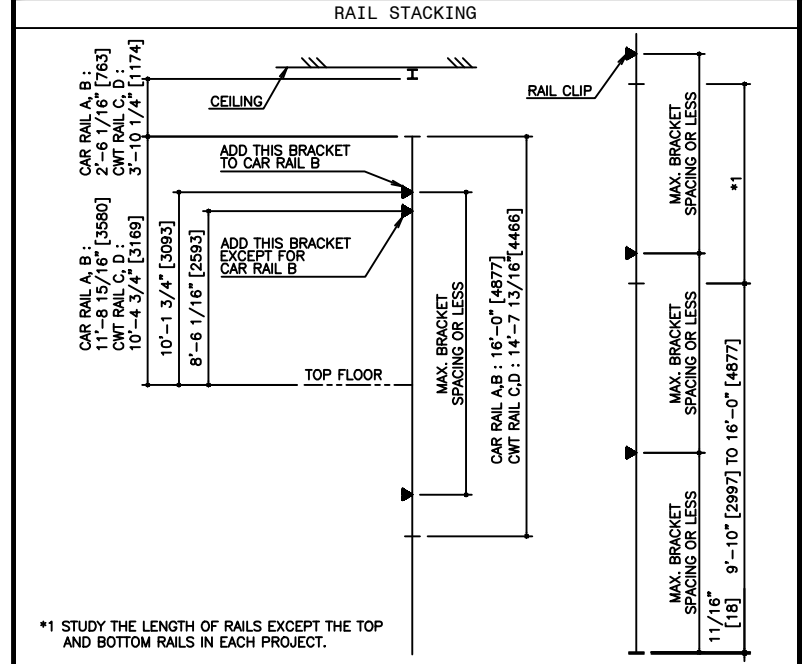


PIT PLAN WITH CWT SAFETY



HOISTWAY SECTION WITH CWT SAFETY

SPECIFICATIONS			
SERIES	DIAMOND TRAC		
LOAD	3000 LBS [1350 kg]		
SPEED	200 FPM [60 m/min]		
REGULATION / CODE	ASME A17.1S - 2005		
TRAVEL	MAX. TRAVEL : 75'-0" [22.8 m]		
DOOR TYPE	SS		
GUIDE RAIL	CAR	ZONE 0 TO 2	T127-1/B
		ZONE 3 & 4	T127-2/B
CWT		ZONE 0 TO 2	T127-1/B
		ZONE 3 & 4	T127-2/B
CWT SAFETY	APPLIED		



SEISMIC ZONE (RAIL SIZE)	ZONE 0 TO 2 (T127-1/B)		ZONE 3 & 4 (T127-2/B)	
	CAR	CWT	CAR	CWT
RAIL BRACKET SPACING	13'-9 3/8" [4200]	13'-11 5/16" [4250]	12'-11 11/16" [3700]	12'-1 11/16" [3700]

SEISMIC ZONE (RAIL SIZE)	RAIL REACTION LOAD			
	CAR RAIL A, B		CWT RAIL C, D	
	F1X	F1Y	F1X	F1Y
ZONE 0 TO 2 (T127-1/B)	1400 LBS [6000 N]	700 LBS [3000 N]	1500 LBS [6500 N]	800 LBS [3300 N]
ZONE 3 & 4 (T127-2/B)	2700 LBS [11900 N]	1400 LBS [6000 N]	3000 LBS [13000 N]	1500 LBS [6500 N]

CAR HITCH BEAM LOAD			
STATIC LOAD		DYNAMIC LOAD	
RA	RB	RA	RB
3900 LBS [17000 N]	1200 LBS [5000 N]	7700 LBS [34000 N]	2100 LBS [9000 N]

SEISMIC ZONE (RAIL SIZE)	RAIL REACTION LOAD				BUFFER REACTION LOAD	
	R1	R2	R3	R4	P1	P2
	ZONE 0 TO 2 (T127-1/B)	11000 LBS [49000 N]	10400 LBS [47000 N]	10000 LBS [45000 N]	9400 LBS [42000 N]	36200 LBS [161000 N]
ZONE 3 & 4 (T127-2/B)	11400 LBS [51000 N]	10800 LBS [48000 N]	10400 LBS [47000 N]	9800 LBS [44000 N]		

POWER FEEDER DATA 1CAR									
MOTOR	STANDARD VOLTAGE 208V				STANDARD VOLTAGE 480V				POWER SUPPLY CAPACITY [kVA]
	CURRENT [A]	FLU [A]	FLAcc [A]	BREAKER IN CONTROL PANEL [A]	CURRENT [A]	FLU [A]	FLAcc [A]	BREAKER IN CONTROL PANEL [A]	
[HP] [kW]	11.9 [8.9]	40 [40]	69 [69]	50 [50]	18 [18]	30 [30]	30 [30]	9 [9]	

POWER CURRENT CORRESPONDING TO LOCAL SUPPLY VOLTAGE (FLU or FLAcc) [A]
 = EACH CURRENT (FLU or FLAcc)[A] x STANDARD VOLTAGE (E1 or E2)[V] / LOCAL SUPPLY VOLTAGE (E) [V]

DISCLAIMER:
 THESE CAD DRAWINGS SHOULD BE USED FOR REFERENCE ONLY. MEUS DISCLAIMS ALL RESPONSIBILITY FOR ANY REPRODUCTION, MODIFICATION, DISTRIBUTION OR INTEGRATION OF THESE CAD DRAWINGS INTO OTHER ARCHITECTURAL AND STRUCTURAL DRAWINGS. MEUS MARKETS NO WARRANTIES OF ANY KIND WITH RESPECT TO THE ACCURACY OR COMPLETENESS OF THESE CAD SCHEMATIC DRAWINGS FOR ANY PURPOSE. MEUS HEREBY EXPRESSLY DISCLAIMS ALL WARRANTIES, EXPRESSED OR IMPLIED, INCLUDING THE IMPLIED WARRANTIES OF MERCHANTABILITY AND FITNESS FOR A PARTICULAR PURPOSE.
 Copyright (c) 2005 Mitsubishi Electric & Electronic USA, Inc. All rights reserved.

NOTE :
 WHEN THE CANOPY HEIGHT IS CHANGED FROM THE DIMENSION ON THIS DRAWING, OVERHEAD AND THE BRACKET SPAN FOR UPPER RAILS SHALL BE CHANGED AS WELL.

NO.	DATE	BY	REVISIONS
-	02/13/07	-	CREATED DRAWING

PROJECT:	-
ELEV. NO.:	-
DWG. TITLE:	-
ADMIN. NO.:	-
DWG. NO.:	EZ-B-0035
REV.	



SCALE : 1/50

NOT TO BE USED FOR CONSTRUCTION