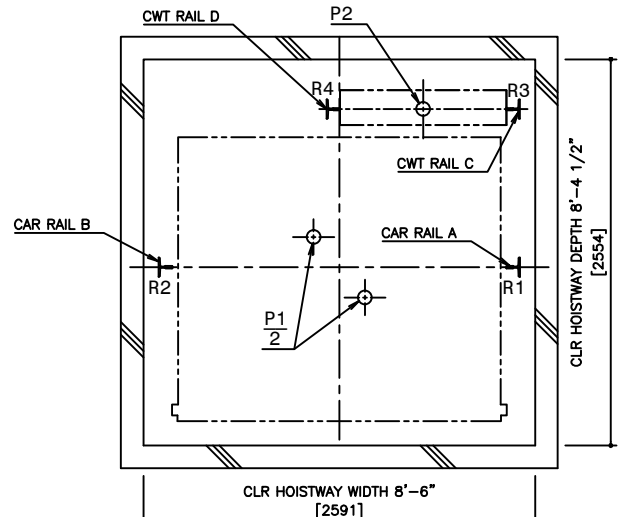
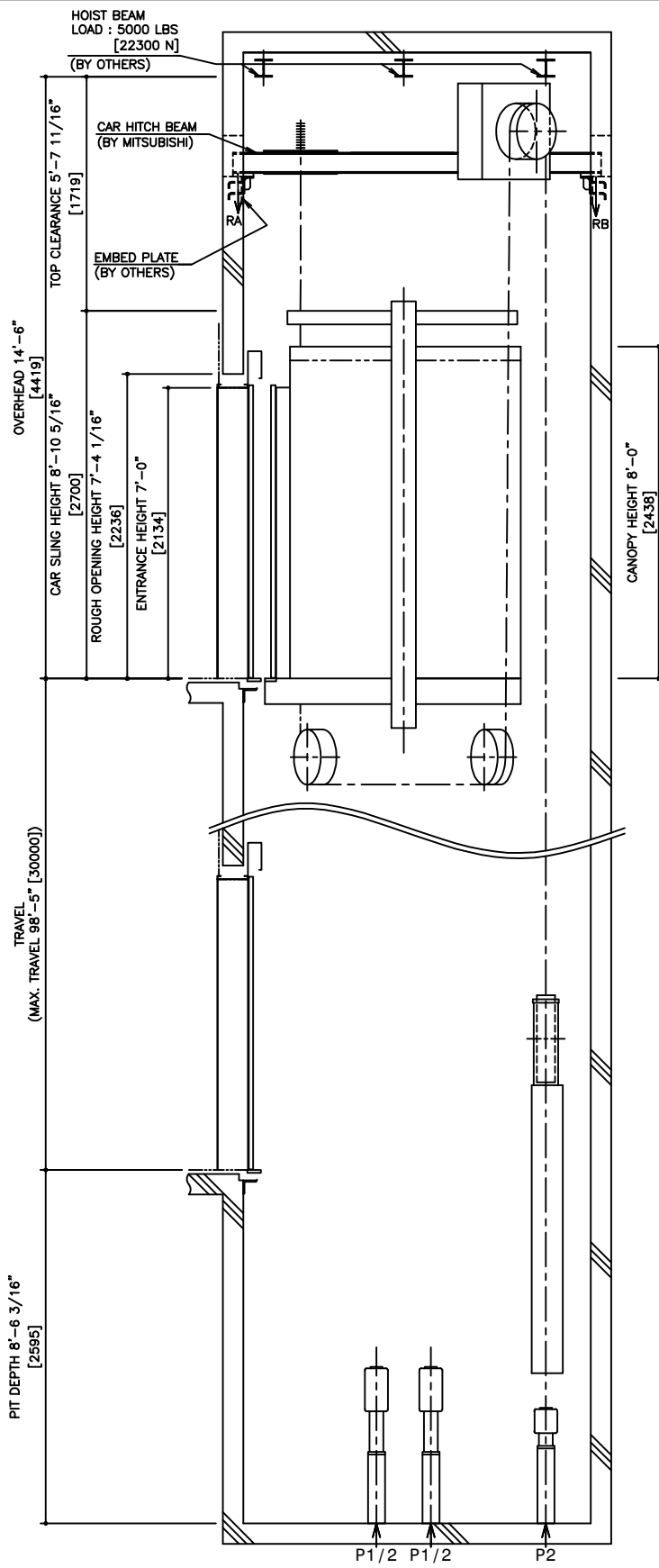


HOISTWAY PLAN WITH CWT SAFETY

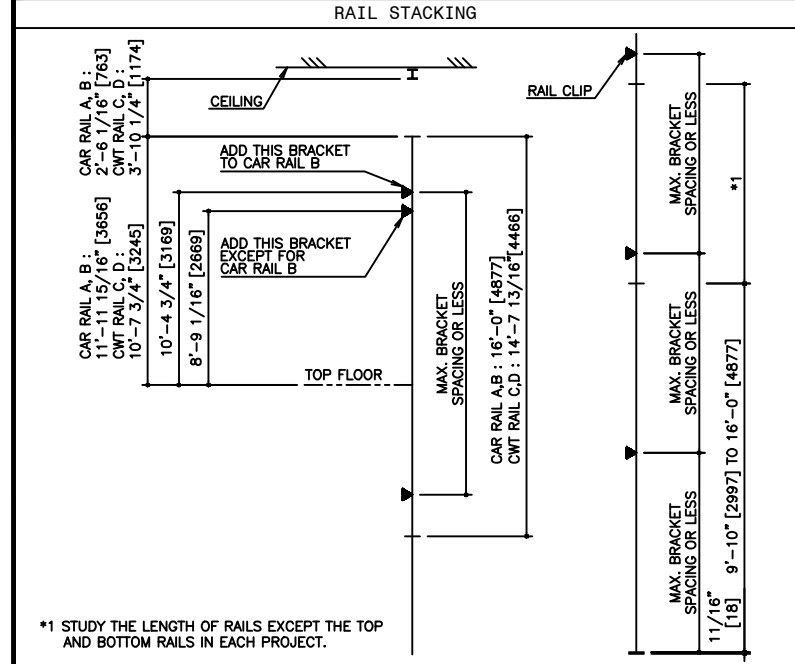


PIT PLAN WITH CWT SAFETY



HOISTWAY SECTION WITH CWT SAFETY

SPECIFICATIONS		
SERIES	DIAMOND TRAC	
LOAD	3500 LBS [1600 kg]	
SPEED	350 FPM [105 m/min]	
REGULATION / CODE	ASME A17.1S - 2005	
TRAVEL	MAX. TRAVEL : 98'-5" [30 m]	
DOOR TYPE	CO	
GUIDE RAIL	CAR	ZONE 0 TO 2 T127-1/B
	CWT	ZONE 3 & 4 T127-2/B
CWT SAFETY	APPLIED	



SEISMIC ZONE (RAIL SIZE)	ZONE 0 TO 2 (T127-1/B)		ZONE 3 & 4 (T127-2/B)	
	CAR	CWT	CAR	CWT
RAIL BRACKET SPACING	12'-11 1/2" [3850]	13'-5 7/16" [4100]	11'-9 3/4" [3600]	11'-9 3/4" [3600]

SEISMIC ZONE (RAIL SIZE)	RAIL REACTION LOAD			
	CAR RAIL A, B		CWT RAIL C, D	
	F1X	F1Y	F1X	F1Y
ZONE 0 TO 2 (T127-1/B)	1500 LBS [6600 N]	800 LBS [3300 N]	1700 LBS [7200 N]	900 LBS [3600 N]
ZONE 3 & 4 (T127-2/B)	3000 LBS [13100 N]	1500 LBS [6600 N]	3300 LBS [14300 N]	1700 LBS [7200 N]

CAR HITCH BEAM LOAD			
STATIC LOAD		DYNAMIC LOAD	
RA	RB	RA	RB
4300 LBS [19000 N]	1200 LBS [5000 N]	8400 LBS [38000 N]	2300 LBS [10000 N]

SEISMIC ZONE (RAIL SIZE)	RAIL REACTION LOAD				BUFFER REACTION LOAD	
	R1	R2	R3	R4	P1	P2
	ZONE 0 TO 2 (T127-1/B)	11900 LBS [53000 N]	11300 LBS [51000 N]	10700 LBS [48000 N]	9800 LBS [44000 N]	41000 LBS [182000 N]
ZONE 3 & 4 (T127-2/B)	12300 LBS [55000 N]	11700 LBS [52000 N]	11100 LBS [50000 N]	10200 LBS [45000 N]		

POWER FEEDER DATA 1CAR									
MOTOR	STANDARD VOLTAGE 208V				STANDARD VOLTAGE 480V				POWER SUPPLY CAPACITY [kVA]
	CURRENT		BREAKER IN CONTROL PANEL [A]		CURRENT		BREAKER IN CONTROL PANEL [A]		
[HP]	[kW]	FLU [A]	FLAcc [A]	FLU [A]	FLAcc [A]	FLU [A]	FLAcc [A]	[kVA]	HEAT EMISSION [BTU/h]
24.1	18.0	78	138	100	34	60	40	17	3070 900 7000 2050

NO.	DATE	BY	REVISIONS
-	02/13/07	-	CREATED DRAWING

PROJECT: -
 ELEV. NO.: -
 DWG. TITLE: -
 ADMIN. NO.: -
 DWG. NO.: EZ-B-0047
 REV.:

MITSUBISHI
 ELEVATORS & ESCALATORS

DIAMOND TRAC

DISCLAIMER:
 THESE CAD DRAWINGS SHOULD BE USED FOR REFERENCE ONLY. MEUS DISCLAIMS ALL RESPONSIBILITY FOR ANY REPRODUCTION, MODIFICATION, DISTRIBUTION OR INTEGRATION OF THESE CAD DRAWINGS INTO OTHER ARCHITECTURAL AND STRUCTURAL DRAWINGS. MEUS MARKETS NO WARRANTIES OF ANY KIND WITH RESPECT TO THE ACCURACY OR COMPLETENESS OF THESE CAD SCHEMATIC DRAWINGS FOR ANY PURPOSE. MEUS HEREBY EXPRESSLY DISCLAIMS ALL WARRANTIES, EXPRESSED OR IMPLIED, INCLUDING THE IMPLIED WARRANTIES OF MERCHANTABILITY AND FITNESS FOR A PARTICULAR PURPOSE.

Copyright (c) 2005 Mitsubishi Electric & Electronic USA, Inc. All rights reserved.

NOTE :
 WHEN THE CANOPY HEIGHT IS CHANGED FROM THE DIMENSION ON THIS DRAWING, OVERHEAD AND THE BRACKET SPAN FOR UPPER RAILS SHALL BE CHANGED AS WELL.

SCALE : 1/50

NOT TO BE USED FOR CONSTRUCTION