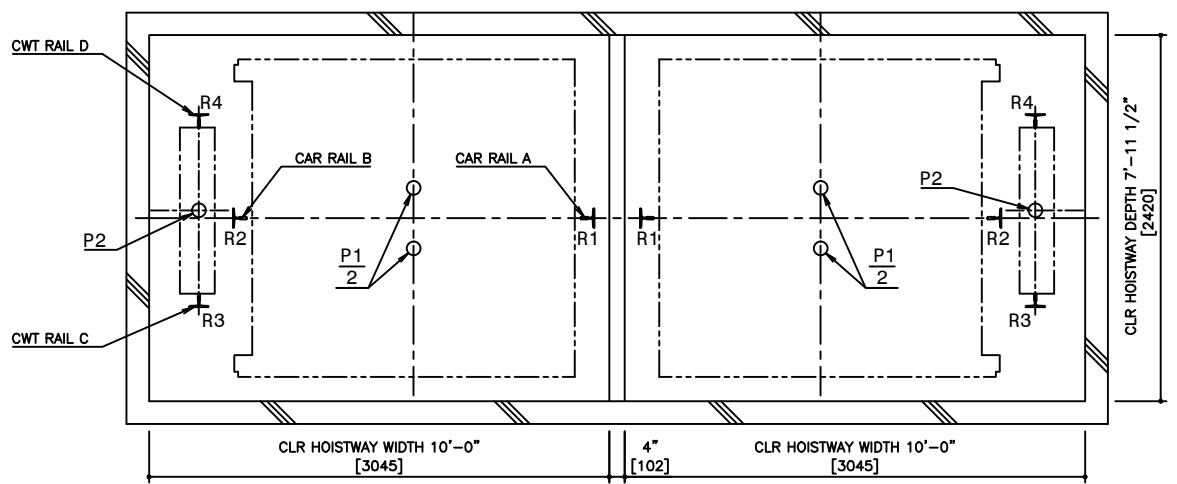
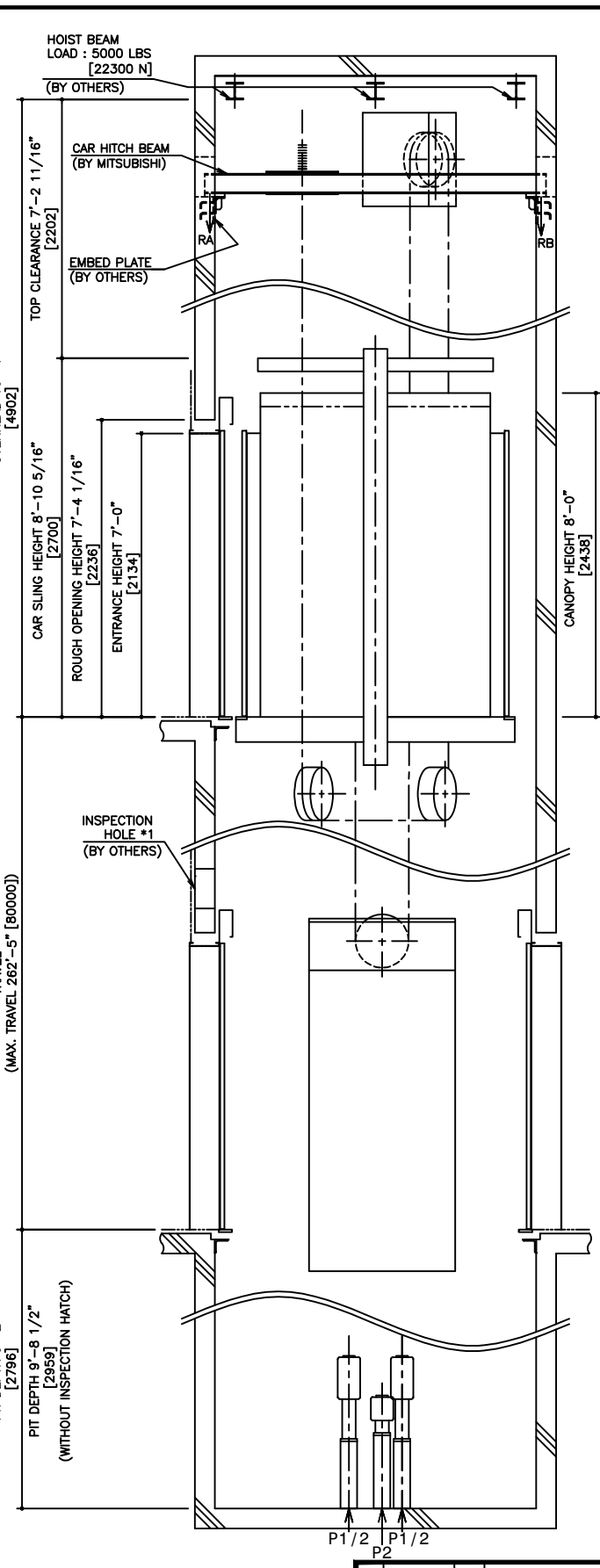


HOISTWAY PLAN WITH CWT SAFETY

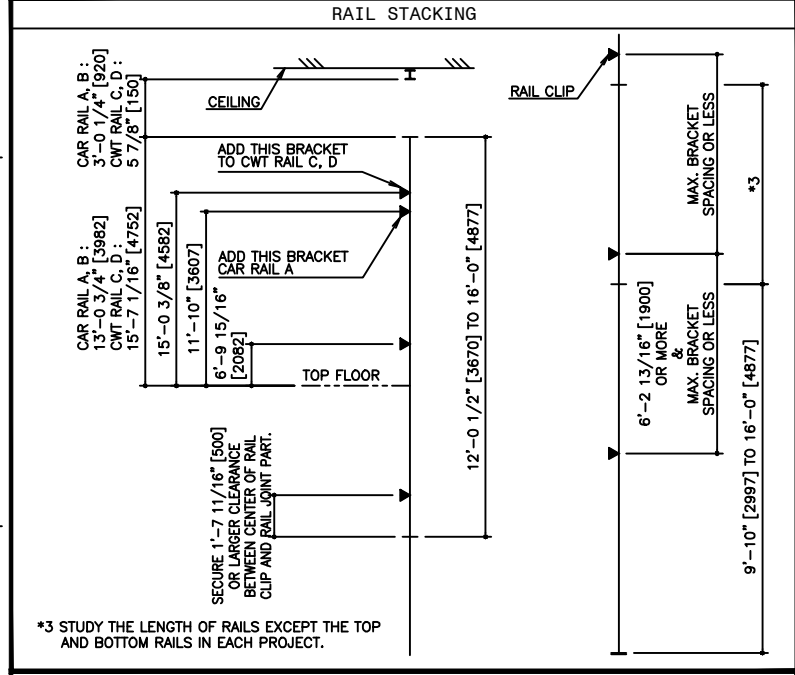


PIT PLAN WITH CWT SAFETY



HOISTWAY SECTION WITH CWT SAFETY

| SPECIFICATIONS    |                              |             |          |
|-------------------|------------------------------|-------------|----------|
| SERIES            | DIAMOND TRAC                 |             |          |
| LOAD              | 3500 LBS [1588 kg]           |             |          |
| SPEED             | 500 FPM [150 m/min]          |             |          |
| REGULATION / CODE | ASME A17.1 - 2010            |             |          |
| TRAVEL            | MAX. TRAVEL : 262'-5" [80 m] |             |          |
| DOOR TYPE         | SS                           |             |          |
| GUIDE RAIL        | CAR                          | ZONE 0 TO 2 | T127-1/B |
|                   | CWT                          | ZONE 3 & 4  | T127-2/B |
| CWT SAFETY        | CAR                          | ZONE 0 TO 2 | T127-1/B |
|                   | CWT                          | ZONE 3 & 4  | T127-2/B |
| APPLIED           |                              |             |          |



| RAIL BRACKET SPACING     |                        |                    |                       |                     |
|--------------------------|------------------------|--------------------|-----------------------|---------------------|
| SEISMIC ZONE (RAIL SIZE) | ZONE 0 TO 2 (T127-1/B) |                    | ZONE 3 & 4 (T127-2/B) |                     |
|                          | CAR                    | CWT                | CAR                   | CWT                 |
| RAIL BRACKET SPACING     | 13'-1 7/16" [4000]     | 13'-1 7/16" [4000] | 11'-9 11/16" [3600]   | 11'-9 11/16" [3600] |

| RAIL REACTION LOAD       |                    |                   |                    |                   |                  |
|--------------------------|--------------------|-------------------|--------------------|-------------------|------------------|
| SEISMIC ZONE (RAIL SIZE) | CAR RAIL A, B      |                   | CWT RAIL C, D      |                   | RAIL LOAD DETAIL |
|                          | F1X                | F1Y               | F1X                | F1Y               |                  |
| ZONE 0 TO 2 (T127-1/B)   | 1500 LBS [6500 N]  | 800 LBS [3400 N]  | 1600 LBS [7100 N]  | 800 LBS [3600 N]  |                  |
| ZONE 3 & 4 (T127-2/B)    | 3000 LBS [13000 N] | 1500 LBS [6500 N] | 3200 LBS [14200 N] | 1600 LBS [7100 N] |                  |

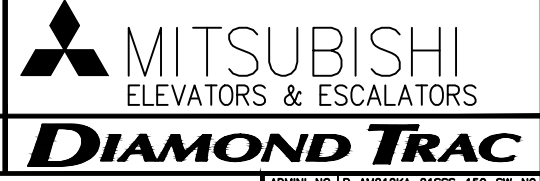
| CAR HITCH BEAM LOAD |                   |                    |                    |
|---------------------|-------------------|--------------------|--------------------|
| STATIC LOAD         |                   | DYNAMIC LOAD       |                    |
| RA                  | RB                | RA                 | RB                 |
| 4100 LBS [18000 N]  | 1600 LBS [7000 N] | 7900 LBS [35000 N] | 3200 LBS [14000 N] |

| SEISMIC ZONE (RAIL SIZE) | RAIL REACTION LOAD  |                     |                     |                     | BUFFER REACTION LOAD |                      |
|--------------------------|---------------------|---------------------|---------------------|---------------------|----------------------|----------------------|
|                          | R1                  | R2                  | R3                  | R4                  | P1                   | P2                   |
| ZONE 0 TO 2 (T127-1/B)   | 14000 LBS [62000 N] | 15600 LBS [69000 N] | 11300 LBS [50000 N] | 12600 LBS [56000 N] | 41400 LBS [185000 N] | 34100 LBS [152000 N] |
| ZONE 3 & 4 (T127-2/B)    | 15100 LBS [67000 N] | 16700 LBS [74000 N] | 12200 LBS [54000 N] | 13500 LBS [60000 N] |                      |                      |

| POWER FEEDER DATA 1CAR |                       |                          |           |         |                          |      |                       |                                |               |                    |       |      |
|------------------------|-----------------------|--------------------------|-----------|---------|--------------------------|------|-----------------------|--------------------------------|---------------|--------------------|-------|------|
| MOTOR                  | STANDARD VOLTAGE 208V |                          |           |         | STANDARD VOLTAGE 480V    |      |                       |                                | HEAT EMISSION |                    |       |      |
|                        | CURRENT               | BREAKER IN CONTROL PANEL |           | CURRENT | BREAKER IN CONTROL PANEL |      | POWER SUPPLY CAPACITY | HOISTWAY (EXCEPT CAR LIGHTING) |               | CONTROL PANEL ROOM |       |      |
| [HP]                   | [kW]                  | FLU [A]                  | FLAcc [A] | FLU [A] | FLAcc [A]                | [A]  | [kVA]                 | [BTU/h]                        | [W]           | [BTU/h]            | [W]   |      |
| 33.5                   | 25                    | 110.0                    | 195.7     | 125     | 47.7                     | 84.9 | 60                    | 24                             | 4440          | 1300               | 12450 | 3650 |

| NO. |         | DATE | BY | REVISIONS       |
|-----|---------|------|----|-----------------|
| -   | 8/12/15 | -    | -  | CREATED DRAWING |

|             |           |
|-------------|-----------|
| PROJECT:    | -         |
| ELEV. NO.:  | -         |
| DWG. TITLE: | -         |
| ADMIN. NO.: | -         |
| DWG. NO.:   | EZ-B-0264 |
| REV.        |           |



**DISCLAIMER:**  
 THESE CAD DRAWINGS SHOULD BE USED FOR REFERENCE ONLY. MEUS DISCLAIMS ALL RESPONSIBILITY FOR ANY REPRODUCTION, MODIFICATION, DISTRIBUTION OR INTEGRATION OF THESE CAD DRAWINGS INTO OTHER ARCHITECTURAL AND STRUCTURAL DRAWINGS. MEUS MARKETS NO WARRANTIES OF ANY KIND WITH RESPECT TO THE ACCURACY OR COMPLETENESS OF THESE CAD SCHEMATIC DRAWINGS FOR ANY PURPOSE. MEUS HEREBY EXPRESSLY DISCLAIMS ALL WARRANTIES, EXPRESSED OR IMPLIED, INCLUDING THE IMPLIED WARRANTIES OF MERCHANTABILITY AND FITNESS FOR A PARTICULAR PURPOSE.  
 Copyright (c) 2005 Mitsubishi Electric & Electronic USA, Inc. All rights reserved.

NOTE :  
 -WHEN THE CANOPY HEIGHT IS CHANGED FROM THE DIMENSION ON THIS DRAWING, OVERHEAD AND THE BRACKET SPAN FOR UPPER RAILS SHALL BE CHANGED AS WELL.  
 -IF ASME A17.1-2004 APPLIES, ADD 2"[51] TO OVERHEAD AND TOP CLEARANCE.

\*1,\*2 : AS SHOWN IN THE FIGURE ABOVE, AN INSPECTION HATCH FOR USE IN THE MAINTENANCE OF THE CAR DOOR OPERATOR SHALL BE PROVIDED ABOVE THE ENTRANCE ON THE BOTTOM FLOOR, IF THE LANDING IS THE ONLY ONE IN THAT SIDE. HOWEVER, THIS INSPECTION HATCH WILL BE UNNECESSARY, IF THE PIT DEPTH CAN BE DEEPENED BY 0'-6 1/2"[165].

SCALE : 1/50

NOT TO BE USED FOR CONSTRUCTION