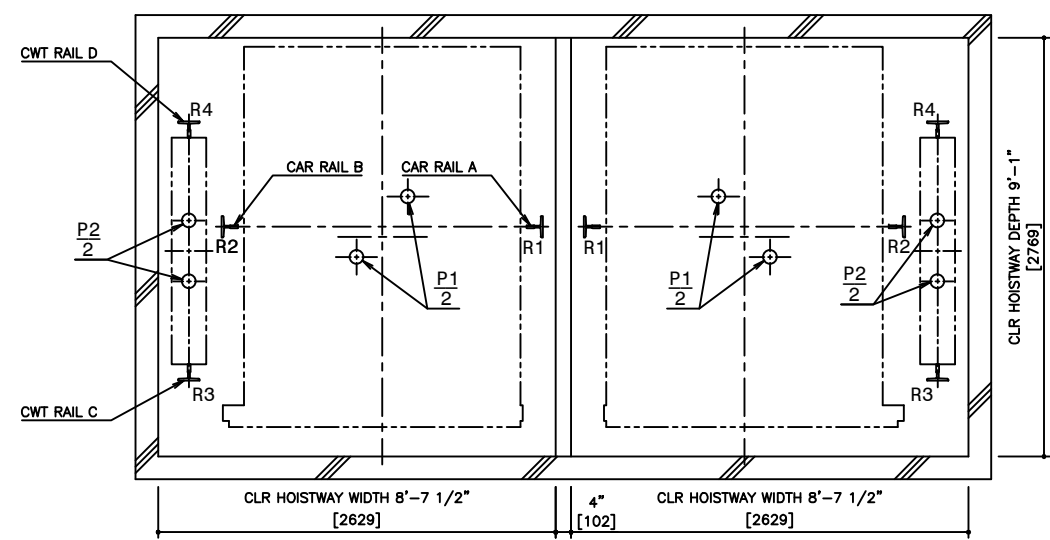
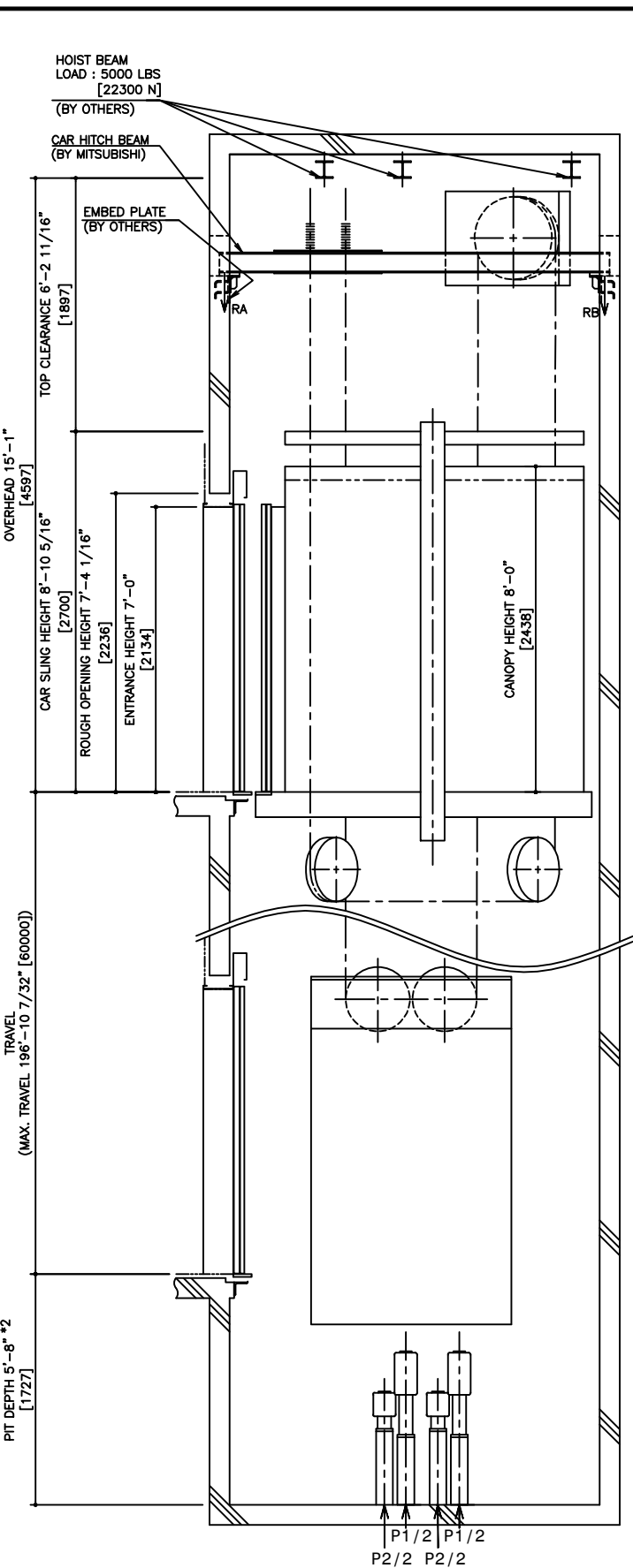


HOISTWAY PLAN
WITHOUT CWT SAFETY



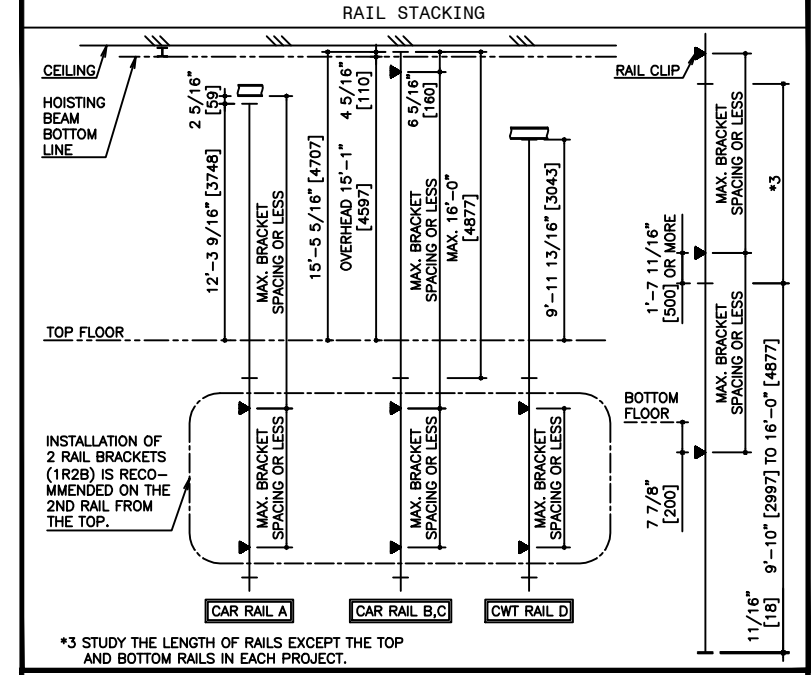
PIT PLAN
WITHOUT CWT SAFETY



HOISTWAY SECTION
WITHOUT CWT SAFETY

SPECIFICATIONS

SERIES	DIAMOND TRAC
LOAD	4000 LBS [1800 kg]
SPEED	200 FPM [60 m/min]
REGULATION / CODE	ASME A17.1S - 2005
TRAVEL	MAX. TRAVEL : 196'-10 7/32" [60000]
DOOR TYPE	2S
GUIDE RAIL	CAR T127-1/B, T127-2/B, T140-1/B CWT T127-1/B, T127-2/B, T140-1/B
CWT SAFETY	NOT APPLIED



RAIL BRACKET SPACING

SEISMIC ZONE	ZONE 0 TO 2			ZONE 3 & 4		
RAIL SIZE	T127-1/B	T127-2/B	T140-1/B	T127-1/B	T127-2/B	T140-1/B
RAIL BRACKET SPACING	CAR 10'-9 15/16" [3300], CWT 11'-3 13/16" [3490]	CAR 11'-3 7/16" [4000], CWT 11'-3 7/16" [4300]	CAR 14'-1 5/16" [5000], CWT 16'-4 7/8" [5000]	CAR 7'-2 5/8" [2200], CWT 7'-10 1/2" [2400]	CAR 10'-0 1/8" [3050], CWT 10'-7 15/16" [3250]	CAR 13'-5 7/16" [4050], CWT 13'-5 7/16" [4100]

RAIL REACTION LOAD

SEISMIC ZONE	CAR RAIL A, B		CWT RAIL C, D	
	FIX	FIY	FIX	FIY
ZONE 0 TO 2	1800 LBS [8100 N]	900 LBS [4100 N]	2000 LBS [8900 N]	1000 LBS [4500 N]
ZONE 3 & 4	3500 LBS [15600 N]	1800 LBS [8100 N]	4000 LBS [17800 N]	2000 LBS [8900 N]

CAR HITCH BEAM LOAD

STATIC LOAD		DYNAMIC LOAD	
RA	RB	RA	RB
5300 LBS [24000 N]	1500 LBS [7000 N]	10800 LBS [48000 N]	2900 LBS [13000 N]

PIT REACTION LOAD

SEISMIC ZONE (RAIL SIZE)	RAIL REACTION LOAD				BUFFER REACTION LOAD	
	R1	R2	R3	R4	P1	P2
T127-1/B	14800 LBS [65600 N]	18300 LBS [81100 N]	3800 LBS [16800 N]	14600 LBS [64700 N]	47200 LBS [210000 N]	39400 LBS [175000 N]
T127-2/B	15500 LBS [68900 N]	19000 LBS [84300 N]	4600 LBS [20100 N]	15300 LBS [68000 N]		
T140-1/B	16300 LBS [72100 N]	19700 LBS [87500 N]	5300 LBS [23300 N]	16100 LBS [71200 N]		

POWER FEEDER DATA 1CAR

MOTOR	STANDARD VOLTAGE 208V				STANDARD VOLTAGE 480V				POWER SUPPLY CAPACITY [kVA]	HEAT EMISSION			
	CURRENT [A]	FLU [A]	FLAcc [A]	BREAKER IN CONTROL PANEL [A]	CURRENT [A]	FLU [A]	FLAcc [A]	BREAKER IN CONTROL PANEL [A]		HOISTWAY (EXCEPT CAR LIGHTING) [BTU/H]	CONTROL ROOM [W]	CONTROL PANEL [BTU/H]	ROOM [W]
16.1 [HP]	12 [kW]	52 [A]	91 [A]	75 [A]	23 [A]	40 [A]	30 [A]	12 [kVA]	2390 [BTU/H]	700 [W]	4780 [BTU/H]	1400 [W]	

POWER CURRENT CORRESPONDING TO LOCAL SUPPLY VOLTAGE (FLU or FLAcc) [A]
= EACH CURRENT (FLU or FLAcc) [A] x STANDARD VOLTAGE (E1 or E2) [V]
= LOCAL SUPPLY VOLTAGE (E) [V]

DISCLAIMER:
THESE CAD DRAWINGS SHOULD BE USED FOR REFERENCE ONLY. MEUS DISCLAIMS ALL RESPONSIBILITY FOR ANY REPRODUCTION, MODIFICATION, DISTRIBUTION OR INTEGRATION OF THESE CAD DRAWINGS INTO OTHER ARCHITECTURAL AND STRUCTURAL DRAWINGS. MEUS MARKETS NO WARRANTIES OF ANY KIND WITH RESPECT TO THE ACCURACY OR COMPLETENESS OF THESE CAD SCHEMATIC DRAWINGS FOR ANY PURPOSE. MEUS HEREBY EXPRESSLY DISCLAIMS ALL WARRANTIES, EXPRESSED OR IMPLIED, INCLUDING THE IMPLIED WARRANTIES OF MERCHANTABILITY AND FITNESS FOR A PARTICULAR PURPOSE.
Copyright (c) 2005 Mitsubishi Electric & Electronic USA, Inc. All rights reserved.

NOTE :
WHEN THE CANOPY HEIGHT IS CHANGED FROM THE DIMENSION ON THIS DRAWING, OVERHEAD AND THE BRACKET SPAN FOR UPPER RAILS SHALL BE CHANGED AS WELL.

*1,*2 : AS SHOWN IN THE FIGURE ABOVE, AN INSPECTION HATCH FOR USE IN THE MAINTENANCE OF THE CAR DOOR OPERATOR SHALL BE PROVIDED ABOVE THE ENTRANCE ON THE BOTTOM FLOOR, IF THE LANDING IS THE ONLY ONE IN THAT SIDE. HOWEVER, THIS INSPECTION HATCH WILL BE UNNECESSARY, IF THE PIT DEPTH CAN BE DEEPENED BY 0'-6 1/2" [165].

REVISIONS

NO.	DATE	BY	REVISIONS
-	03/16/10	-	CREATED DRAWING

PROJECT: -
ELEV. NO.: -
DWG. TITLE: -
ADMIN. NO.: -
DWG. NO.: EZ-B-0074
REV. -

MITSUBISHI ELEVATORS & ESCALATORS

DIAMOND TRAC

ADMIN. NO | B-AM211KA-2552S-060-S0-N0

SCALE : 1/50

NOT TO BE USED FOR CONSTRUCTION