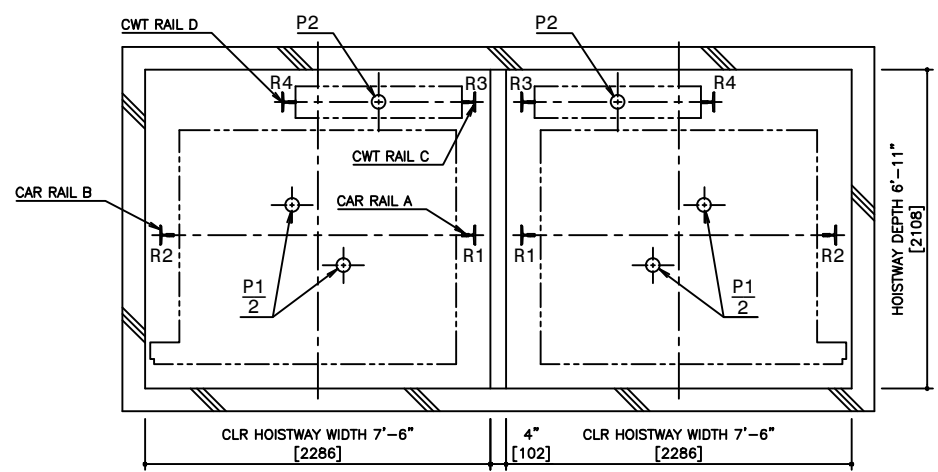
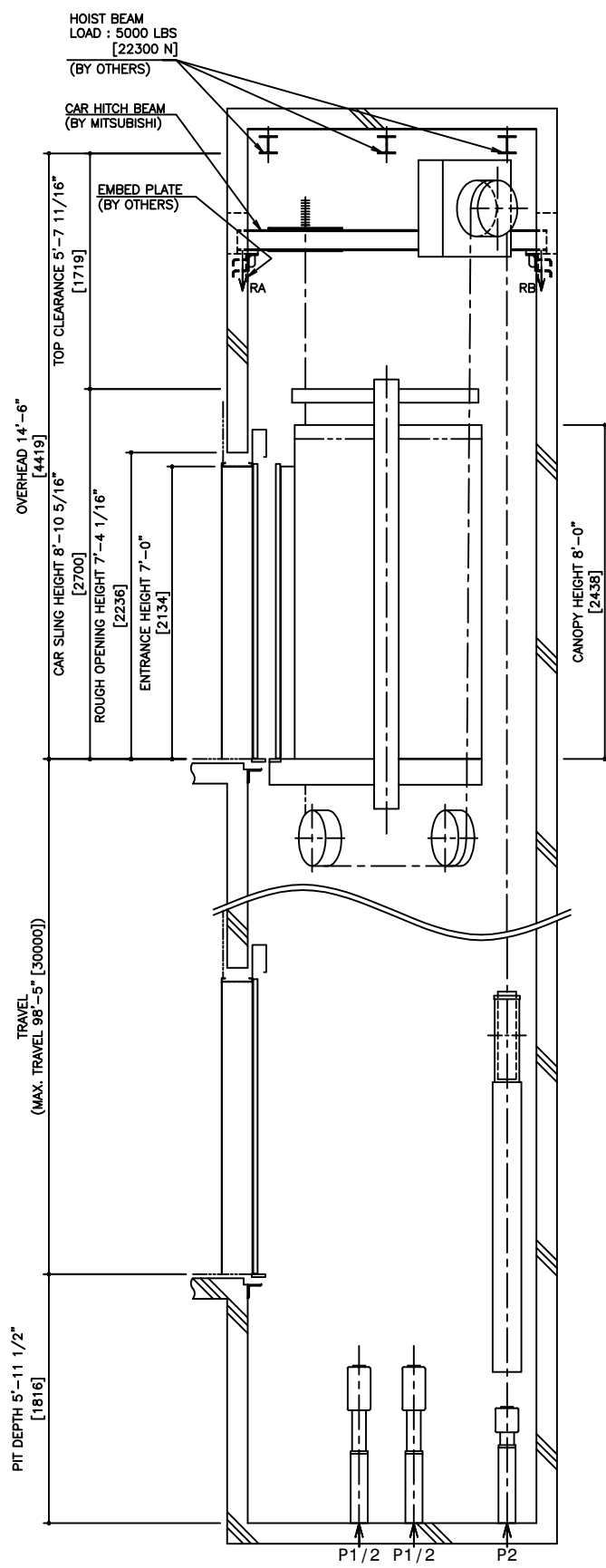


HOISTWAY PLAN  
WITHOUT CWT SAFETY

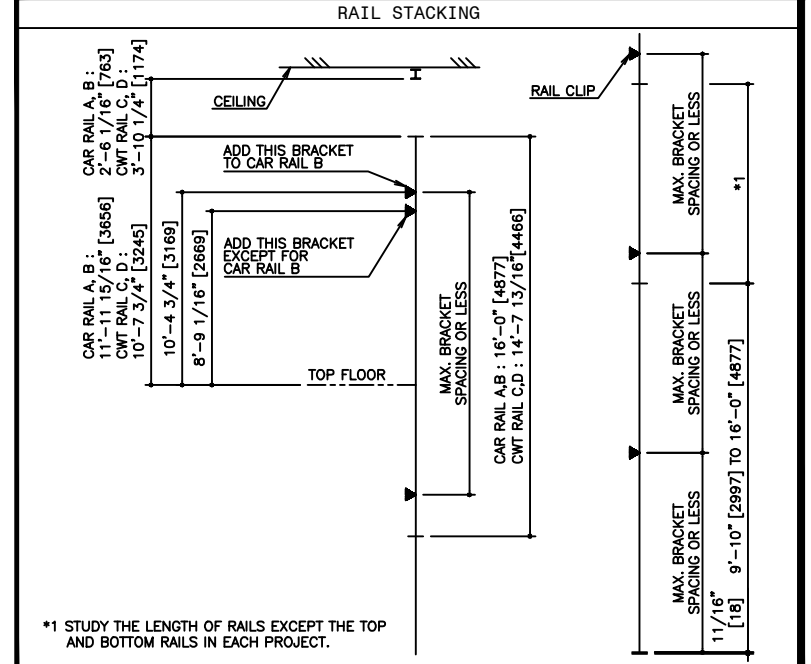


PIT PLAN  
WITHOUT CWT SAFETY



HOISTWAY SECTION  
WITHOUT CWT SAFETY

SPECIFICATIONS		
SERIES	DIAMOND TRAC	
LOAD	2000 LBS [900 kg]	
SPEED	350 FPM [105 m/min]	
REGULATION / CODE	ASME A17.1S - 2005	
TRAVEL	MAX. TRAVEL : 98'-5" [30 m]	
DOOR TYPE	SS	
GUIDE RAIL	CAR	ZONE 0 TO 2 T127-1/B ZONE 3 & 4 T127-2/B
	CWT	ZONE 0 TO 2 T127-1/B ZONE 3 & 4 T127-2/B
CWT SAFETY	NOT APPLIED	



RAIL BRACKET SPACING				
SEISMIC ZONE (RAIL SIZE)	ZONE 0 TO 2 (T127-1/B)		ZONE 3 & 4 (T127-2/B)	
	CAR	CWT	CAR	CWT
RAIL BRACKET SPACING	15'-9" [4800]	15'-3 1/16" [4650]	12'-11 1/2" [3950]	12'-9 9/16" [3900]

RAIL REACTION LOAD					
SEISMIC ZONE (RAIL SIZE)	CAR RAIL A, B		CWT RAIL C, D		RAIL LOAD DETAIL
	F1X	F1Y	F1X	F1Y	
ZONE 0 TO 2 (T127-1/B)	1200 LBS [5200 N]	800 LBS [3600 N]	1300 LBS [5600 N]	700 LBS [2800 N]	
ZONE 3 & 4 (T127-2/B)	2400 LBS [10400 N]	1200 LBS [5200 N]	2600 LBS [11200 N]	1300 LBS [5600 N]	

CAR HITCH BEAM LOAD			
STATIC LOAD		DYNAMIC LOAD	
RA	RB	RA	RB
3200 LBS [14000 N]	900 LBS [4000 N]	6300 LBS [28000 N]	1800 LBS [8000 N]

PIT REACTION LOAD						
SEISMIC ZONE (RAIL SIZE)	RAIL REACTION LOAD				BUFFER REACTION LOAD	
	R1	R2	R3	R4	P1	P2
ZONE 0 TO 2 (T127-1/B)	9300 LBS [42000 N]	8700 LBS [39000 N]	8200 LBS [37000 N]	5400 LBS [24000 N]	30600 LBS [136000 N]	26600 LBS [118000 N]
ZONE 3 & 4 (T127-2/B)	9700 LBS [43000 N]	9100 LBS [41000 N]	8600 LBS [38000 N]	5800 LBS [26000 N]		

POWER FEEDER DATA 1CAR											
MOTOR	STANDARD VOLTAGE 208V				STANDARD VOLTAGE 480V				HEAT EMISSION		
	FLU	FLAcc	BREAKER IN CONTROL PANEL [A]	CURRENT	FLU	FLAcc	BREAKER IN CONTROL PANEL [A]	CURRENT	HOISTWAY CAPACITY (EXCEPT CAR LIGHTING)	CONTROL PANEL ROOM	
[HP] [kW]	[A]	[A]	[A]	[A]	[A]	[A]	[A]	[A]	[kW]	[BTU/H] [W]	[BTU/H] [W]
13.0 9.7	46 80	80	75	20	35	30	10	1880 550	4270 1250		

POWER CURRENT CORRESPONDING TO LOCAL SUPPLY VOLTAGE (FLU or FLAcc) [A]  
 STANDARD VOLTAGE (E1 or E2) [V]  
 = EACH CURRENT (FLU or FLAcc) [A] x LOCAL SUPPLY VOLTAGE (E) [V]

**DISCLAIMER:**  
 THESE CAD DRAWINGS SHOULD BE USED FOR REFERENCE ONLY. MEUS DISCLAIMS ALL RESPONSIBILITY FOR ANY REPRODUCTION, MODIFICATION, DISTRIBUTION OR INTEGRATION OF THESE CAD DRAWINGS INTO OTHER ARCHITECTURAL AND STRUCTURAL DRAWINGS. MEUS MARKETS NO WARRANTIES OF ANY KIND WITH RESPECT TO THE ACCURACY OR COMPLETENESS OF THESE CAD SCHEMATIC DRAWINGS FOR ANY PURPOSE. MEUS HEREBY EXPRESSLY DISCLAIMS ALL WARRANTIES, EXPRESSED OR IMPLIED, INCLUDING THE IMPLIED WARRANTIES OF MERCHANTABILITY AND FITNESS FOR A PARTICULAR PURPOSE.  
 Copyright (c) 2005 Mitsubishi Electric & Electronic USA, Inc. All rights reserved.

NOTE :  
 WHEN THE CANOPY HEIGHT IS CHANGED FROM THE DIMENSION ON THIS DRAWING, OVERHEAD AND THE BRACKET SPAN FOR UPPER RAILS SHALL BE CHANGED AS WELL.

NO.	DATE	BY	REVISIONS
-	02/13/07	-	CREATED DRAWING

PROJECT: --  
 ELEV. NO.: --  
 DWG. TITLE: --  
 ADMIN. NO.: --  
 DWG. NO.: EZ-B-0006  
 REV. --

**MITSUBISHI**  
 ELEVATORS & ESCALATORS

**DIAMOND TRAC**

SCALE : 1/50

NOT TO BE USED FOR CONSTRUCTION