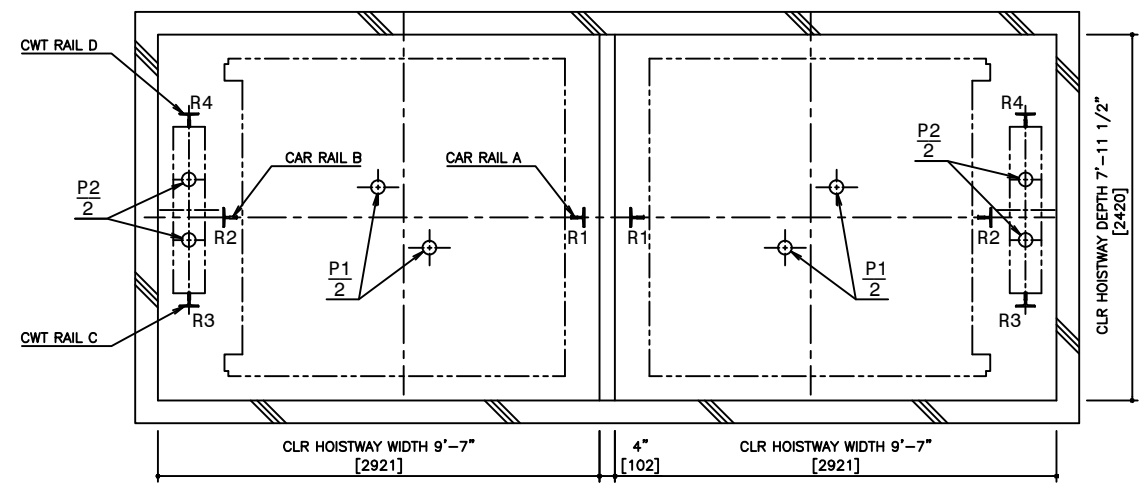
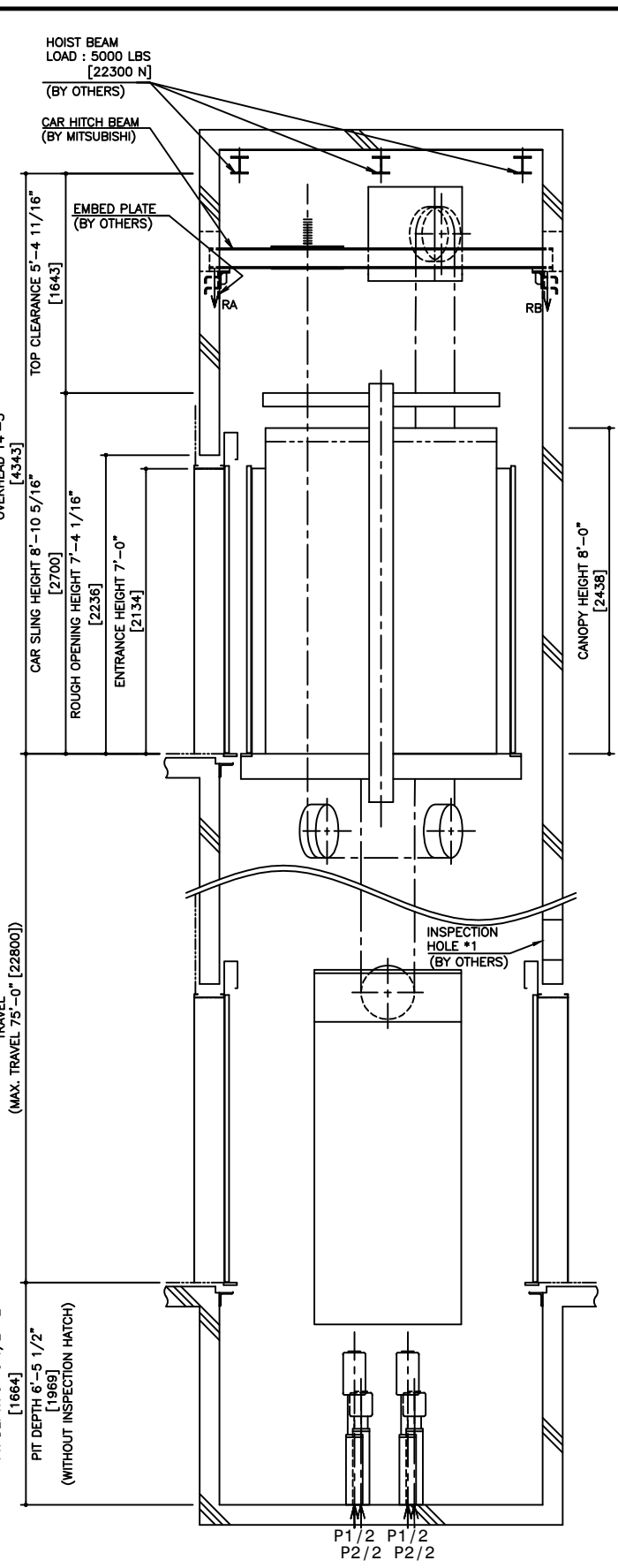


HOISTWAY PLAN  
WITHOUT CWT SAFETY



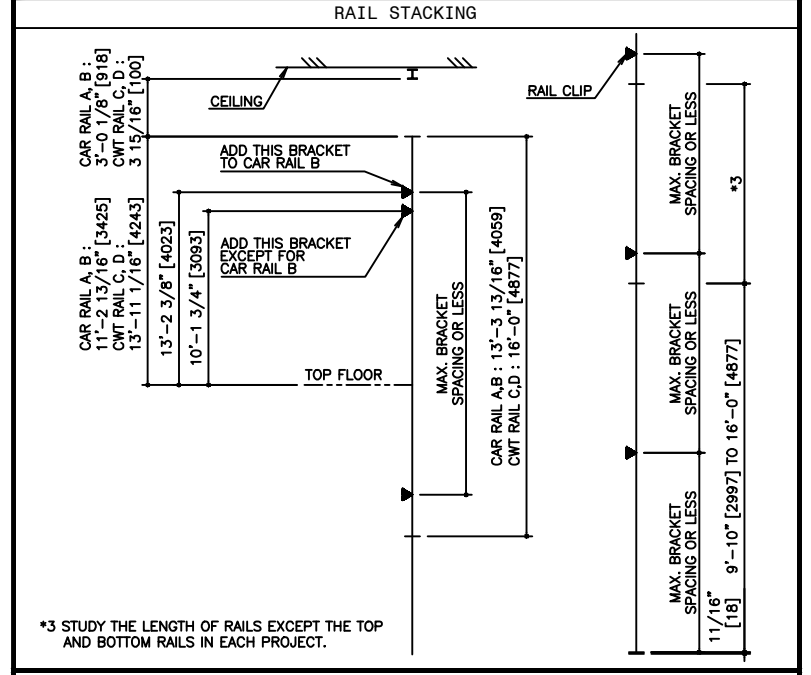
PIT PLAN  
WITHOUT CWT SAFETY



HOISTWAY SECTION  
WITHOUT CWT SAFETY

\*1,\*2 : AS SHOWN IN THE FIGURE ABOVE, AN INSPECTION HATCH FOR USE IN THE MAINTENANCE OF THE CAR DOOR OPERATOR SHALL BE PROVIDED ABOVE THE ENTRANCE ON THE BOTTOM FLOOR, IF THE LANDING IS THE ONLY ONE IN THAT SIDE. HOWEVER, THIS INSPECTION HATCH WILL BE UNNECESSARY, IF THE PIT DEPTH CAN BE DEEPENED BY 1'-0\"/>

SPECIFICATIONS		
SERIES	DIAMOND TRAC	
LOAD	3500 LBS [1600 kg]	
SPEED	200 FPM [60 m/min]	
REGULATION / CODE	ASME A17.1S - 2005	
TRAVEL	MAX. TRAVEL : 75'-0" [22.8 m]	
DOOR TYPE	SS	
GUIDE RAIL	CAR	ZONE 0 TO 2 T127-1/B
	CWT	ZONE 3 & 4 T127-2/B
CWT SAFETY	ZONE 0 TO 2	T127-1/B
	ZONE 3 & 4	T127-2/B
NOT APPLIED		



RAIL BRACKET SPACING				
SEISMIC ZONE (RAIL SIZE)	ZONE 0 TO 2 (T127-1/B)		ZONE 3 & 4 (T127-2/B)	
	CAR	CWT	CAR	CWT
RAIL BRACKET SPACING	12'-11 1/2" [3850]	14'-1 5/16" [4300]	11'-9 3/4" [3600]	11'-9 3/4" [3600]

SEISMIC ZONE (RAIL SIZE)	RAIL REACTION LOAD			
	CAR RAIL A, B		CWT RAIL C, D	
	F1X	F1Y	F1X	F1Y
ZONE 0 TO 2 (T127-1/B)	1500 LBS [6600 N]	800 LBS [3300 N]	1700 LBS [7200 N]	900 LBS [3600 N]
ZONE 3 & 4 (T127-2/B)	3000 LBS [13100 N]	1500 LBS [6600 N]	3300 LBS [14300 N]	1700 LBS [7200 N]

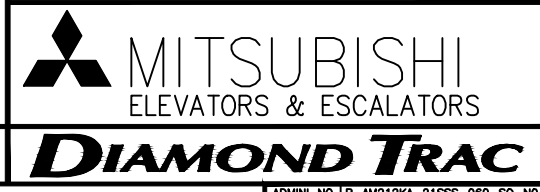
CAR HITCH BEAM LOAD			
STATIC LOAD		DYNAMIC LOAD	
RA	RB	RA	RB
3900 LBS [17000 N]	1600 LBS [7000 N]	7700 LBS [34000 N]	3000 LBS [13000 N]

SEISMIC ZONE (RAIL SIZE)	RAIL REACTION LOAD				BUFFER REACTION LOAD	
	R1	R2	R3	R4	P1	P2
ZONE 0 TO 2 (T127-1/B)	13500 LBS [60000 N]	11500 LBS [51000 N]	8800 LBS [39000 N]	3400 LBS [15000 N]	40500 LBS [180000 N]	33300 LBS [148000 N]
ZONE 3 & 4 (T127-2/B)	13800 LBS [61000 N]	11700 LBS [52000 N]	9300 LBS [41000 N]	3900 LBS [17000 N]		

POWER FEEDER DATA 1CAR									
MOTOR	STANDARD VOLTAGE 208V				STANDARD VOLTAGE 480V				HEAT EMISSION
	CURRENT		BREAKER IN CONTROL PANEL		CURRENT		BREAKER IN CONTROL PANEL		
[HP]	[kW]	FLU [A]	FLAcc [A]	[A]	[A]	FLU [A]	FLAcc [A]	[A]	[A]
13.5	9.9	46	80	75	20	35	30	10	1880 550 4270 1250

NO.		DATE		BY		REVISIONS	
-	10/01/08	-	-	-	-	CREATED DRAWING	

PROJECT:	-
ELEV. NO.:	-
DWG. TITLE:	-
ADMIN. NO.:	-
DWG. NO.:	EZ-B-0066
REV.	



**DISCLAIMER:**  
THESE CAD DRAWINGS SHOULD BE USED FOR REFERENCE ONLY. MEUS DISCLAIMS ALL RESPONSIBILITY FOR ANY REPRODUCTION, MODIFICATION, DISTRIBUTION OR INTEGRATION OF THESE CAD DRAWINGS INTO OTHER ARCHITECTURAL AND STRUCTURAL DRAWINGS. MEUS MARKETS NO WARRANTIES OF ANY KIND WITH RESPECT TO THE ACCURACY OR COMPLETENESS OF THESE CAD SCHEMATIC DRAWINGS FOR ANY PURPOSE. MEUS HEREBY EXPRESSLY DISCLAIMS ALL WARRANTIES, EXPRESSED OR IMPLIED, INCLUDING THE IMPLIED WARRANTIES OF MERCHANTABILITY AND FITNESS FOR A PARTICULAR PURPOSE.  
Copyright (c) 2005 Mitsubishi Electric & Electronic USA, Inc. All rights reserved.

NOTE : WHEN THE CANOPY HEIGHT IS CHANGED FROM THE DIMENSION ON THIS DRAWING, OVERHEAD AND THE BRACKET SPAN FOR UPPER RAILS SHALL BE CHANGED AS WELL.

SCALE : 1/50

NOT TO BE USED FOR CONSTRUCTION