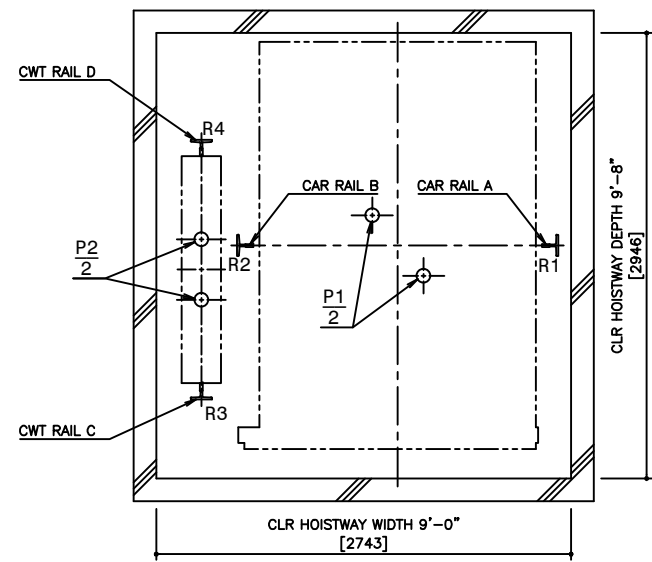
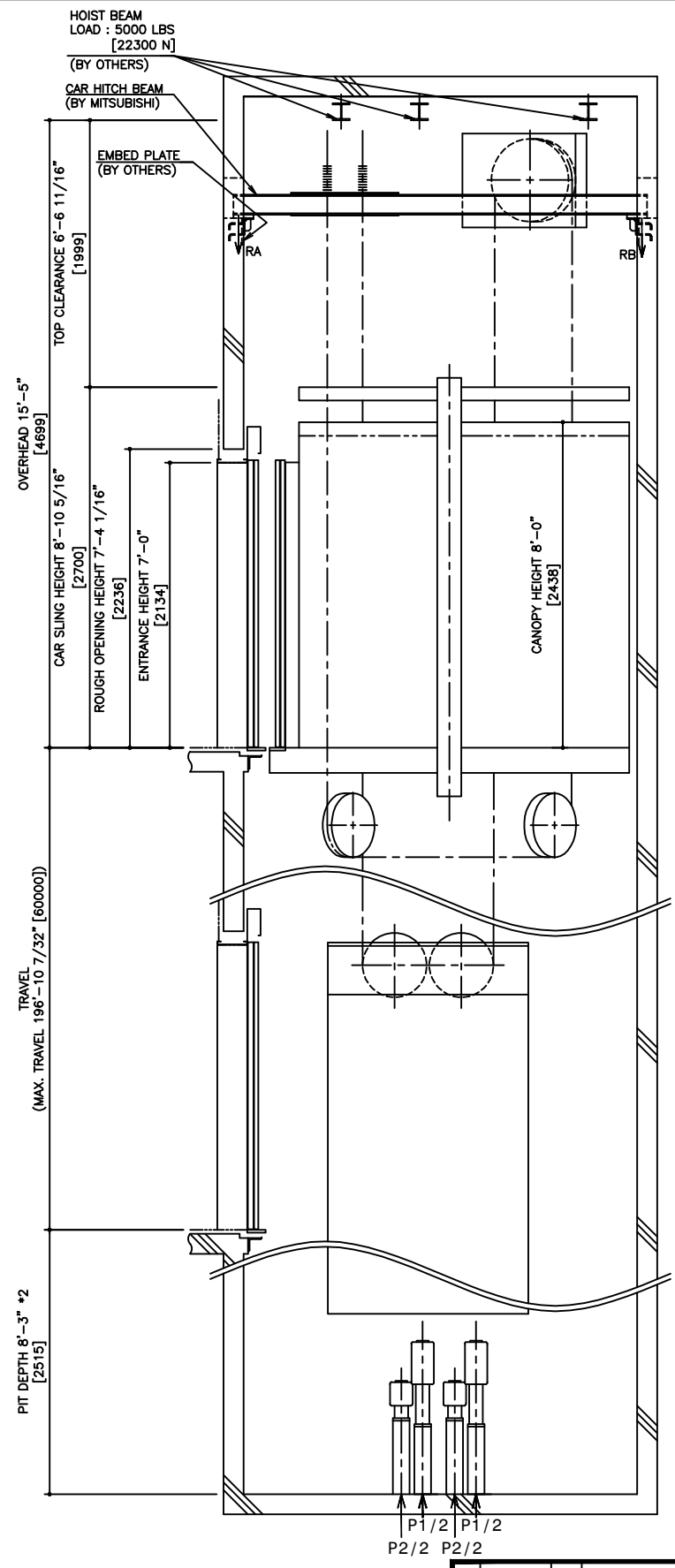


HOISTWAY PLAN WITH CWT SAFETY

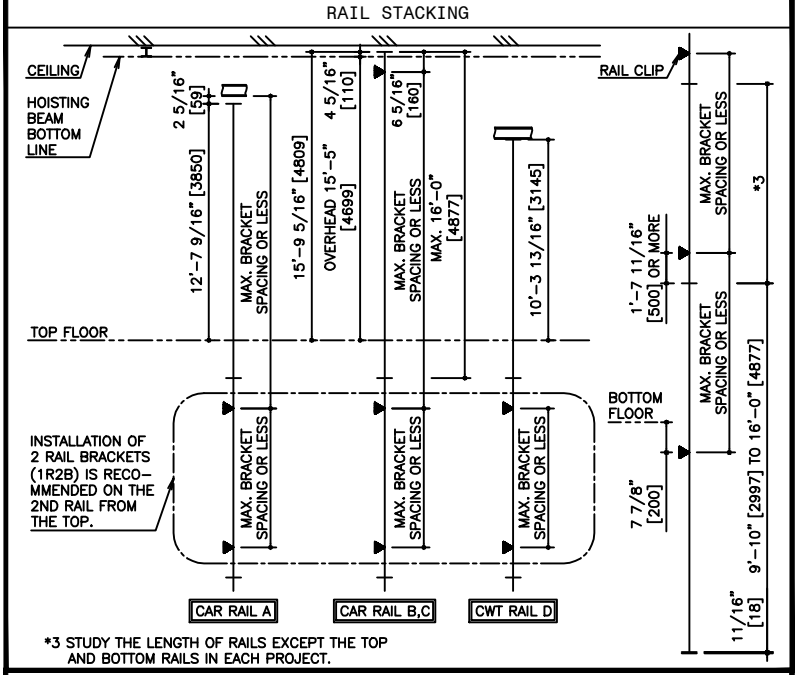


PIT PLAN WITH CWT SAFETY



HOISTWAY SECTION WITH CWT SAFETY

SPECIFICATIONS	
SERIES	DIAMOND TRAC
LOAD	4500 LBS [2000 kg]
SPEED	350 FPM [105 m/min]
REGULATION / CODE	ASME A17.1S - 2005
TRAVEL	MAX. TRAVEL : 196'-10 7/32" [60000]
DOOR TYPE	2S
GUIDE RAIL	CAR T127-1/B, T127-2/B, T140-1/B
	CWT T127-1/B, T127-2/B, T140-1/B
CWT SAFETY	APPLIED



RAIL BRACKET SPACING						
SEISMIC ZONE	ZONE 0 TO 2			ZONE 3 & 4		
RAIL SIZE	T127-1/B	T127-2/B	T140-1/B	T127-1/B	T127-2/B	T140-1/B
RAIL BRACKET SPACING	CAR 10'-4" [3150]	CWT 11'-3 13/16" [3490]	CAR 12'-11 1/2" [3900]	CAR 11'-9 3/4" [3600]	CWT 14'-11 1/8" [4550]	CAR 16'-0" [4877]

RAIL REACTION LOAD				
SEISMIC ZONE	CAR RAIL A, B		CWT RAIL C, D	
	FIX	FIY	FIX	FIY
ZONE 0 TO 2	1800 LBS [8100 N]	900 LBS [4100 N]	2000 LBS [8900 N]	1000 LBS [4500 N]
ZONE 3 & 4	3600 LBS [16100 N]	1800 LBS [8100 N]	4000 LBS [17800 N]	2000 LBS [8900 N]

CAR HITCH BEAM LOAD			
STATIC LOAD		DYNAMIC LOAD	
RA	RB	RA	RB
5400 LBS [25000 N]	1400 LBS [7000 N]	10700 LBS [48000 N]	2800 LBS [13000 N]

PIT REACTION LOAD						
SEISMIC ZONE (RAIL SIZE)	RAIL REACTION LOAD				BUFFER REACTION LOAD	
	R1	R2	R3	R4	P1	P2
T127-1/B	14800 LBS [65600 N]	18300 LBS [81100 N]	11300 LBS [50300 N]	14500 LBS [64200 N]	47900 LBS [213000 N]	38900 LBS [173000 N]
T127-2/B	15500 LBS [68900 N]	19000 LBS [84300 N]	12000 LBS [53400 N]	15200 LBS [67500 N]		
T140-1/B	16300 LBS [72100 N]	19700 LBS [87500 N]	12700 LBS [56500 N]	15900 LBS [70700 N]		

POWER FEEDER DATA 1CAR									
MOTOR	STANDARD VOLTAGE 208V				STANDARD VOLTAGE 480V				POWER SUPPLY CAPACITY [kW]
	CURRENT	FLU	FLAcc	BREAKER IN CONTROL PANEL [A]	CURRENT	FLU	FLAcc	BREAKER IN CONTROL PANEL [A]	
[HP] [kW]	[A]	[A]	[A]	[A]	[A]	[A]	[A]	[A]	[kW]
29.5 22	100 177	125 43	77 60	22	4610	1350	9220	2700	

DISCLAIMER:
 THESE CAD DRAWINGS SHOULD BE USED FOR REFERENCE ONLY. MEUS DISCLAIMS ALL RESPONSIBILITY FOR ANY REPRODUCTION, MODIFICATION, DISTRIBUTION OR INTEGRATION OF THESE CAD DRAWINGS INTO OTHER ARCHITECTURAL AND STRUCTURAL DRAWINGS. MEUS MARKETS NO WARRANTIES OF ANY KIND WITH RESPECT TO THE ACCURACY OR COMPLETENESS OF THESE CAD SCHEMATIC DRAWINGS FOR ANY PURPOSE. MEUS HEREBY EXPRESSLY DISCLAIMS ALL WARRANTIES, EXPRESSED OR IMPLIED, INCLUDING THE IMPLIED WARRANTIES OF MERCHANTABILITY AND FITNESS FOR A PARTICULAR PURPOSE.
 Copyright (c) 2005 Mitsubishi Electric & Electronic USA, Inc. All rights reserved.

NOTE :
 WHEN THE CANOPY HEIGHT IS CHANGED FROM THE DIMENSION ON THIS DRAWING, OVERHEAD AND THE BRACKET SPAN FOR UPPER RAILS SHALL BE CHANGED AS WELL.

*1,*2 : AS SHOWN IN THE FIGURE ABOVE, AN INSPECTION HATCH FOR USE IN THE MAINTENANCE OF THE CAR DOOR OPERATOR SHALL BE PROVIDED ABOVE THE ENTRANCE ON THE BOTTOM FLOOR, IF THE LANDING IS THE ONLY ONE IN THAT SIDE. HOWEVER, THIS INSPECTION HATCH WILL BE UNNECESSARY, IF THE PIT DEPTH CAN BE DEEPENED BY 0'-6 1/2" [165].

NO.	DATE	BY	REVISIONS
-	03/16/10	-	CREATED DRAWING

PROJECT: -
 ELEV. NO.: -
 DWG. TITLE: -
 ADMIN. NO.: -
 DWG. NO.: EZ-B-0087
 REV. -

DIAMOND TRAC
 ADMIN. NO [B-AM11KA-2852S-105-SW-NO]

SCALE : 1/50

NOT TO BE USED FOR CONSTRUCTION