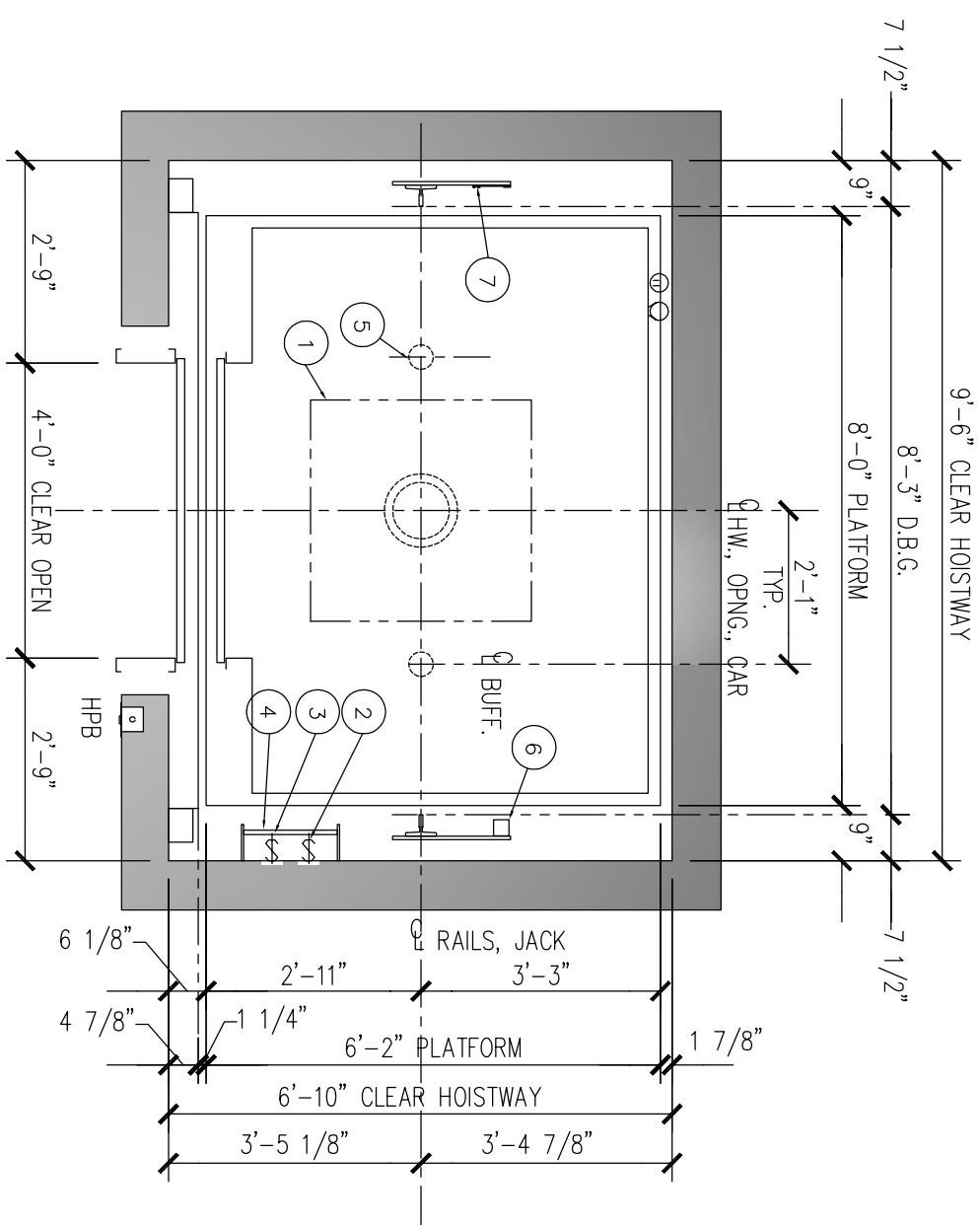


SAFETY BEAM 5000 LBS. CAPACITY (BY OTHERS) CENTERED OVER RAILS AT TOP OF HOISTWAY. MAY REQUIRE REMOVAL LATER FOR LEGAL OVERHEAD.

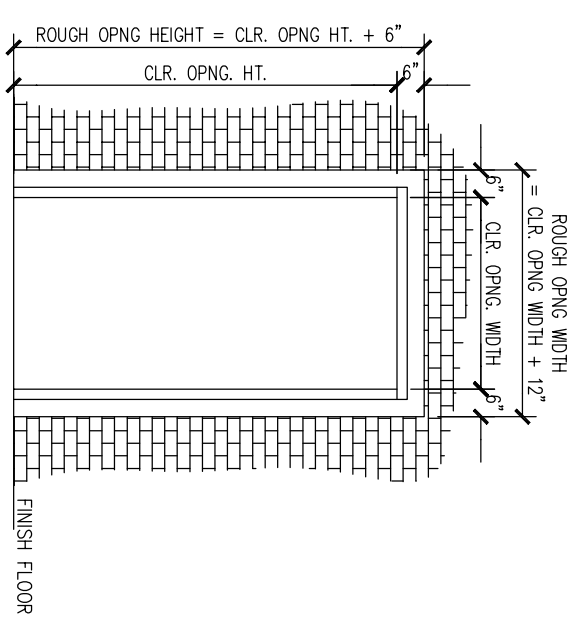
SEE MIN. OVERHEAD TABLE

CONSULT LOCAL SALES OFFICE IF TRAVEL > 50 FT.



- 1 36" SQ. BLOCKOUT @ PIT FLR. FOR JACK UNIT
- 2 LIGHT SWITCH-18" ABOVE LOWEST LANDING (BY OTHERS)
- 3 PIT STOP SWITCH
- 4 PIT LADDER (BY OTHERS)
- 5 SPRING BUFFERS LOCATED ON PIT FLOOR
- 6 LIMIT SWITCH
- 7 TAPE SELECTOR

HOISTWAY PLAN



ROUGH OPENING FOR ENTRANCE INSTALLATION
 CMU, CONCRETE CONSTRUCTION ONLY.
 ROUGH OPENING IS NOT REQUIRED FOR
 DRY WALL CONSTRUCTION

PLEASE NOTE THAT THESE RAIL REACTION NUMBERS ARE ESTIMATES AND ARE SUBJECT TO CHANGE AS ACCURATE INFORMATION BECOMES AVAILABLE.

SPECIFICATION		
USAGE	PASSENGER	
LOADING CLASS	A	
CAPACITY (LBS.)	4000	
RATED SPEED (FPM)	100,125,150	
RISE	MAX. 50'-0"	
RAIL REACTION (SEISMIC)		
MAX. RAIL BRKT SPAN	14'-0"	
R1 (LBS.)	2320	
R2 (LBS.)	1160	
MAX. RAIL BRKT SPAN (DSA)	9'-0"	
R1 (LBS.)	2150	
R2 (LBS.)	1075	
MIN. OVERHEAD REQUIRED		
ENTRANCE HEIGHT	CAB HEIGHT	MIN. OVERHEAD
8'-0"	8'-0"	12'-3"
7'-0"	9'-0"	13'-3"
	10'-0"	14'-3"
8'-0"	9'-0"	13'-3"
	10'-0"	14'-3"
9'-0"	10'-0"	14'-3"

NOTE: IF CAR TOP GUARD RAIL IS REQUIRED, ADD 3" TO THE MIN. O.H.

REV.	DATE	BY	REVISIONS

NOTE: THE EQUIPMENT HAS BEEN RELEASED FOR FABRICATION. ANY CHANGES MADE AFTER APPROVAL WILL RESULT IN ADDITIONAL COST AND COMPLETION TIME.

FOR APPROVAL
 REVISED FOR APPROVAL
 FINAL DISTRIBUTION
 REVISED FINAL DISTRIBUTION

PROJECT: -----
 ADDRESS: -----
 CONTRACTOR: -----
 ARCHITECT: -----
 CONSULTANT: -----

DRAWN: JC DATE: 9/6/13 APPROVED: JC
 DWG. TITLE: HOISTWAY PLAN & SECTION
 PROJECT NO.: ----- ELEM: 1

MITSUBISHI ELECTRIC
 ELEVATORS & ESCALATORS

DRAWING NO.: 101

HOISTWAY SECTION