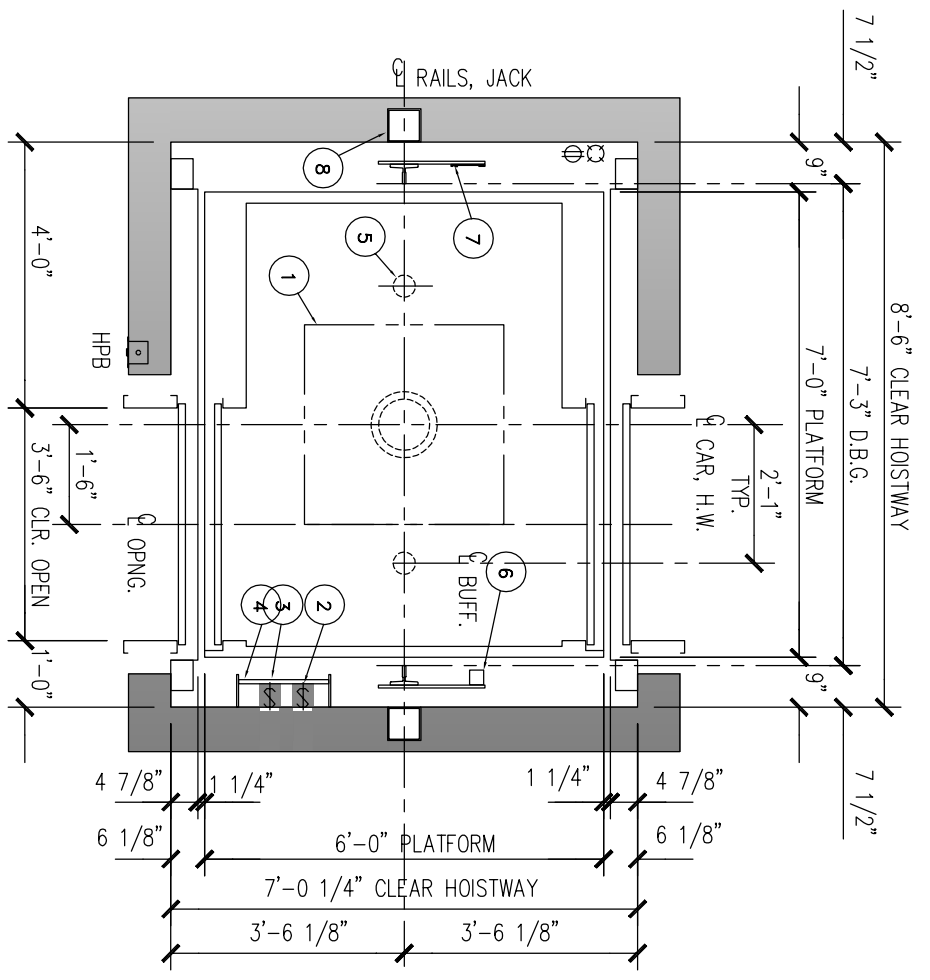


SAFETY BEAM 5000 LBS. CAPACITY (BY OTHERS) CENTERED OVER RAILS AT TOP OF HOISTWAY. MAY REQUIRE REMOVAL LATER FOR LEGAL OVERHEAD.

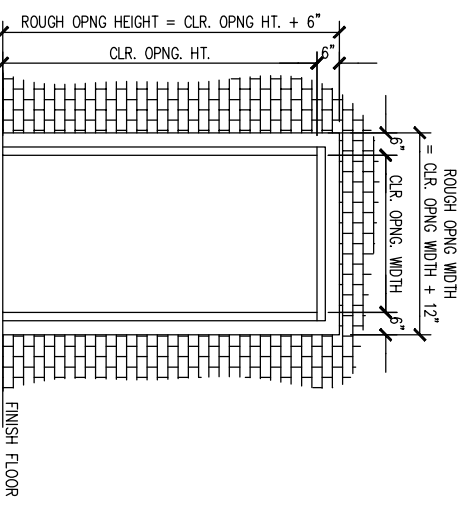
SEE MIN. OVERHEAD TABLE

CONSULT LOCAL SALES OFFICE IF TRAVEL > 50 FT.



HOISTWAY PLAN

- 1 36" SQ. BLOCKOUT @ PIT FLR. FOR JACK UNIT
- 2 LIGHT SWITCH-18" ABOVE LOWEST LANDING (BY OTHERS)
- 3 PIT STOP SWITCH
- 4 PIT LADDER ( BY OTHERS )
- 5 SPRING BUFFERS LOCATED ON PIT FLOOR
- 6 LIMIT SWITCH
- 7 TAPE SELECTOR



PLEASE NOTE THAT THESE RAIL REACTION NUMBERS ARE ESTIMATES AND ARE SUBJECT TO CHANGE AS ACCURATE INFORMATION BECOMES AVAILABLE.

SPECIFICATION	
USAGE	PASSENGER
LOADING CLASS	A
CAPACITY (LBS.)	3000
RATED SPEED (FPM)	100,125,150
RISE	MAX. 50'-0"
RAIL REACTION (SEISMIC)	
MAX. RAIL BRKT SPAN	14'-0"
R1 (LBS.)	1800
R2 (LBS.)	900
MAX. RAIL BRKT SPAN (OSA)	9'-0"
R1 (LBS.)	1700
R2 (LBS.)	850

MIN. OVERHEAD REQUIRED		
ENTRANCE HEIGHT	CAB HEIGHT	MIN. OVERHEAD
7'-0"	8'-0"	12'-3"
	9'-0"	13'-3"
	10'-0"	14'-3"
8'-0"	9'-0"	13'-3"
	10'-0"	14'-3"
	10'-0"	14'-3"

NOTE: WHEN THE EQUIPMENT HAS BEEN RELEASED FOR FABRICATION, ANY CHANGES MADE AFTER APPROVAL WILL RESULT IN ADDITIONAL COST AND COMPLETION TIME.

FOR APPROVAL  
 REVISED FOR APPROVAL  
 FINAL DISTRIBUTION  
 REVISED FINAL DISTRIBUTION

PROJECT: \_\_\_\_\_ ADDRESS: \_\_\_\_\_ CONTRACTOR: \_\_\_\_\_ ARCHITECT: \_\_\_\_\_ CONSULTANT: \_\_\_\_\_ DRAWN: JC DATE: 9/6/13 APPROVER: JC

DWG. TITLE: HOISTWAY PLAN & SECTION PROJECT NO.: \_\_\_\_\_ ELE#: 1 DRAWING NO.: 101

MITSUBISHI ELECTRIC ELEVATORS & ESCALATORS