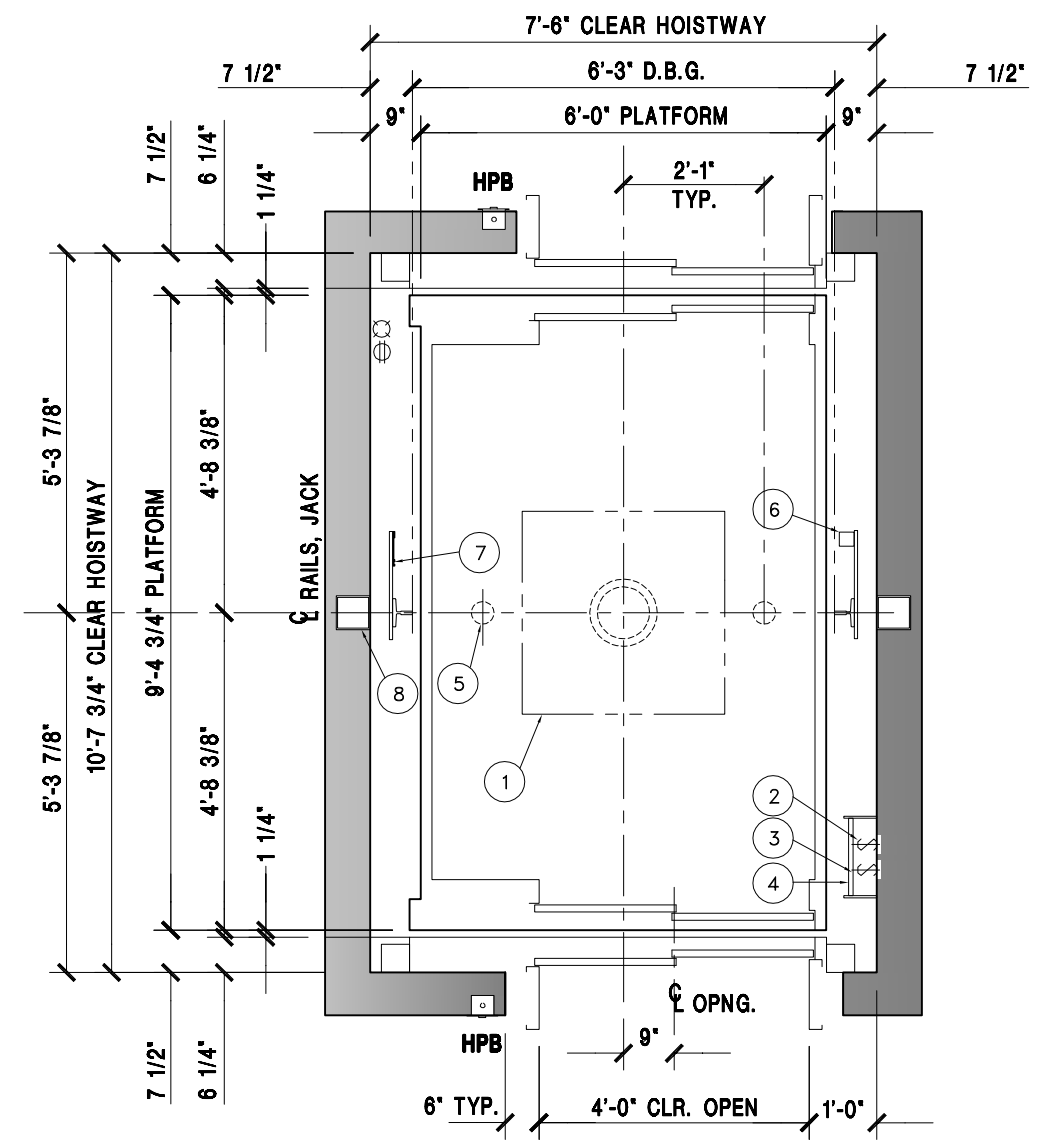


SAFETY BEAM 5000 LBS. CAPACITY (BY OTHERS) CENTERED OVER RAILS AT TOP OF HOISTWAY. MAY REQUIRE REMOVAL LATER FOR LEGAL OVERHEAD.

SEE MIN. OVERHEAD TABLE

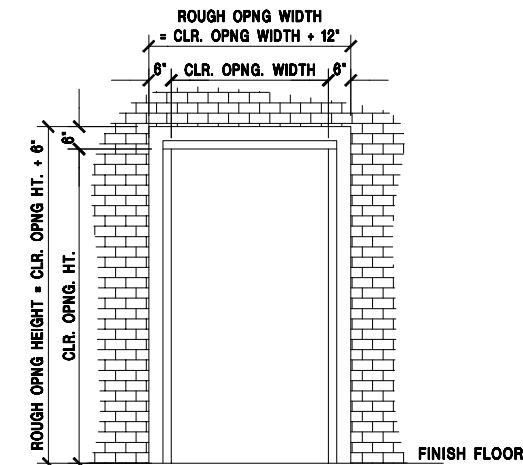
CONSULT LOCAL SALES OFFICE IF TRAVEL > 50 FT.

HOISTWAY SECTION



HOISTWAY PLAN

- ① 36" SQ. BLOCKOUT @ PIT FLR. FOR JACK UNIT
- ② LIGHT SWITCH-18" ABOVE LOWEST LANDING (BY OTHERS)
- ③ PIT STOP SWITCH
- ④ PIT LADDER (BY OTHERS)
- ⑤ SPRING BUFFERS LOCATED ON PIT FLOOR
- ⑥ LIMIT SWITCH
- ⑦ TAPE SELECTOR



ROUGH OPENING FOR ENTRANCE INSTALLATION
CMU, CONCRETE CONSTRUCTION ONLY;
ROUGH OPENING IS NOT REQUIRED FOR
DRY WALL CONSTRUCTION

PLEASE NOTE THAT THESE RAIL REACTION NUMBERS ARE ESTIMATES AND ARE SUBJECT TO CHANGE AS ACCURATE INFORMATION BECOMES AVAILABLE.

SPECIFICATION		
USAGE	SERVICE	
LOADING CLASS	A	
CAPACITY (LBS.)	4500	
RATED SPEED (FPM)	100,125,150	
RISE	MAX. 50'-0"	
RAIL REACTION (SEISMIC)		
	MAX. RAIL BRKT SPAN	14'-0"
	R1 (LBS.)	2750
	R2 (LBS.)	1375
	MAX. RAIL BRKT SPAN (DSA)	9'-0"
	R1 (LBS.)	2650
	R2 (LBS.)	1275
MIN. OVERHEAD REQUIRED		
ENTRANCE HEIGHT	CAB HEIGHT	MIN. OVERHEAD
7'-0"	8'-0"	12'-3"
	9'-0"	13'-3"
	10'-0"	14'-3"
8'-0"	9'-0"	13'-3"
	10'-0"	14'-3"
9'-0"	10'-0"	14'-3"
NOTE: IF CAR TOP GUARD RAIL IS REQUIRED, ADD 3" TO THE MIN O.H.		
REV.	DATE	BY REVISIONS
NOTE: WHEN THE EQUIPMENT HAS BEEN RELEASED FOR FABRICATION. ANY CHANGES MADE AFTER APPROVAL WILL RESULT IN ADDITIONAL COST AND COMPLETION TIME.		<input checked="" type="checkbox"/> FOR APPROVAL <input type="checkbox"/> REVISED FOR APPROVAL <input type="checkbox"/> FINAL DISTRIBUTION <input type="checkbox"/> REVISED FINAL DISTRIBUTION
PROJECT:	----	
ADDRESS:	----	
CONTRACTOR:	----	
ARCHITECT:	----	
CONSULTANT:	----	
DRAWN: JC	DATE: 9/6/13	APPROVED: JC
DWG. TITLE: HOISTWAY PLAN & SECTION		
PROJECT NO.: ----	ELE#: 1	
MITSUBISHI ELECTRIC ELEVATORS & ESCALATORS		DRAWING NO.:
		101