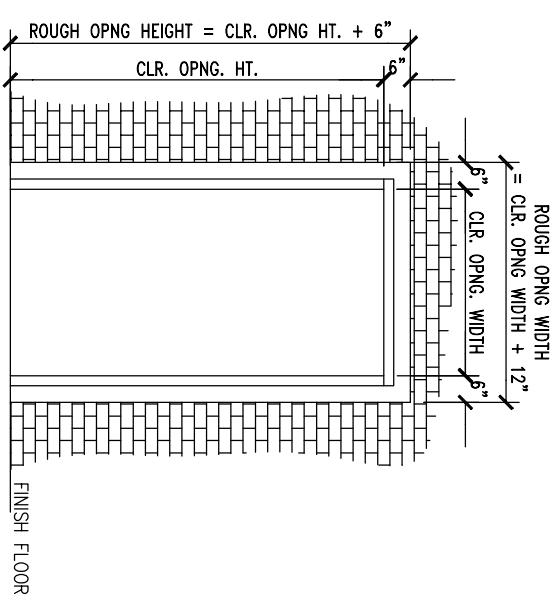
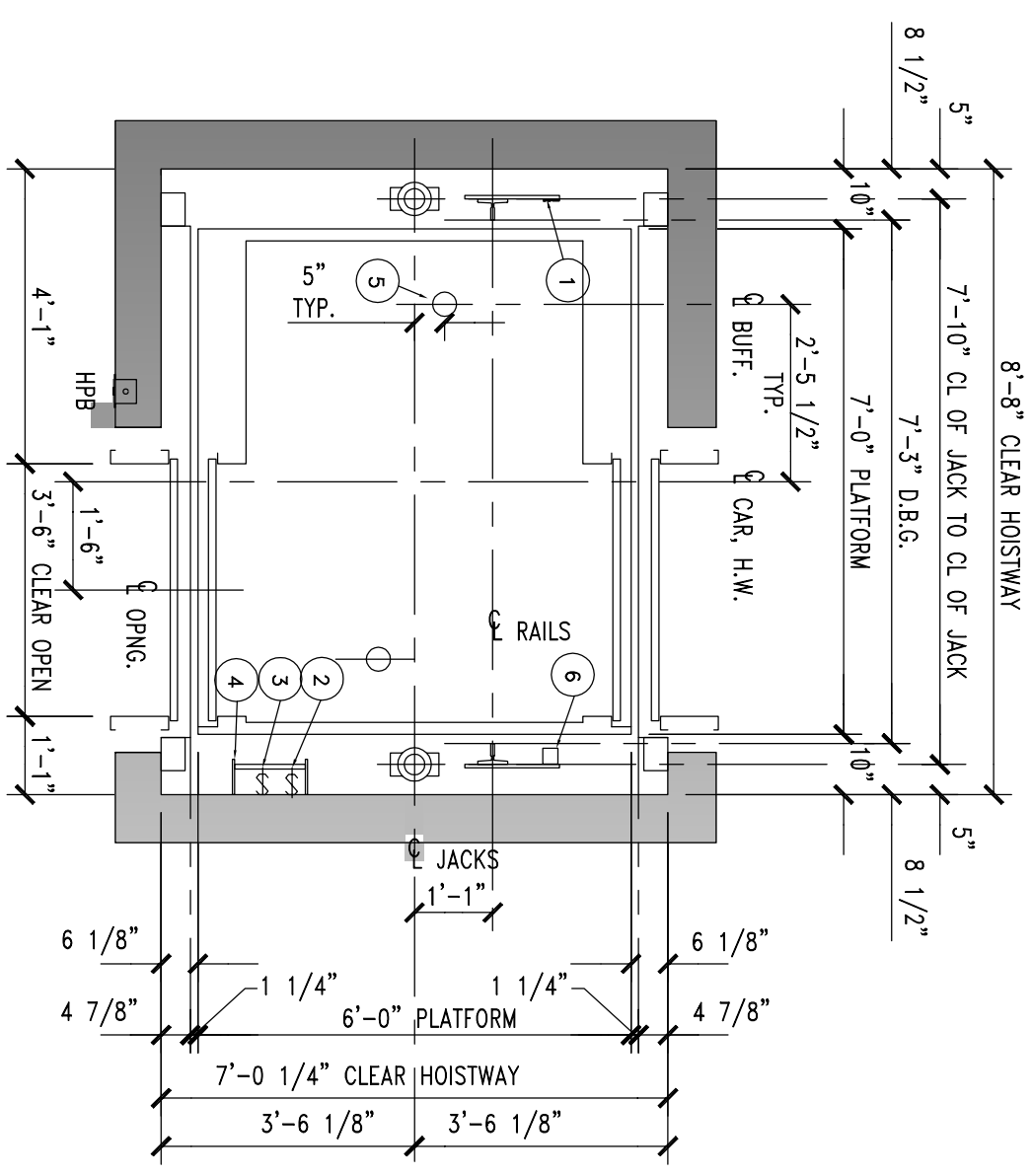
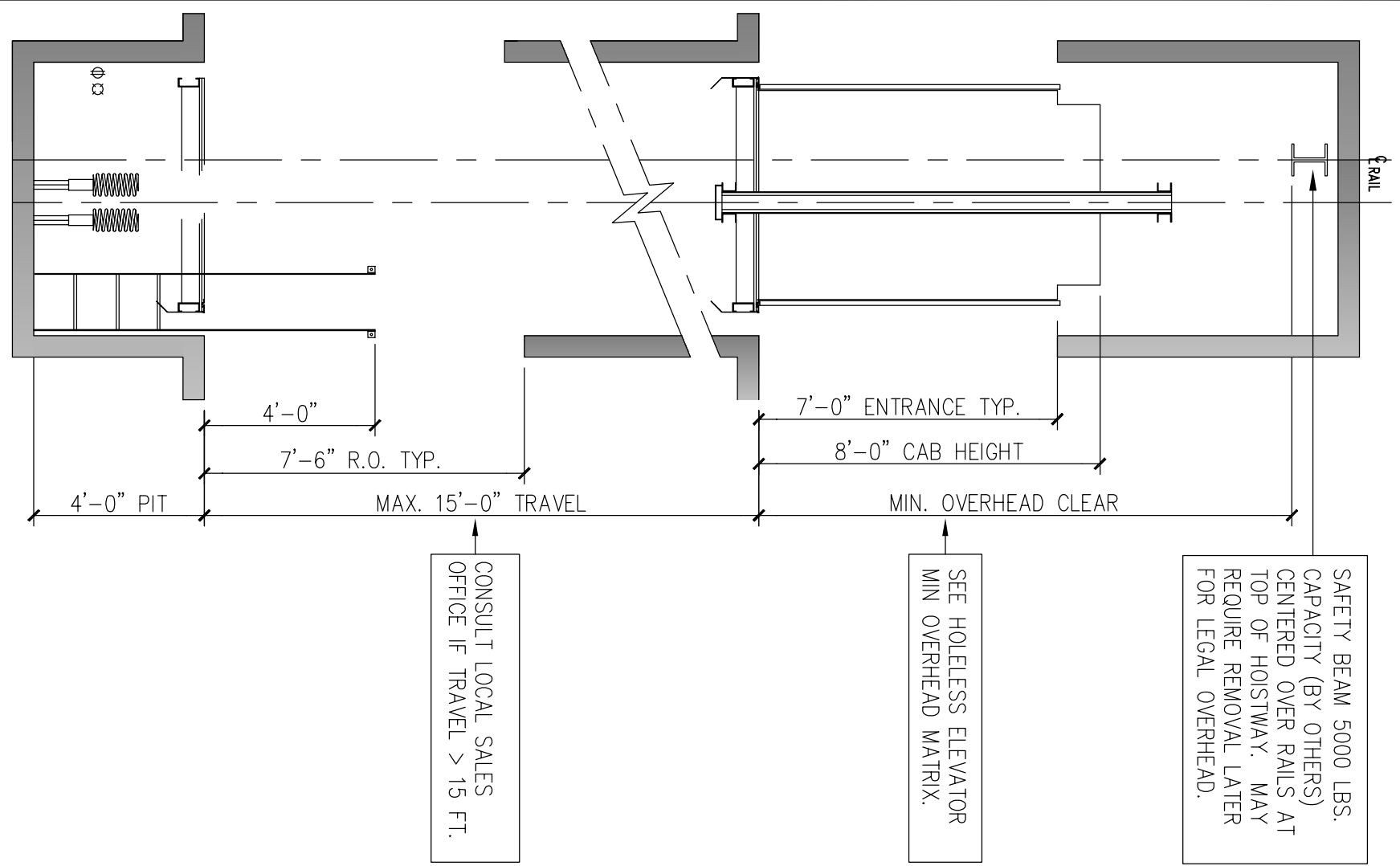


HOISTWAY SECTION



ROUGH OPENING FOR ENTRANCE INSTALLATION
 CMU, CONCRETE CONSTRUCTION ONLY;
 ROUGH OPENING IS NOT REQUIRED FOR
 DRY WALL CONSTRUCTION

HOISTWAY PLAN

- 1 TAPE SELECTOR
- 2 LIGHT SWITCH-18" ABOVE LOWEST LANDING (BY OTHERS)
- 3 PIT STOP SWITCH
- 4 PIT LADDER (BY OTHERS)
- 5 SPRING BUFFERS LOCATED ON PIT FLOOR
- 6 LIMIT SWITCH

PLEASE NOTE THAT THESE RAIL REACTION NUMBERS ARE ESTIMATES AND ARE SUBJECT TO CHANGE AS ACCURATE INFORMATION BECOMES AVAILABLE.

SPECIFICATION	
USAGE	PASSENGER
LOADING CLASS	A
CAPACITY (LBS.)	3000
RATED SPEED (FPM)	100,125
RISE	MAX. 15'-0"
RAIL REACTION (SEISMIC)	
MAX. RAIL BRKT SPAN	14'-0"
R1 (LBS.)	1800
R2 (LBS.)	900
MAX. RAIL BRKT SPAN (DSA)	9'-0"
R1 (LBS.)	1700
R2 (LBS.)	850

REV.	DATE	BY	REVISIONS
R1			
R2			

NOTE: WHEN THE EQUIPMENT HAS BEEN RELEASED FOR FABRICATION, ANY CHANGES MADE AFTER APPROVAL WILL RESULT IN ADDITIONAL COST AND COMPLETION TIME.		<input checked="" type="checkbox"/> FOR APPROVAL <input type="checkbox"/> REVISED FOR APPROVAL <input type="checkbox"/> FINAL DISTRIBUTION <input type="checkbox"/> REVISED FINAL DISTRIBUTION
PROJECT:	---	
ADDRESS:	---	
CONTRACTOR:	---	
ARCHITECT:	---	
CONSULTANT:	---	
DRAWN:	JC	DATE: 9/6/13
DWG. TITLE:	HOISTWAY PLAN & SECTION	
PROJECT NO.:	---	APPROVER: JC
		ELF: 1
		DRAWING NO.: 101