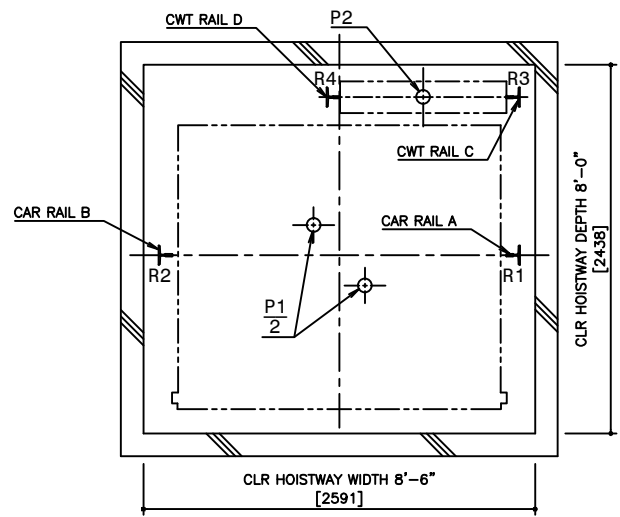
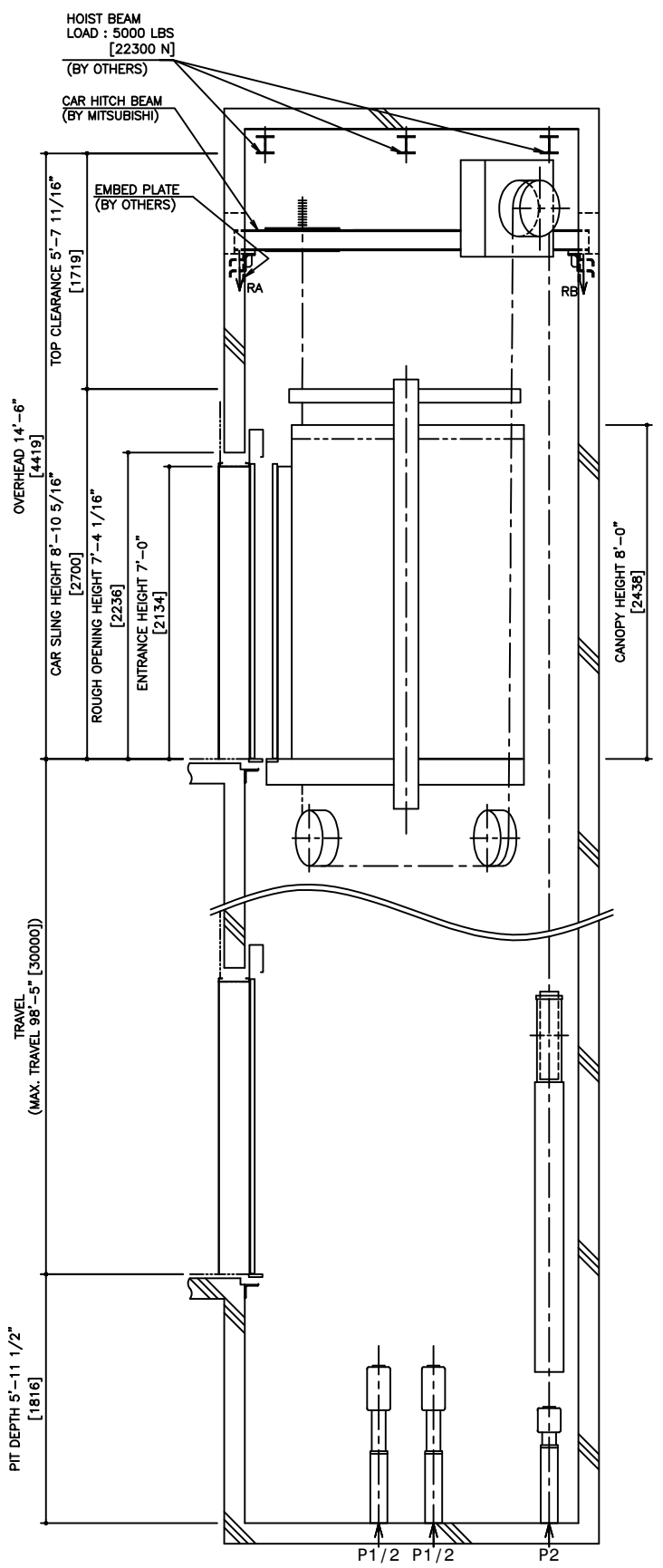


HOISTWAY PLAN
WITHOUT CWT SAFETY

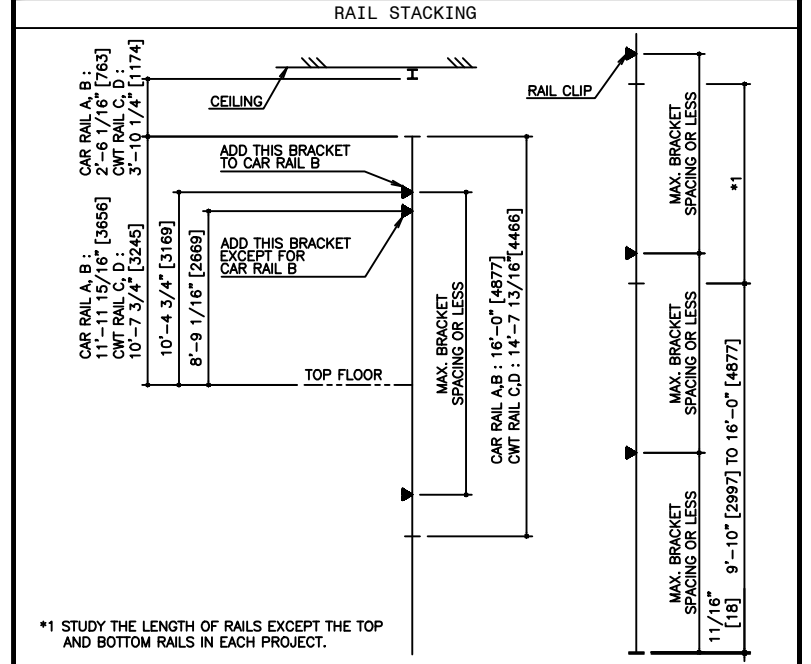


PIT PLAN
WITHOUT CWT SAFETY



HOISTWAY SECTION
WITHOUT CWT SAFETY

| SPECIFICATIONS | | |
|-------------------|-----------------------------|----------------------|
| SERIES | DIAMOND TRAC | |
| LOAD | 3500 LBS [1600 kg] | |
| SPEED | 350 FPM [105 m/min] | |
| REGULATION / CODE | ASME A17.1S - 2005 | |
| TRAVEL | MAX. TRAVEL : 98'-5" [30 m] | |
| DOOR TYPE | CO | |
| GUIDE RAIL | CAR | ZONE 0 TO 2 T127-1/B |
| | CWT | ZONE 3 & 4 T127-2/B |
| CWT SAFETY | ZONE 0 TO 2 | T127-1/B |
| | ZONE 3 & 4 | T127-2/B |
| NOT APPLIED | | |



| RAIL BRACKET SPACING | | | | |
|--------------------------|------------------------|--------------------|-----------------------|-------------------|
| SEISMIC ZONE (RAIL SIZE) | ZONE 0 TO 2 (T127-1/B) | | ZONE 3 & 4 (T127-2/B) | |
| | CAR | CWT | CAR | CWT |
| RAIL BRACKET SPACING | 12'-11 1/2" [3850] | 13'-5 7/16" [4100] | 11'-9 3/4" [3600] | 11'-9 3/4" [3600] |

| RAIL REACTION LOAD | | | | |
|--------------------------|------------------------|-------------------|--------------------|-------------------|
| SEISMIC ZONE (RAIL SIZE) | CAR RAIL A, B | | CWT RAIL C, D | |
| | F1X | F1Y | F1X | F1Y |
| | ZONE 0 TO 2 (T127-1/B) | 1500 LBS [6600 N] | 800 LBS [3300 N] | 1700 LBS [7200 N] |
| ZONE 3 & 4 (T127-2/B) | 3000 LBS [13100 N] | 1500 LBS [6600 N] | 3300 LBS [14300 N] | 1700 LBS [7200 N] |

| CAR HITCH BEAM LOAD | | | |
|---------------------|-------------------|--------------------|--------------------|
| STATIC LOAD | | DYNAMIC LOAD | |
| RA | RB | RA | RB |
| 4300 LBS [19000 N] | 1200 LBS [5000 N] | 8400 LBS [38000 N] | 2300 LBS [10000 N] |

| SEISMIC ZONE (RAIL SIZE) | RAIL REACTION LOAD | | | | BUFFER REACTION LOAD | |
|--------------------------|------------------------|---------------------|---------------------|---------------------|----------------------|----------------------|
| | R1 | R2 | R3 | R4 | P1 | P2 |
| | ZONE 0 TO 2 (T127-1/B) | 11900 LBS [53000 N] | 11300 LBS [51000 N] | 10200 LBS [46000 N] | 6400 LBS [29000 N] | 41000 LBS [182000 N] |
| ZONE 3 & 4 (T127-2/B) | 12300 LBS [55000 N] | 11700 LBS [52000 N] | 10600 LBS [47000 N] | 6800 LBS [31000 N] | | |

| POWER FEEDER DATA 1CAR | | | | | | | | | | | | |
|------------------------|-----------------------|-----------|------------------------------|-------------|-----------------------|-----------|------------------------------|---------------------------|-----------------------------|------------------------|----------|----------|
| MOTOR | STANDARD VOLTAGE 208V | | | | STANDARD VOLTAGE 480V | | | | POWER SUPPLY CAPACITY [kVA] | HEAT EMISSION | | |
| | FLU [A] | FLAcc [A] | BREAKER IN CONTROL PANEL [A] | CURRENT [A] | FLU [A] | FLAcc [A] | BREAKER IN CONTROL PANEL [A] | HOISTWAY CAPACITY [BTU/h] | | CONTROL PANEL ROOM [W] | | |
| 24.1 [HP] | 18.0 [kW] | 78 [A] | 138 [A] | 100 [A] | 34 [A] | 60 [A] | 40 [A] | 17 [kVA] | 3070 [BTU/h] | 900 [W] | 7000 [W] | 2050 [W] |

POWER CURRENT CORRESPONDING TO LOCAL SUPPLY VOLTAGE (FLU or FLAcc) [A]
 = EACH CURRENT (FLU or FLAcc) [A] x STANDARD VOLTAGE (E1 or E2) [V]
 LOCAL SUPPLY VOLTAGE (E) [V]

DISCLAIMER:
 THESE CAD DRAWINGS SHOULD BE USED FOR REFERENCE ONLY. MEUS DISCLAIMS ALL RESPONSIBILITY FOR ANY REPRODUCTION, MODIFICATION, DISTRIBUTION OR INTEGRATION OF THESE CAD DRAWINGS INTO OTHER ARCHITECTURAL AND STRUCTURAL DRAWINGS. MEUS MARKETS NO WARRANTIES OF ANY KIND WITH RESPECT TO THE ACCURACY OR COMPLETENESS OF THESE CAD SCHEMATIC DRAWINGS FOR ANY PURPOSE. MEUS HEREBY EXPRESSLY DISCLAIMS ALL WARRANTIES, EXPRESSED OR IMPLIED, INCLUDING THE IMPLIED WARRANTIES OF MERCHANTABILITY AND FITNESS FOR A PARTICULAR PURPOSE.
 Copyright (c) 2005 Mitsubishi Electric & Electronic USA, Inc. All rights reserved.

NOTE :
 WHEN THE CANOPY HEIGHT IS CHANGED FROM THE DIMENSION ON THIS DRAWING, OVERHEAD AND THE BRACKET SPAN FOR UPPER RAILS SHALL BE CHANGED AS WELL.

| NO. | DATE | BY | REVISIONS |
|-----|----------|----|-----------------|
| - | 02/13/07 | - | CREATED DRAWING |

PROJECT: -
 ELEV. NO.: -
 DWG. TITLE: -
 ADMIN. NO.: -
 DWG. NO.: EZ-B-0045
 REV.:

MITSUBISHI
 ELEVATORS & ESCALATORS

DIAMOND TRAC

SCALE : 1/50

NOT TO BE USED FOR CONSTRUCTION