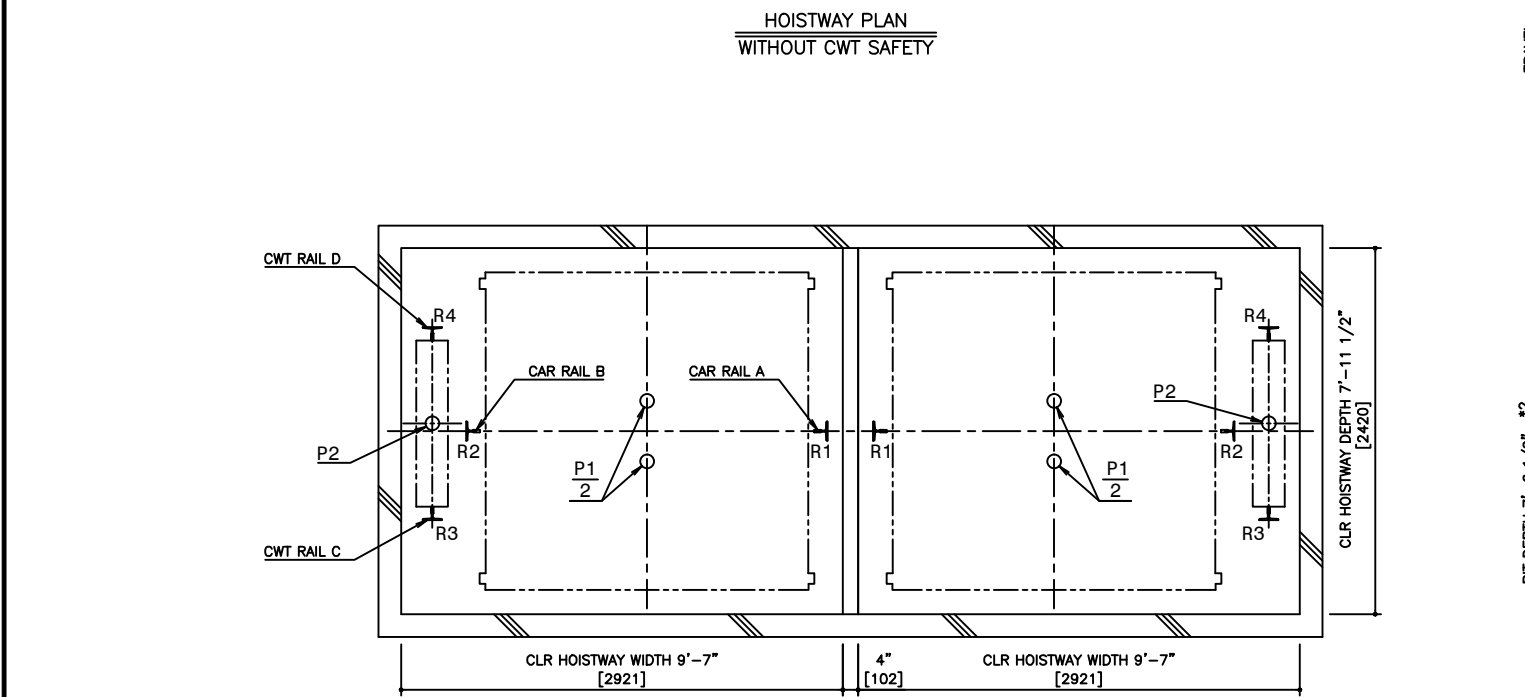
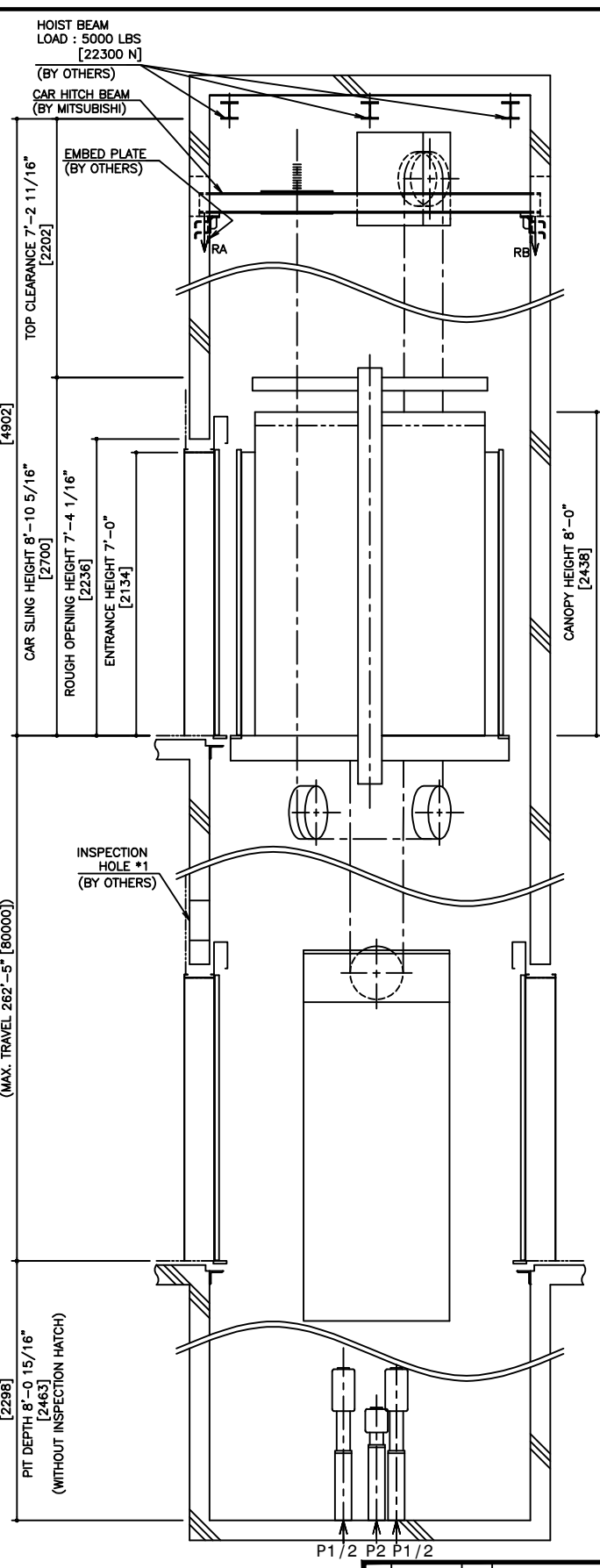


HOISTWAY PLAN
WITHOUT CWT SAFETY



PIT PLAN
WITHOUT CWT SAFETY

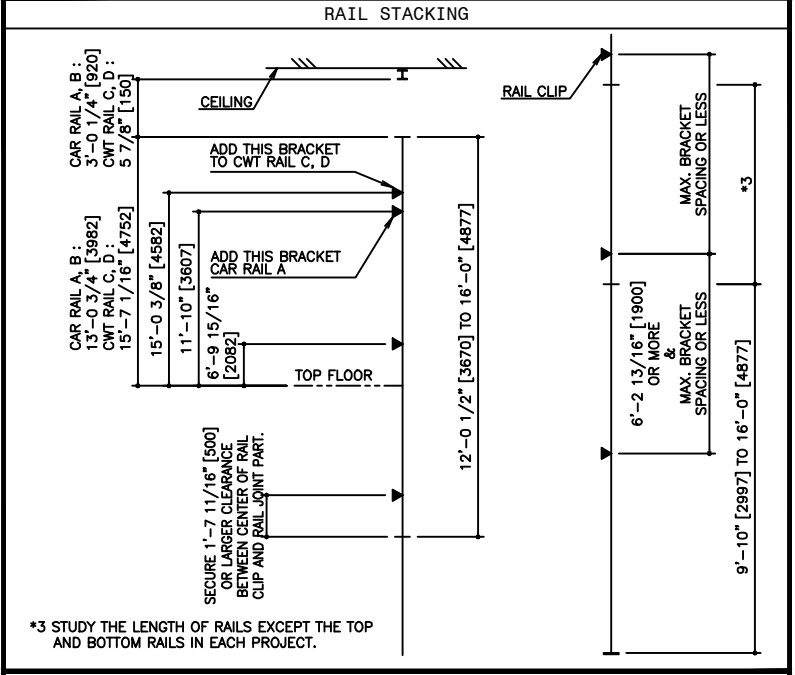


HOISTWAY SECTION
WITHOUT CWT SAFETY

*1,*2 : AS SHOWN IN THE FIGURE ABOVE, AN INSPECTION HATCH FOR USE IN THE MAINTENANCE OF THE CAR DOOR OPERATOR SHALL BE PROVIDED ABOVE THE ENTRANCE ON THE BOTTOM FLOOR, IF THE LANDING IS THE ONLY ONE IN THAT SIDE. HOWEVER, THIS INSPECTION HATCH WILL BE UNNECESSARY, IF THE PIT DEPTH CAN BE DEEPENED BY 0'-6 1/2\"/>

NOTE :
-WHEN THE CANOPY HEIGHT IS CHANGED FROM THE DIMENSION ON THIS DRAWING, OVERHEAD AND THE BRACKET SPAN FOR UPPER RAILS SHALL BE CHANGED AS WELL.
-IF ASME A17.1-2004 APPLIES, ADD 2\"/>

SPECIFICATIONS	
SERIES	DIAMOND TRAC
LOAD	3500 LBS [1588 kg]
SPEED	500 FPM [150 m/min]
REGULATION / CODE	ASME A17.1 - 2010
TRAVEL	MAX. TRAVEL : 262'-5\"/>
DOOR TYPE	CO
GUIDE RAIL	CAR ZONE 0 TO 2 T127-1/B ZONE 3 & 4 T127-2/B CWT ZONE 0 TO 2 T127-1/B ZONE 3 & 4 T127-2/B
CWT SAFETY	NOT APPLIED



RAIL BRACKET SPACING				
SEISMIC ZONE (RAIL SIZE)	ZONE 0 TO 2 (T127-1/B)		ZONE 3 & 4 (T127-2/B)	
	CAR	CWT	CAR	CWT
RAIL BRACKET SPACING	13'-1 7/16\"/>			

SEISMIC ZONE (RAIL SIZE)	RAIL REACTION LOAD			
	CAR RAIL A, B		CWT RAIL C, D	
	FIX	F1Y	FIX	F1Y
ZONE 0 TO 2 (T127-1/B)	1500 LBS [6500 N]	800 LBS [3400 N]	1600 LBS [7100 N]	800 LBS [3600 N]
ZONE 3 & 4 (T127-2/B)	3000 LBS [13000 N]	1500 LBS [6500 N]	3200 LBS [14200 N]	1600 LBS [7100 N]

CAR HITCH BEAM LOAD			
STATIC LOAD		DYNAMIC LOAD	
RA	RB	RA	RB
4100 LBS [18000 N]	1600 LBS [7000 N]	7900 LBS [35000 N]	3200 LBS [14000 N]

SEISMIC ZONE (RAIL SIZE)	RAIL REACTION LOAD				BUFFER REACTION LOAD	
	R1	R2	R3	R4	P1	P2
	ZONE 0 TO 2 (T127-1/B)	14000 LBS [62000 N]	15600 LBS [69000 N]	11300 LBS [50000 N]	12600 LBS [56000 N]	41400 LBS [185000 N]
ZONE 3 & 4 (T127-2/B)	15100 LBS [67000 N]	16700 LBS [74000 N]	12200 LBS [54000 N]	13500 LBS [60000 N]		

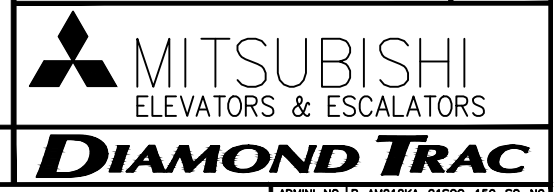
POWER FEEDER DATA 1CAR												
MOTOR	STANDARD VOLTAGE 208V				STANDARD VOLTAGE 480V				HEAT EMISSION			
	CURRENT	BREAKER IN CONTROL PANEL		CURRENT	BREAKER IN CONTROL PANEL		POWER SUPPLY CAPACITY	HOISTWAY (EXCEPT CAR LIGHTING)		CONTROL PANEL ROOM		
[HP]	[kW]	FLU [A]	FLAcc [A]	[A]	FLU [A]	FLAcc [A]	[kVA]	[BTU/Hr]	[W]	[BTU/Hr]	[W]	
33.5	25	110.0	195.7	125	47.7	84.9	60	24	4440	1300	12450	3650

POWER CURRENT CORRESPONDING TO LOCAL SUPPLY VOLTAGE (FLU or FLAcc) [A]
STANDARD VOLTAGE (E1 or E2) [V]
= EACH CURRENT (FLU or FLAcc) [A] X LOCAL SUPPLY VOLTAGE (E) [V]

DISCLAIMER:
THESE CAD DRAWINGS SHOULD BE USED FOR REFERENCE ONLY. MEUS DISCLAIMS ALL RESPONSIBILITY FOR ANY REPRODUCTION, MODIFICATION, DISTRIBUTION OR INTEGRATION OF THESE CAD DRAWINGS INTO OTHER ARCHITECTURAL AND STRUCTURAL DRAWINGS. MEUS MARKETS NO WARRANTIES OF ANY KIND WITH RESPECT TO THE ACCURACY OR COMPLETENESS OF THESE CAD SCHEMATIC DRAWINGS FOR ANY PURPOSE. MEUS HEREBY EXPRESSLY DISCLAIMS ALL WARRANTIES, EXPRESSED OR IMPLIED, INCLUDING THE IMPLIED WARRANTIES OF MERCHANTABILITY AND FITNESS FOR A PARTICULAR PURPOSE.
Copyright (c) 2005 Mitsubishi Electric & Electronic USA, Inc. All rights reserved.

NO.	DATE	BY	REVISIONS
-	8/12/15	-	CREATED DRAWING

PROJECT: -
ELEV. NO.: -
DWG. TITLE: -
ADMIN. NO.: -
DWG. NO.: EZ-B-0254
REV.



SCALE : 1/50

NOT TO BE USED FOR CONSTRUCTION