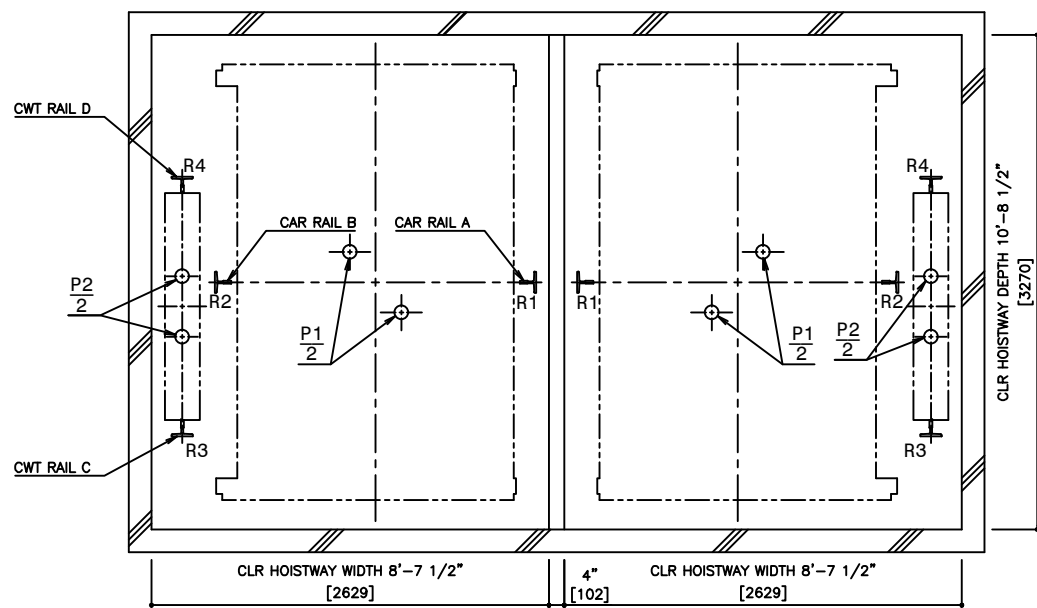
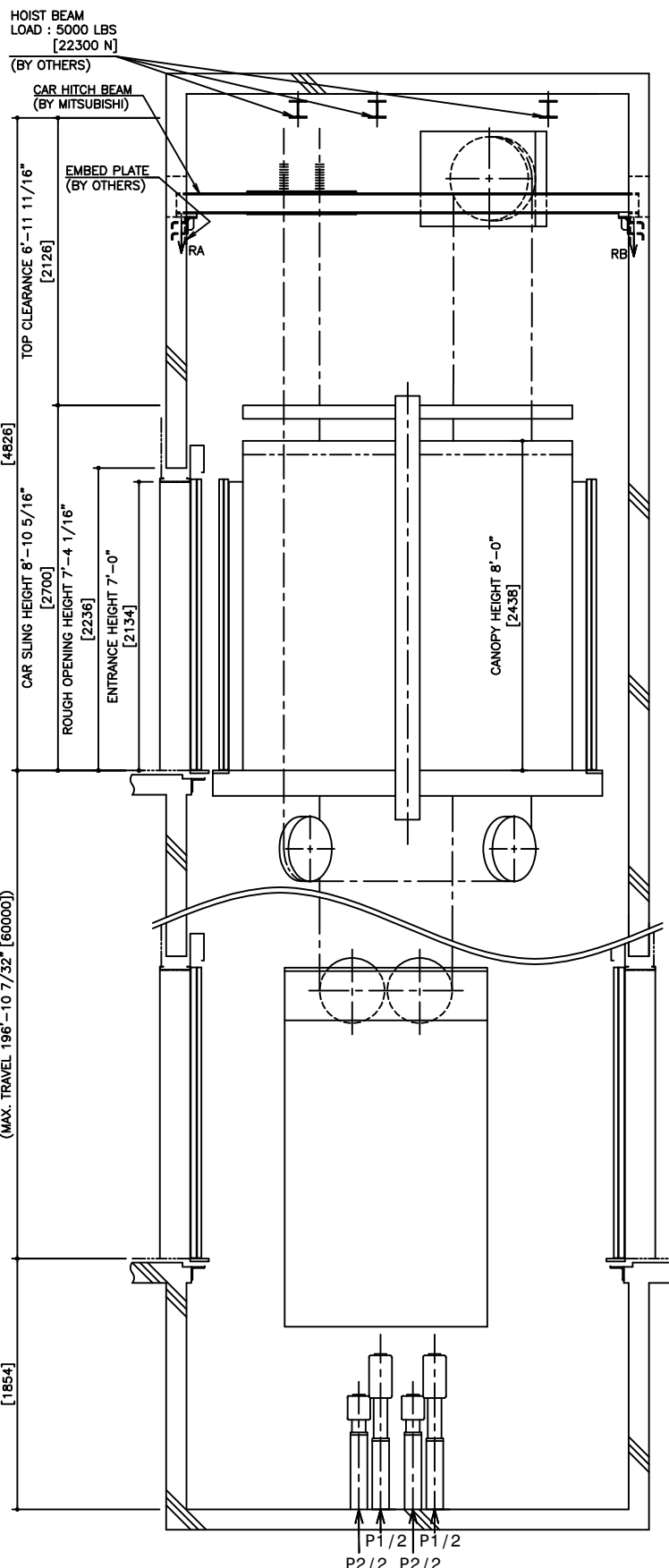


HOISTWAY PLAN  
WITHOUT CWT SAFETY

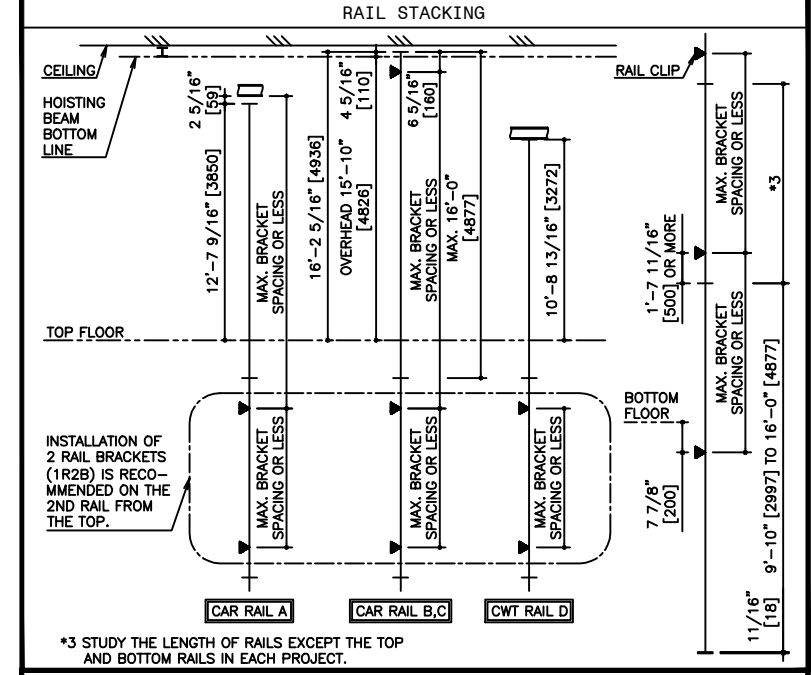


PIT PLAN  
WITHOUT CWT SAFETY



HOISTWAY SECTION  
WITHOUT CWT SAFETY

| SPECIFICATIONS    |                                     |
|-------------------|-------------------------------------|
| SERIES            | DIAMOND TRAC                        |
| LOAD              | 4500 LBS [2000 kg]                  |
| SPEED             | 350 FPM [105 m/min]                 |
| REGULATION / CODE | ASME A17.1S - 2005                  |
| TRAVEL            | MAX. TRAVEL : 196'-10 7/32" [60000] |
| DOOR TYPE         | 2S                                  |
| GUIDE RAIL        | CAR T127-1/B, T127-2/B, T140-1/B    |
| CWT               | T127-1/B, T127-2/B, T140-1/B        |
| CWT SAFETY        | NOT APPLIED                         |



| RAIL BRACKET SPACING |                   |                         |                        |                       |                       |
|----------------------|-------------------|-------------------------|------------------------|-----------------------|-----------------------|
| SEISMIC ZONE         | ZONE 0 TO 2       |                         |                        | ZONE 3 & 4            |                       |
| RAIL SIZE            | T127-1/B          | T127-2/B                | T140-1/B               | T127-1/B              | T140-1/B              |
| RAIL BRACKET SPACING | CAR 10'-4" [3150] | CWT 11'-3 13/16" [3490] | CAR 12'-11 1/2" [3990] | CAR 14'-3 1/4" [4350] | CWT 16'-4 7/8" [4950] |

| RAIL REACTION LOAD |                    |                   |                    |                   |
|--------------------|--------------------|-------------------|--------------------|-------------------|
| SEISMIC ZONE       | CAR RAIL A, B      |                   | CWT RAIL C, D      |                   |
|                    | FIX                | FIY               | FIX                | FIY               |
| ZONE 0 TO 2        | 1800 LBS [8100 N]  | 900 LBS [4100 N]  | 2000 LBS [8900 N]  | 1000 LBS [4500 N] |
| ZONE 3 & 4         | 3600 LBS [16100 N] | 1800 LBS [8100 N] | 4000 LBS [17800 N] | 2000 LBS [8900 N] |

| CAR HITCH BEAM LOAD |                   |                    |                    |
|---------------------|-------------------|--------------------|--------------------|
| STATIC LOAD         |                   | DYNAMIC LOAD       |                    |
| RA                  | RB                | RA                 | RB                 |
| 4900 LBS [22000 N]  | 1400 LBS [7000 N] | 9800 LBS [44000 N] | 2700 LBS [12000 N] |

| PIT REACTION LOAD        |                     |                     |                    |                     |                      |                      |
|--------------------------|---------------------|---------------------|--------------------|---------------------|----------------------|----------------------|
| SEISMIC ZONE (RAIL SIZE) | RAIL REACTION LOAD  |                     |                    |                     | BUFFER REACTION LOAD |                      |
|                          | R1                  | R2                  | R3                 | R4                  | P1                   | P2                   |
| T127-1/B                 | 14800 LBS [65600 N] | 18300 LBS [81100 N] | 3800 LBS [16500 N] | 14500 LBS [64200 N] | 47900 LBS [213000 N] | 38900 LBS [173000 N] |
| T127-2/B                 | 15500 LBS [68900 N] | 19000 LBS [84300 N] | 4500 LBS [19800 N] | 15200 LBS [67500 N] | 47900 LBS [213000 N] | 38900 LBS [173000 N] |
| T140-1/B                 | 16300 LBS [72100 N] | 19700 LBS [87500 N] | 5200 LBS [23000 N] | 15900 LBS [70700 N] | 47900 LBS [213000 N] | 38900 LBS [173000 N] |

| POWER FEEDER DATA 1CAR |                       |         |           |                              |                       |         |           |                              |                             |          |               |          |
|------------------------|-----------------------|---------|-----------|------------------------------|-----------------------|---------|-----------|------------------------------|-----------------------------|----------|---------------|----------|
| MOTOR                  | STANDARD VOLTAGE 208V |         |           |                              | STANDARD VOLTAGE 480V |         |           |                              | POWER SUPPLY CAPACITY [kVA] |          |               |          |
|                        | CURRENT [A]           | FLU [A] | FLAcc [A] | BREAKER IN CONTROL PANEL [A] | CURRENT [A]           | FLU [A] | FLAcc [A] | BREAKER IN CONTROL PANEL [A] |                             |          |               |          |
| 29.5 [HP]              | 22 [kW]               | 100     | 177       | 125                          | 43                    | 77      | 60        | 22                           | 4610 [BTU/Hr]               | 1350 [W] | 9220 [BTU/Hr] | 2700 [W] |

| NO. | DATE     | BY | REVISIONS       |
|-----|----------|----|-----------------|
| -   | 03/16/10 | -  | CREATED DRAWING |

PROJECT: -  
ELEV. NO.: -  
DWG. TITLE: -  
ADMIN. NO.: -  
DWG. NO.: EZ-B-0094  
REV. -

MITSUBISHI ELEVATORS & ESCALATORS  
**DIAMOND TRAC**

**DISCLAIMER:**  
THESE CAD DRAWINGS SHOULD BE USED FOR REFERENCE ONLY. MEUS DISCLAIMS ALL RESPONSIBILITY FOR ANY REPRODUCTION, MODIFICATION, DISTRIBUTION OR INTEGRATION OF THESE CAD DRAWINGS INTO OTHER ARCHITECTURAL AND STRUCTURAL DRAWINGS. MEUS MARKETS NO WARRANTIES OF ANY KIND WITH RESPECT TO THE ACCURACY OR COMPLETENESS OF THESE CAD SCHEMATIC DRAWINGS FOR ANY PURPOSE. MEUS HEREBY EXPRESSLY DISCLAIMS ALL WARRANTIES, EXPRESSED OR IMPLIED, INCLUDING THE IMPLIED WARRANTIES OF MERCHANTABILITY AND FITNESS FOR A PARTICULAR PURPOSE.  
Copyright (c) 2005 Mitsubishi Electric & Electronic USA, Inc. All rights reserved.

NOTE :  
WHEN THE CANOPY HEIGHT IS CHANGED FROM THE DIMENSION ON THIS DRAWING, OVERHEAD AND THE BRACKET SPAN FOR UPPER RAILS SHALL BE CHANGED AS WELL.

\*1,\*2 : AS SHOWN IN THE FIGURE ABOVE, AN INSPECTION HATCH FOR USE IN THE MAINTENANCE OF THE CAR DOOR OPERATOR SHALL BE PROVIDED ABOVE THE ENTRANCE ON THE BOTTOM FLOOR, IF THE LANDING IS THE ONLY ONE IN THAT SIDE. HOWEVER, THIS INSPECTION HATCH WILL BE UNNECESSARY, IF THE PIT DEPTH CAN BE DEEPENED BY 0'-6 1/2" [165].

SCALE : 1/50

NOT TO BE USED FOR CONSTRUCTION