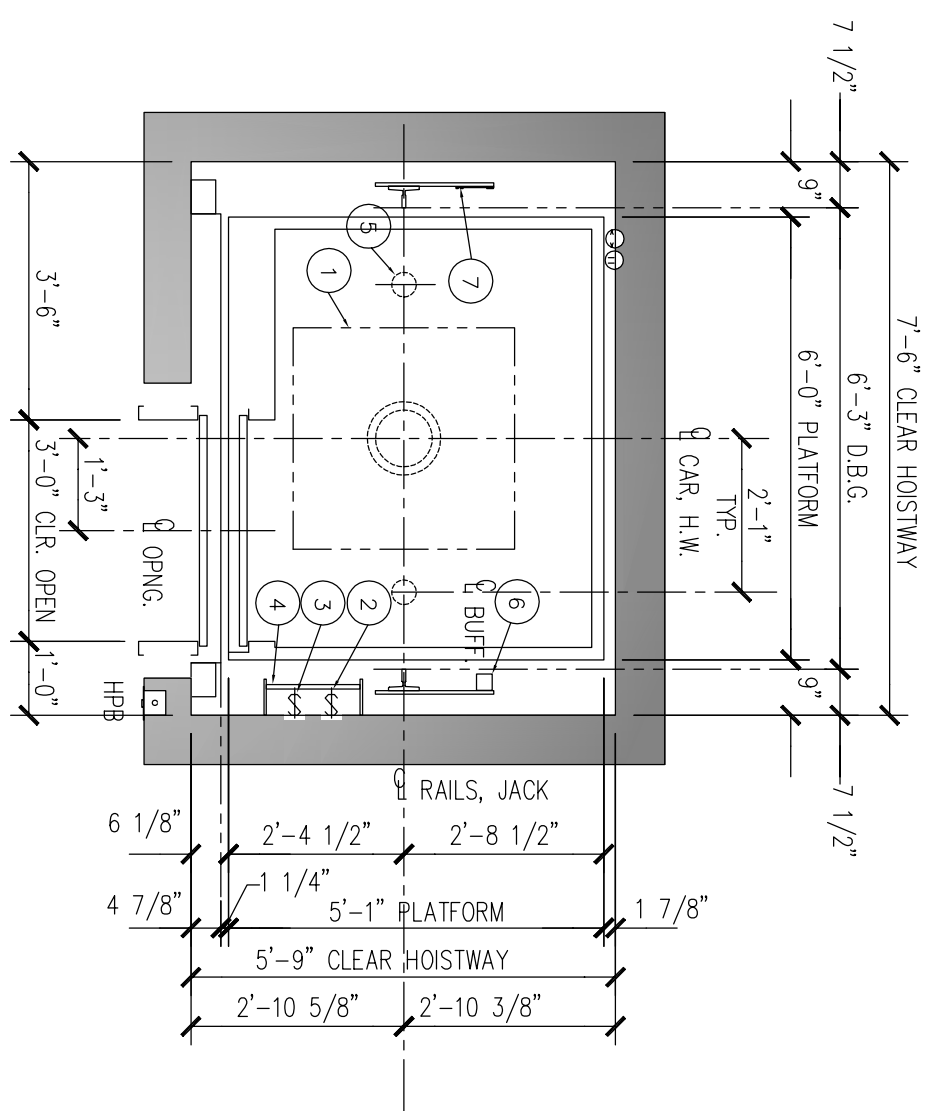


SAFETY BEAM 5000 LBS. CAPACITY (BY OTHERS) CENTERED OVER RAILS AT TOP OF HOISTWAY. MAY REQUIRE REMOVAL LATER FOR LEGAL OVERHEAD.

SEE MIN. OVERHEAD TABLE

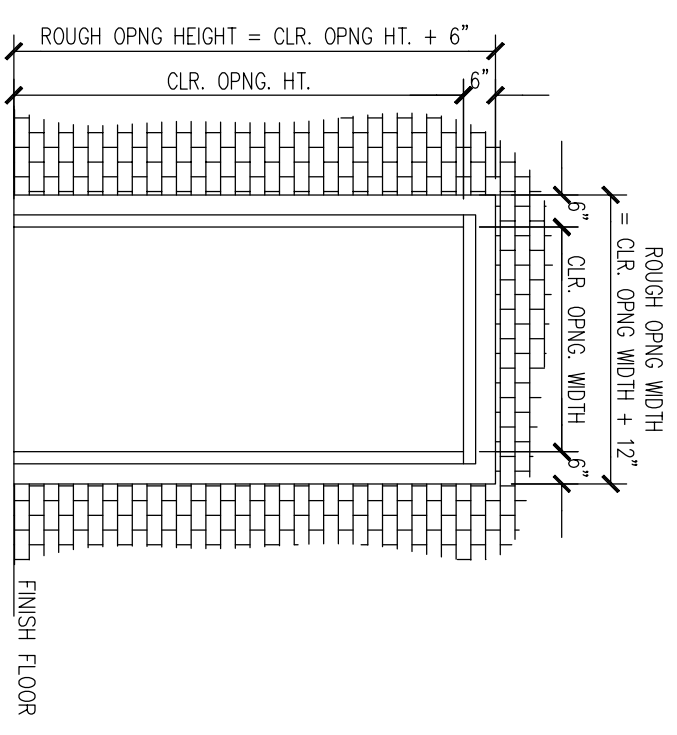
CONSULT LOCAL SALES OFFICE IF TRAVEL > 50 FT.



RIGHT HAND OPENING AS SHOWN;
LEFT HAND OPENING OPPOSITE

HOISTWAY PLAN

- 1 36" SQ. BLOCKOUT @ PIT FLR. FOR JACK UNIT
- 2 LIGHT SWITCH-18" ABOVE LOWEST LANDING (BY OTHERS)
- 3 PIT STOP SWITCH
- 4 PIT LADDER (BY OTHERS)
- 5 SPRING BUFFERS LOCATED ON PIT FLOOR
- 6 LIMIT SWITCH
- 7 TAPE SELECTOR



ROUGH OPENING FOR ENTRANCE INSTALLATION
CMU, CONCRETE CONSTRUCTION ONLY;
ROUGH OPENING IS NOT REQUIRED FOR
DRY WALL CONSTRUCTION

PLEASE NOTE THAT THESE RAIL REACTION NUMBERS ARE ESTIMATES AND ARE SUBJECT TO CHANGE AS ACCURATE INFORMATION BECOMES AVAILABLE.

SPECIFICATION	
USAGE	PASSENGER
LOADING CLASS	A
CAPACITY (LBS.)	2100
RATED SPEED (FPM)	100,125,150
RISE	MAX 50'-0"
RAIL REACTION (SEISMIC)	
MAX. RAIL BRKT SPAN	14'-0"
R1 (LBS.)	1300
R2 (LBS.)	650
MAX. RAIL BRKT SPAN (D5A)	9'-0"
R1 (LBS.)	1200
R2 (LBS.)	600

MIN. OVERHEAD REQUIRED			
ENTRANCE HEIGHT	CAB HEIGHT	MIN. OVERHEAD	
8'-0"	8'-0"	12'-3"	
7'-0"	9'-0"	13'-3"	
	10'-0"	14'-3"	
	9'-0"	13'-3"	
	10'-0"	14'-3"	
	10'-0"	14'-3"	

NOTE: IF CAR TOP GUARD RAIL IS REQUIRED, ADD 3" TO THE MIN. O.H.

NOTE: WHEN THE EQUIPMENT HAS BEEN RELEASED FOR FABRICATION, ANY CHANGES MADE AFTER APPROVAL WILL RESULT IN ADDITIONAL COST AND COMPLETION TIME.

FOR APPROVAL
 REVISED FOR APPROVAL
 FINAL DISTRIBUTION
 REVISED FINAL DISTRIBUTION

PROJECT: -----
 ADDRESS: -----
 CONTRACTOR: -----
 ARCHITECT: -----
 CONSULTANT: -----

DWG. TITLE: HOISTWAY PLAN & SECTION
 DRAWN: JC DATE: 9/6/13 APPROVER: JC
 PROJECT NO.: ----- ELEM: 1

MITSUBISHI ELECTRIC
 ELEVATORS & ESCALATORS

DRAWING NO.: 101

HOISTWAY SECTION