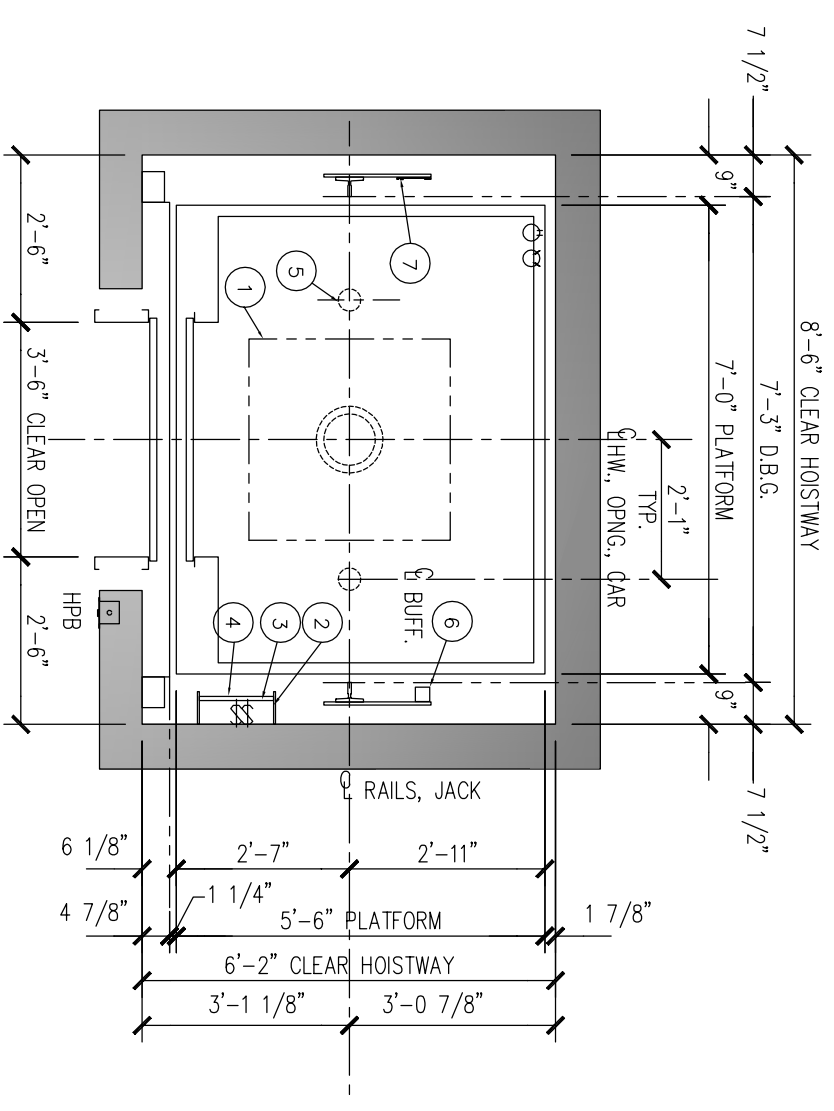


SAFETY BEAM 5000 LBS. CAPACITY (BY OTHERS) CENTERED OVER RAILS AT TOP OF HOISTWAY. MAY REQUIRE REMOVAL LATER FOR LEGAL OVERHEAD.

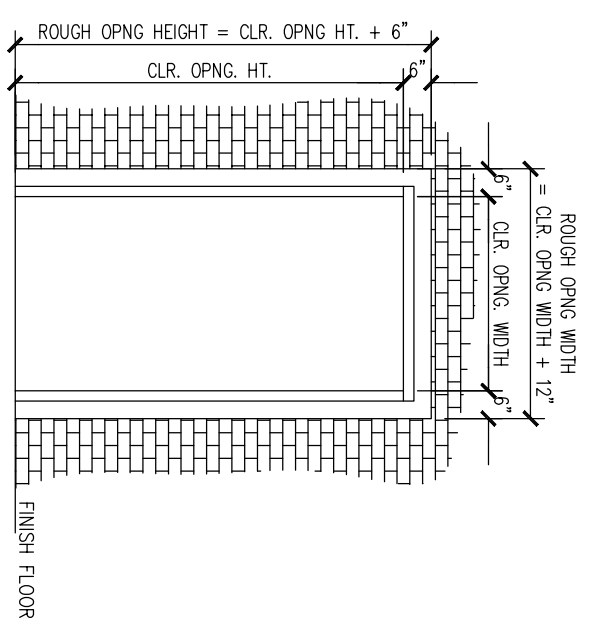
SEE MIN. OVERHEAD TABLE

CONSULT LOCAL SALES OFFICE IF TRAVEL > 50 FT.



HOISTWAY PLAN

- 1 36" SQ. BLOCKOUT @ PIT FLR. FOR JACK UNIT
- 2 LIGHT SWITCH-18" ABOVE LOWEST LANDING (BY OTHERS)
- 3 PIT STOP SWITCH
- 4 PIT LADDER (BY OTHERS)
- 5 SPRING BUFFERS LOCATED ON PIT FLOOR
- 6 LIMIT SWITCH
- 7 TAPE SELECTOR



ROUGH OPENING FOR ENTRANCE INSTALLATION
 CMU CONCRETE CONSTRUCTION ONLY.
 ROUGH OPENING IS NOT REQUIRED FOR DRY WALL CONSTRUCTION

PLEASE NOTE THAT THESE RAIL REACTION NUMBERS ARE ESTIMATES AND ARE SUBJECT TO CHANGE AS ACCURATE INFORMATION BECOMES AVAILABLE.

SPECIFICATION		
USAGE	PASSENGER	
LOADING CLASS	A	
CAPACITY (LBS.)	3000	
RATED SPEED (FPM)	100,125,150	
RISE	MAX 50'-0"	
RAIL REACTION (SEISMIC)		
MAX. RAIL BRKT SPAN		14'-0"
	R1 (LBS.)	1750
	R2 (LBS.)	875
MAX. RAIL BRKT SPAN (OSA)		9'-0"
	R1 (LBS.)	1600
	R2 (LBS.)	800
MIN. OVERHEAD REQUIRED		
ENTRANCE HEIGHT	CAB HEIGHT	MIN. OVERHEAD
7'-0"	8'-0"	12'-3"
	9'-0"	13'-3"
	10'-0"	14'-3"
	9'-0"	13'-3"
	10'-0"	14'-3"
	10'-0"	14'-3"
NOTE: IF CAR TOP GUARD RAIL IS REQUIRED, ADD 3" TO THE MIN. O.H.		
REV.	DATE	BY
REVISIONS		
NOTE: WHEN THE EQUIPMENT HAS BEEN RELEASED FOR FABRICATION, ANY CHANGES MADE AFTER APPROVAL WILL RESULT IN ADDITIONAL COST AND COMPLETION TIME.		
PROJECT:		<input checked="" type="checkbox"/> FOR APPROVAL
ADDRESS:		<input type="checkbox"/> REVISED FOR APPROVAL
CONTRACTOR:		<input type="checkbox"/> FINAL DISTRIBUTION
ARCHITECT:		<input type="checkbox"/> REVISED FINAL DISTRIBUTION
CONSULTANT:		
DRAWN: JC	DATE: 9/6/13	APPROVER: JC
DWS. TITLE: HOISTWAY PLAN & SECTION		
PROJECT NO.:	EL#:	DRAWING NO.:
	1	101