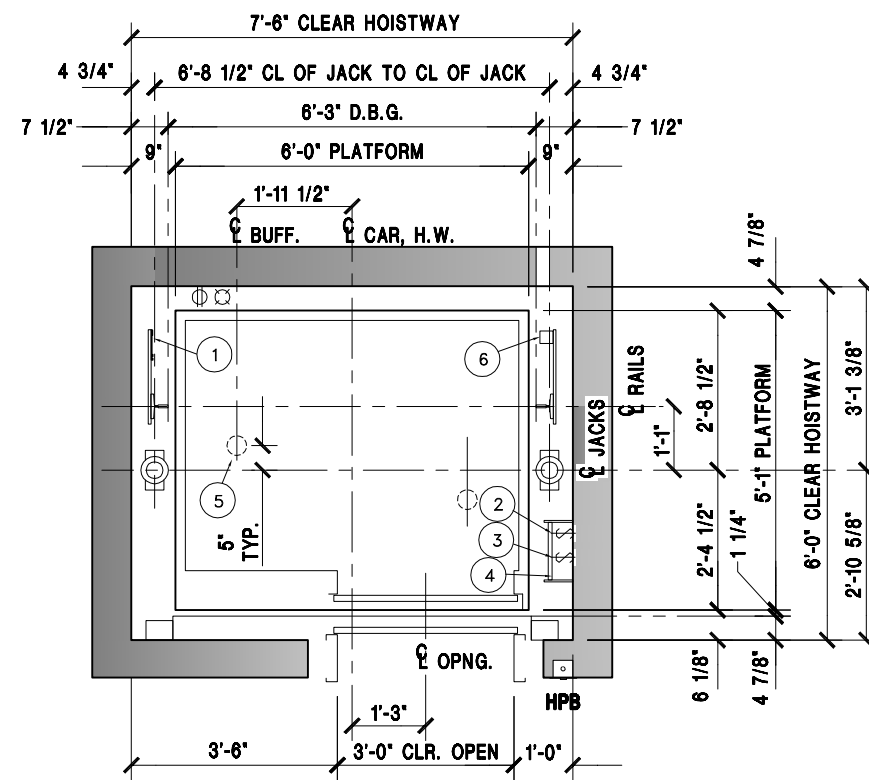


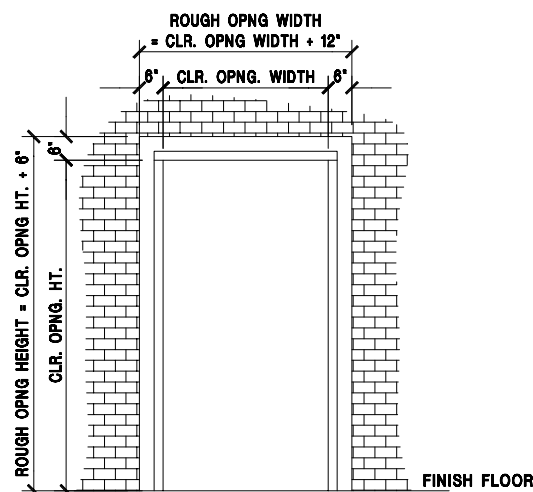
HOISTWAY SECTION



RIGHT HAND OPENING AS SHOWN;
LEFT HAND OPENING OPPOSITE

HOISTWAY PLAN

- 1 TAPE SELECTOR
- 2 LIGHT SWITCH-18" ABOVE LOWEST LANDING (BY OTHERS)
- 3 PIT STOP SWITCH
- 4 PIT LADDER (BY OTHERS)
- 5 SPRING BUFFERS LOCATED ON PIT FLOOR
- 6 LIMIT SWITCH



ROUGH OPENING FOR ENTRANCE INSTALLATION
CMU, CONCRETE CONSTRUCTION ONLY;
ROUGH OPENING IS NOT REQUIRED FOR
DRY WALL CONSTRUCTION

PLEASE NOTE THAT THESE RAIL REACTION NUMBERS ARE ESTIMATES AND ARE SUBJECT TO CHANGE AS ACCURATE INFORMATION BECOMES AVAILABLE.

SPECIFICATION		
USAGE	PASSENGER	
LOADING CLASS	A	
CAPACITY (LBS.)	2100	
RATED SPEED (FPM)	100,125	
RISE	MAX. 15'-0"	
RAIL REACTION (SEISMIC)		
R1 → R2	MAX. RAIL BRKT SPAN	14'-0"
	R1 (LBS.)	1300
	R2 (LBS.)	650
	MAX. RAIL BRKT SPAN (DSA)	9'-0"
	R1 (LBS.)	1200
	R2 (LBS.)	600
REV.	DATE	BY REVISIONS
NOTE: WHEN THE EQUIPMENT HAS BEEN RELEASED FOR FABRICATION, ANY CHANGES MADE AFTER APPROVAL WILL RESULT IN ADDITIONAL COST AND COMPLETION TIME.		<input checked="" type="checkbox"/> FOR APPROVAL <input type="checkbox"/> REVISED FOR APPROVAL <input type="checkbox"/> FINAL DISTRIBUTION <input type="checkbox"/> REVISED FINAL DISTRIBUTION
PROJECT: ----		
ADDRESS: ----		
CONTRACTOR: ----		
ARCHITECT: ----		
CONSULTANT: ----		
DRAWN: JC	DATE: 9/6/13	APPROVED: JC
DWG. TITLE: HOISTWAY PLAN & SECTION		
PROJECT NO.: ---		ELE#: 1
		DRAWING NO.:
		101