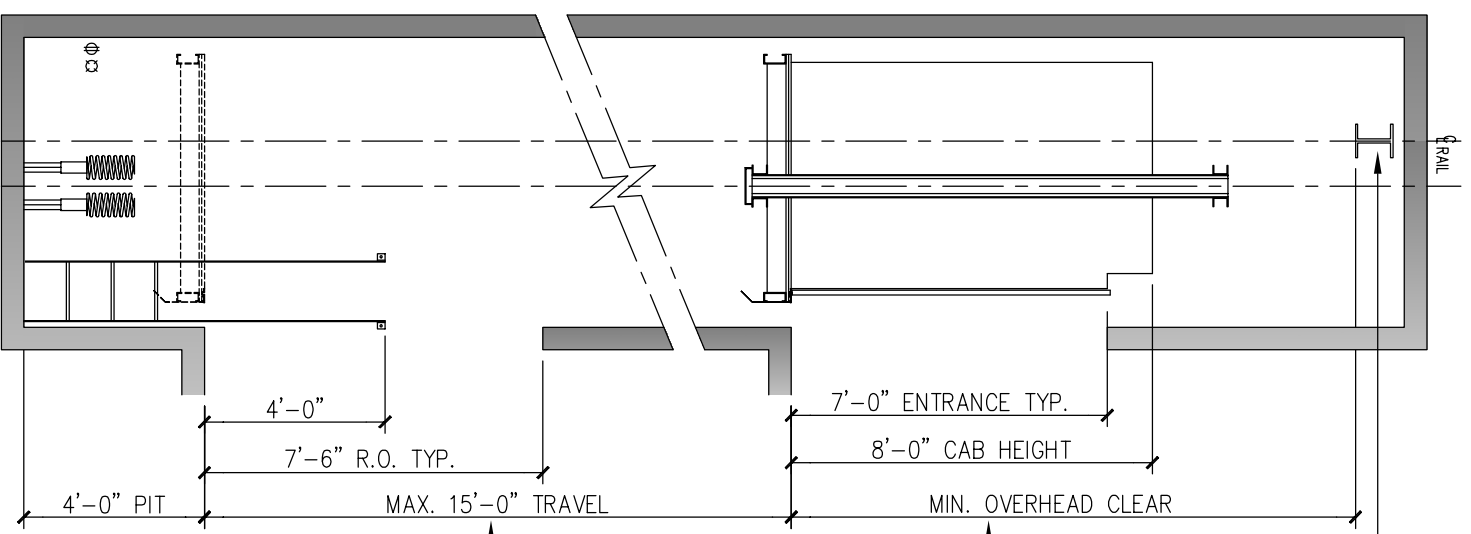


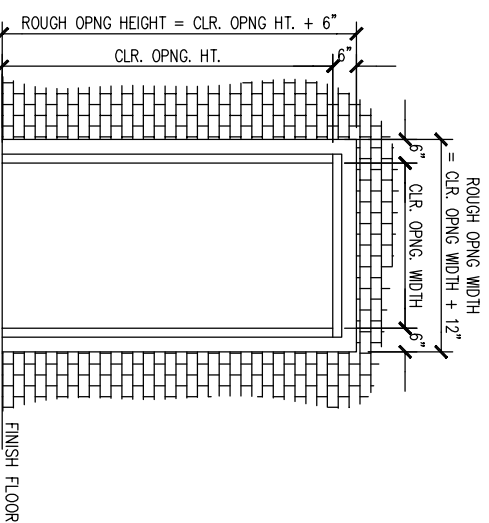
HOISTWAY SECTION



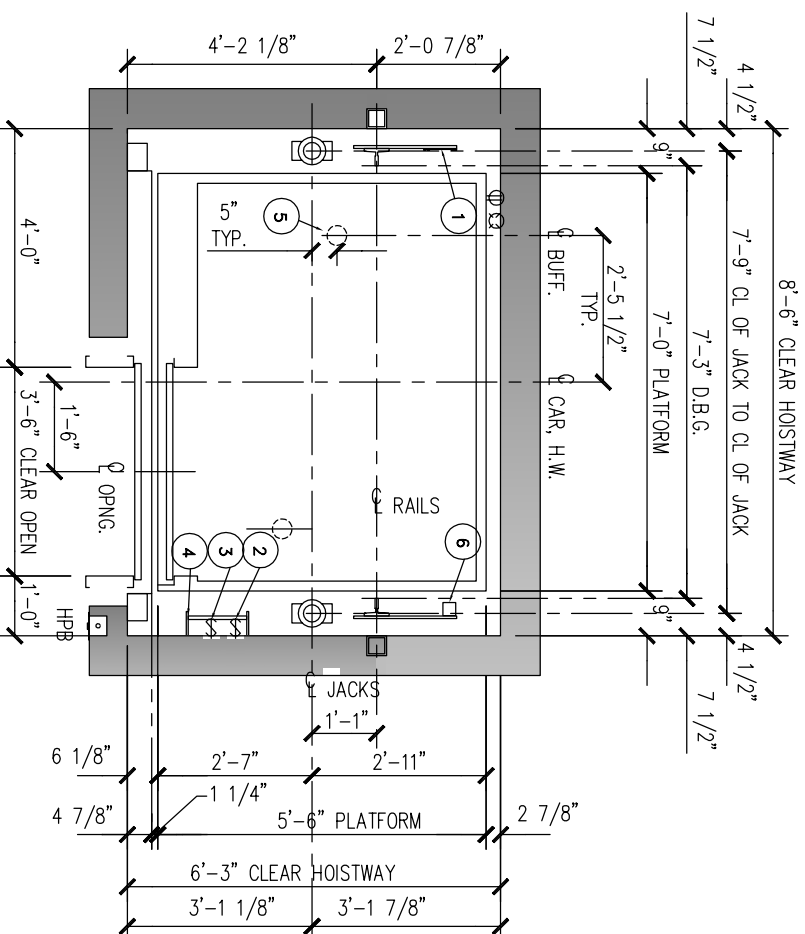
CONSULT LOCAL SALES OFFICE IF TRAVEL > 15 FT.

SEE HOLELESS ELEVATOR MIN OVERHEAD MATRIX.

SAFETY BEAM 5000 LBS. CAPACITY (BY OTHERS) CENTERED OVER RAILS AT TOP OF HOISTWAY. MAY REQUIRE REMOVAL LATER FOR LEGAL OVERHEAD.



ROUGH OPENING FOR ENTRANCE INSTALLATION
CMU, CONCRETE CONSTRUCTION ONLY;
ROUGH OPENING IS NOT REQUIRED FOR
DRY WALL CONSTRUCTION



RIGHT HAND OPENING AS SHOWN;
LEFT HAND OPENING OPPOSITE

HOISTWAY PLAN

- 1 TAPE SELECTOR
- 2 LIGHT SWITCH-18" ABOVE LOWEST LANDING (BY OTHERS)
- 3 PIT STOP SWITCH
- 4 PIT LADDER (BY OTHERS)
- 5 SPRING BUFFERS LOCATED ON PIT FLOOR
- 6 LIMIT SWITCH

PLEASE NOTE THAT THESE RAIL REACTION NUMBERS ARE ESTIMATES AND ARE SUBJECT TO CHANGE AS ACCURATE INFORMATION BECOMES AVAILABLE.

SPECIFICATION

USAGE	PASSENGER
LOADING CLASS	A
CAPACITY (LBS.)	3000
RATED SPEED (FPM)	100,125
RISE	MAX. 15'-0"
RAIL REACTION (SEISMIC)	
MAX. RAIL BRKT SPAN	14'-0"
R1 (LBS.)	1750
R2 (LBS.)	875
MAX. RAIL BRKT SPAN (DSA)	9'-0"
R1 (LBS.)	1800
R2 (LBS.)	800

REV.	DATE	BY	REVISIONS
R1			
R2			

NOTE:
WHEN THE EQUIPMENT HAS BEEN RELEASED FOR FABRICATION, ANY CHANGES MADE AFTER APPROVAL WILL RESULT IN ADDITIONAL COST AND COMPLETION TIME.

FOR APPROVAL
 REVISED FOR APPROVAL
 FINAL DISTRIBUTION
 REVISED FINAL DISTRIBUTION

PROJECT: -----
ADDRESS: -----
CONTRACTOR: -----
ARCHITECT: -----
CONSULTANT: -----

DWG. TITLE: HOISTWAY PLAN & SECTION
DATE: 9/6/13
APPROVER: JC
PROJECT NO.: -----

DRWING NO.: -----
Elev: 1