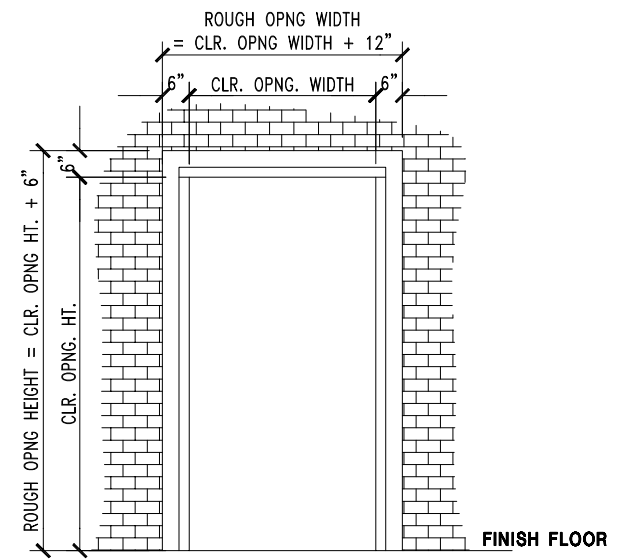
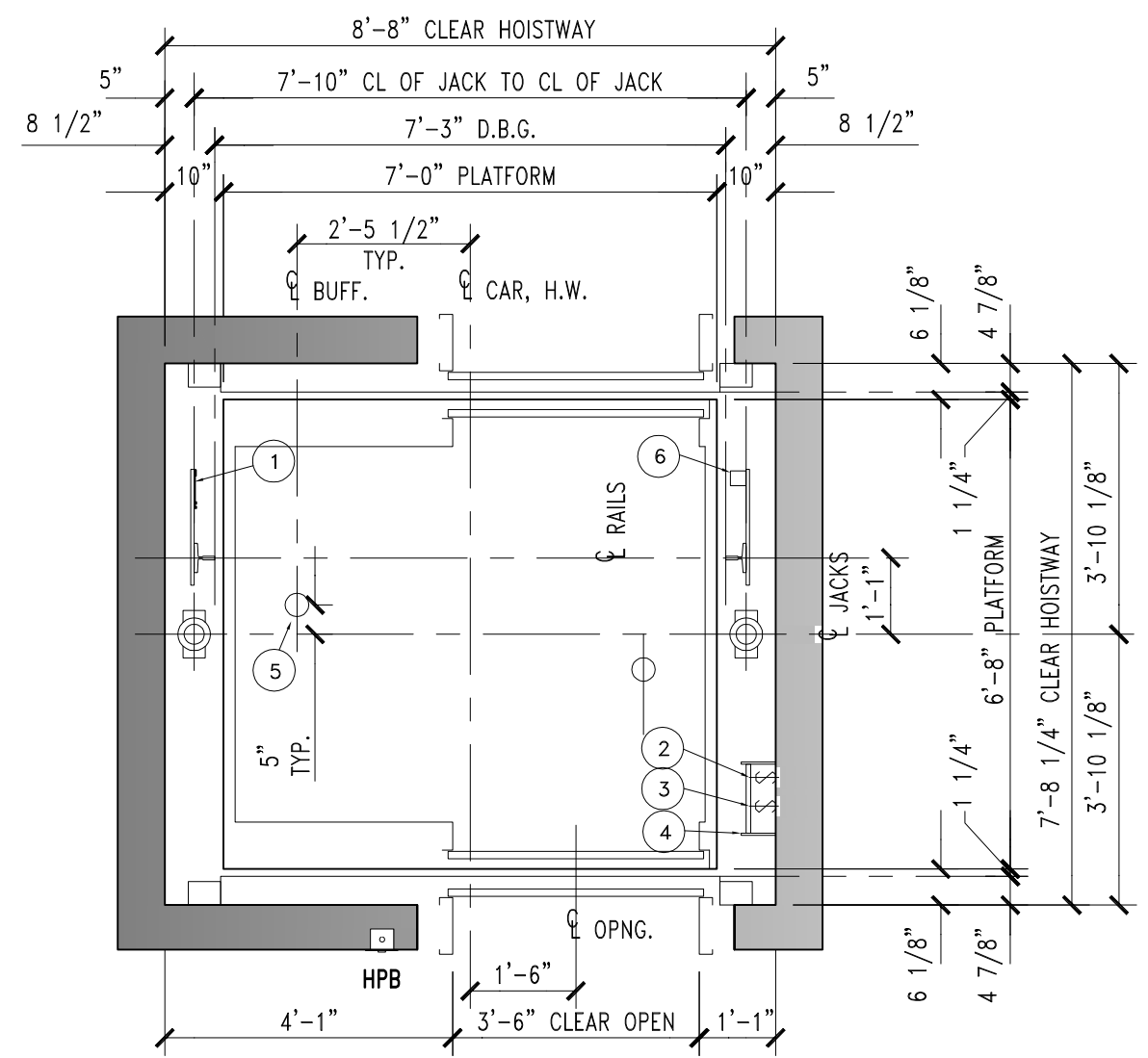


SAFETY BEAM 5000 LBS. CAPACITY (BY OTHERS) CENTERED OVER RAILS AT TOP OF HOISTWAY. MAY REQUIRE REMOVAL LATER FOR LEGAL OVERHEAD.

SEE HOLELESS ELEVATOR MIN OVERHEAD MATRIX.

CONSULT LOCAL SALES OFFICE IF TRAVEL > 15 FT.

HOISTWAY SECTION



**ROUGH OPENING FOR ENTRANCE INSTALLATION
CMU, CONCRETE CONSTRUCTION ONLY;
ROUGH OPENING IS NOT REQUIRED FOR
DRY WALL CONSTRUCTION**

HOISTWAY PLAN

- 1 TAPE SELECTOR
- 2 LIGHT SWITCH-18" ABOVE LOWEST LANDING (BY OTHERS)
- 3 PIT STOP SWITCH
- 4 PIT LADDER (BY OTHERS)
- 5 SPRING BUFFERS LOCATED ON PIT FLOOR
- 6 LIMIT SWITCH

PLEASE NOTE THAT THESE RAIL REACTION NUMBERS ARE ESTIMATES AND ARE SUBJECT TO CHANGE AS ACCURATE INFORMATION BECOMES AVAILABLE.

SPECIFICATION		
USAGE	PASSENGER	
LOADING CLASS	A	
CAPACITY (LBS.)	3500	
RATED SPEED (FPM)	100,125	
RISE	MAX. 15'-0"	
RAIL REACTION (SEISMIC)		
R2 R1	MAX. RAIL BRKT SPAN	14'-0"
	R1 (LBS.)	2095
	R2 (LBS.)	1048
	MAX. RAIL BRKT SPAN (DSA)	9'-0"
	R1 (LBS.)	1950
	R2 (LBS.)	975
REV.	DATE	BY REVISIONS
NOTE: WHEN THE EQUIPMENT HAS BEEN RELEASED FOR FABRICATION. ANY CHANGES MADE AFTER APPROVAL WILL RESULT IN ADDITIONAL COST AND COMPLETION TIME.		
		<input checked="" type="checkbox"/> FOR APPROVAL <input type="checkbox"/> REVISED FOR APPROVAL <input type="checkbox"/> FINAL DISTRIBUTION <input type="checkbox"/> REVISED FINAL DISTRIBUTION
PROJECT: ----		
ADDRESS: ----		
CONTRACTOR: ----		
ARCHITECT: ----		
CONSULTANT: ----		
DRAWN: JC	DATE: 9/6/13	APPROVED: JC
DWG. TITLE: HOISTWAY PLAN & SECTION		
PROJECT NO.: ---		ELE#: 1
		DRAWING NO.:
		101