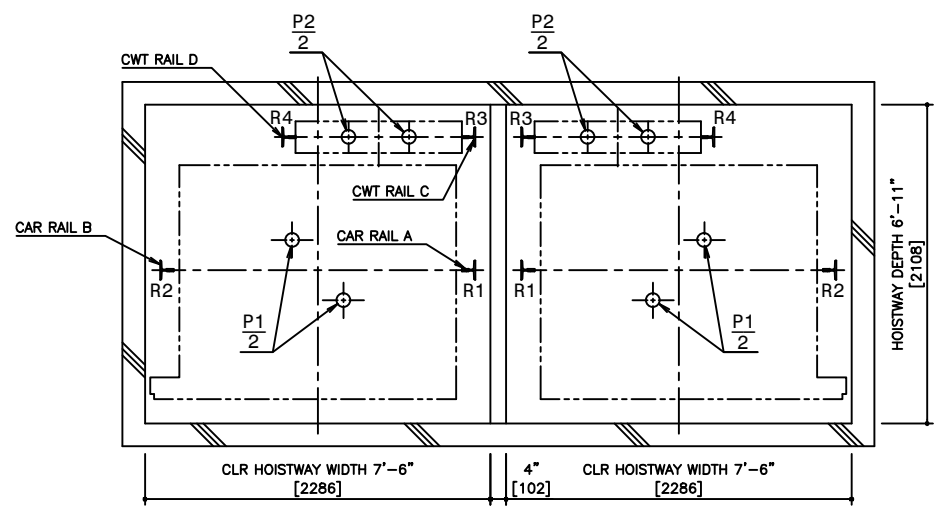
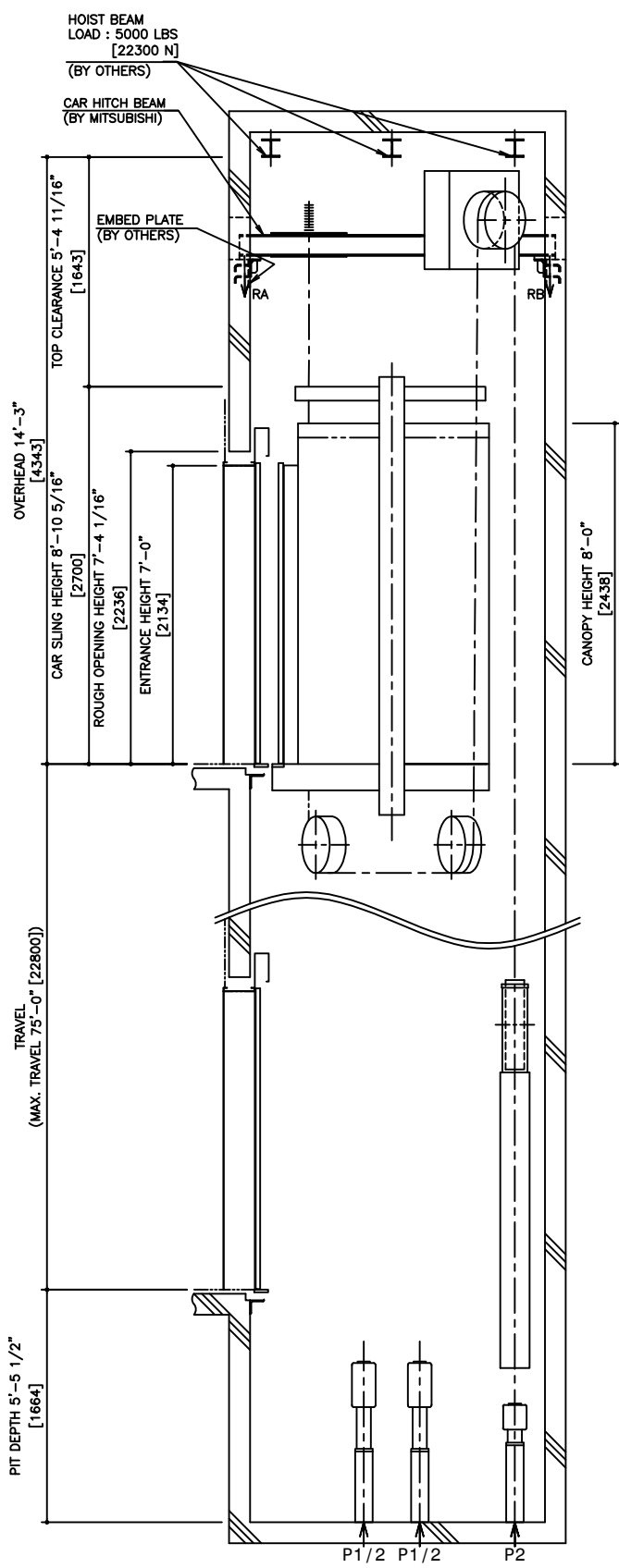


HOISTWAY PLAN  
WITHOUT CWT SAFETY

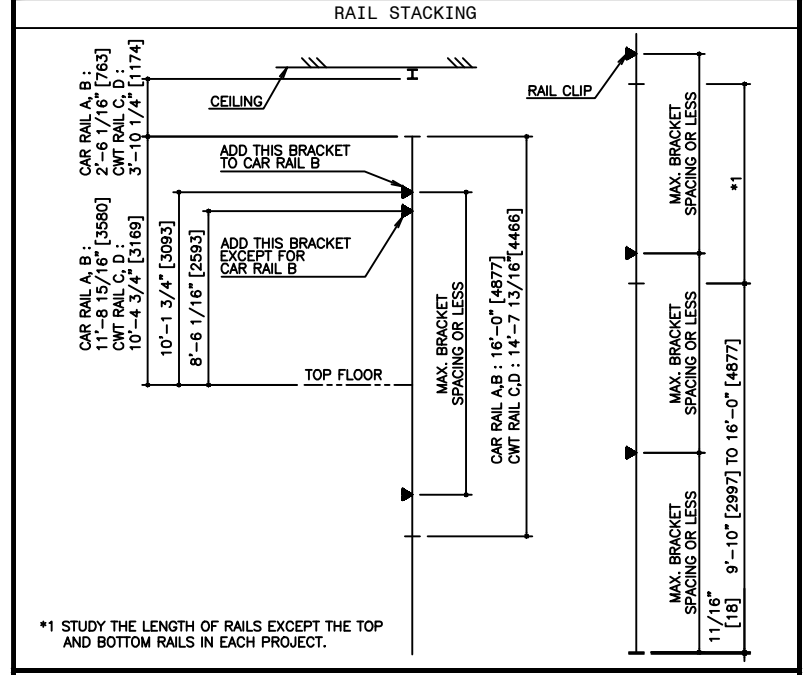


PIT PLAN  
WITHOUT CWT SAFETY



HOISTWAY SECTION  
WITHOUT CWT SAFETY

SPECIFICATIONS		
SERIES	DIAMOND TRAC	
LOAD	2000 LBS [900 kg]	
SPEED	200 FPM [60 m/min]	
REGULATION / CODE	ASME A17.1S - 2005	
TRAVEL	MAX. TRAVEL : 75'-0" [22.8 m]	
DOOR TYPE	SS	
GUIDE RAIL	CAR	ZONE 0 TO 2 T127-1/B
	CWT	ZONE 3 & 4 T127-2/B
CWT SAFETY	ZONE 0 TO 2	T127-1/B
	ZONE 3 & 4	T127-2/B
NOT APPLIED		



RAIL BRACKET SPACING				
SEISMIC ZONE (RAIL SIZE)	ZONE 0 TO 2 (T127-1/B)		ZONE 3 & 4 (T127-2/B)	
	CAR	CWT	CAR	CWT
RAIL BRACKET SPACING	15'-9" [4800]	15'-3 1/16" [4650]	12'-11 1/2" [3950]	12'-9 9/16" [3900]

SEISMIC ZONE (RAIL SIZE)	RAIL REACTION LOAD			
	CAR RAIL A, B		CWT RAIL C, D	
	F1X	F1Y	F1X	F1Y
ZONE 0 TO 2 (T127-1/B)	1200 LBS [5200 N]	600 LBS [2600 N]	1300 LBS [5600 N]	700 LBS [2800 N]
ZONE 3 & 4 (T127-2/B)	2400 LBS [10400 N]	1200 LBS [5200 N]	2600 LBS [11200 N]	1300 LBS [5600 N]

CAR HITCH BEAM LOAD			
STATIC LOAD		DYNAMIC LOAD	
RA	RB	RA	RB
3200 LBS [14000 N]	900 LBS [4000 N]	6300 LBS [28000 N]	1800 LBS [8000 N]

SEISMIC ZONE (RAIL SIZE)	RAIL REACTION LOAD				BUFFER REACTION LOAD	
	R1	R2	R3	R4	P1	P2
	ZONE 0 TO 2 (T127-1/B)	9300 LBS [42000 N]	8700 LBS [39000 N]	8200 LBS [37000 N]	5400 LBS [24000 N]	30200 LBS [134000 N]
ZONE 3 & 4 (T127-2/B)	9700 LBS [43000 N]	9100 LBS [41000 N]	8600 LBS [38000 N]	5800 LBS [26000 N]		

POWER FEEDER DATA 1CAR												
MOTOR	STANDARD VOLTAGE 208V			STANDARD VOLTAGE 480V			POWER SUPPLY CAPACITY [kVA]	HEAT EMISSION				
	CURRENT [A]	FLU [A]	FLAcc [A]	CURRENT [A]	FLU [A]	FLAcc [A]		HOISTWAY (EXCEPT CAR LIGHTING) [BTU/Hr]	CONTROL PANEL ROOM [W]			
7.5 [HP]	5.6 [kW]	28 [A]	47 [A]	40 [A]	12 [A]	21 [A]	15 [A]	7 [kW]	1190 [BTU/Hr]	350 [W]	2730 [W]	800 [W]

POWER CURRENT CORRESPONDING TO LOCAL SUPPLY VOLTAGE (FLU OR FLAcc) [A]  
 = EACH CURRENT (FLU OR FLAcc) [A] x STANDARD VOLTAGE (E1 OR E2) [V]  
 LOCAL SUPPLY VOLTAGE (E) [V]

**DISCLAIMER:**  
 THESE CAD DRAWINGS SHOULD BE USED FOR REFERENCE ONLY. MEUS DISCLAIMS ALL RESPONSIBILITY FOR ANY REPRODUCTION, MODIFICATION, DISTRIBUTION OR INTEGRATION OF THESE CAD DRAWINGS INTO OTHER ARCHITECTURAL AND STRUCTURAL DRAWINGS. MEUS MARKETS NO WARRANTIES OF ANY KIND WITH RESPECT TO THE ACCURACY OR COMPLETENESS OF THESE CAD SCHEMATIC DRAWINGS FOR ANY PURPOSE. MEUS HEREBY EXPRESSLY DISCLAIMS ALL WARRANTIES, EXPRESSED OR IMPLIED, INCLUDING THE IMPLIED WARRANTIES OF MERCHANTABILITY AND FITNESS FOR A PARTICULAR PURPOSE.  
 Copyright (c) 2005 Mitsubishi Electric & Electronic USA, Inc. All rights reserved.

NOTE :  
 WHEN THE CANOPY HEIGHT IS CHANGED FROM THE DIMENSION ON THIS DRAWING, OVERHEAD AND THE BRACKET SPAN FOR UPPER RAILS SHALL BE CHANGED AS WELL.

NO.	DATE	BY	REVISIONS
-	02/13/07	-	CREATED DRAWING

PROJECT:	-
ELEV. NO.:	-
DWG. TITLE:	-
ADMIN. NO.:	-
DWG. NO.:	EZ-B-0002
REV.:	



SCALE : 1/50

NOT TO BE USED FOR CONSTRUCTION