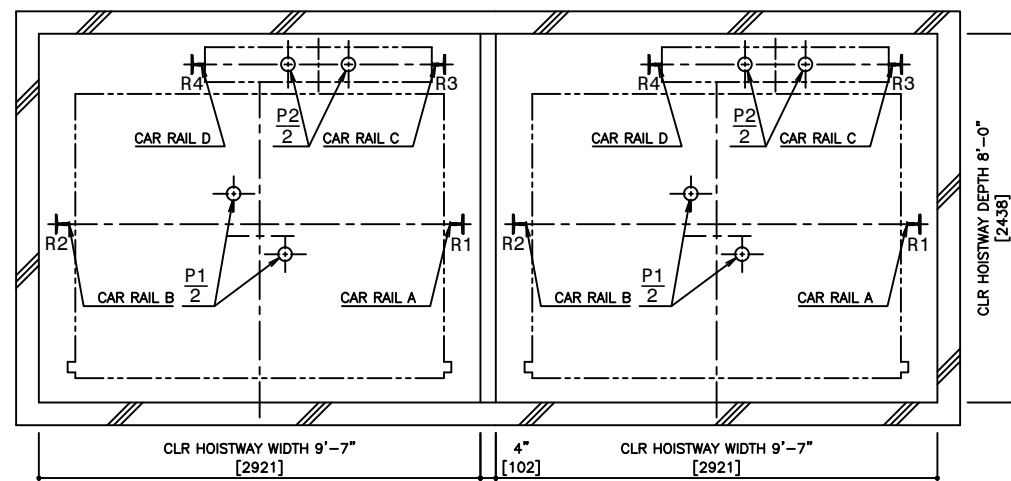


CONTROL ROOM DEPTH 8'-0"
[2438]

VENTILATION (BY OTHERS)
LIGHT SWITCH AND OUTLET (BY OTHERS)

SEPARATE BEAM (BY OTHERS)

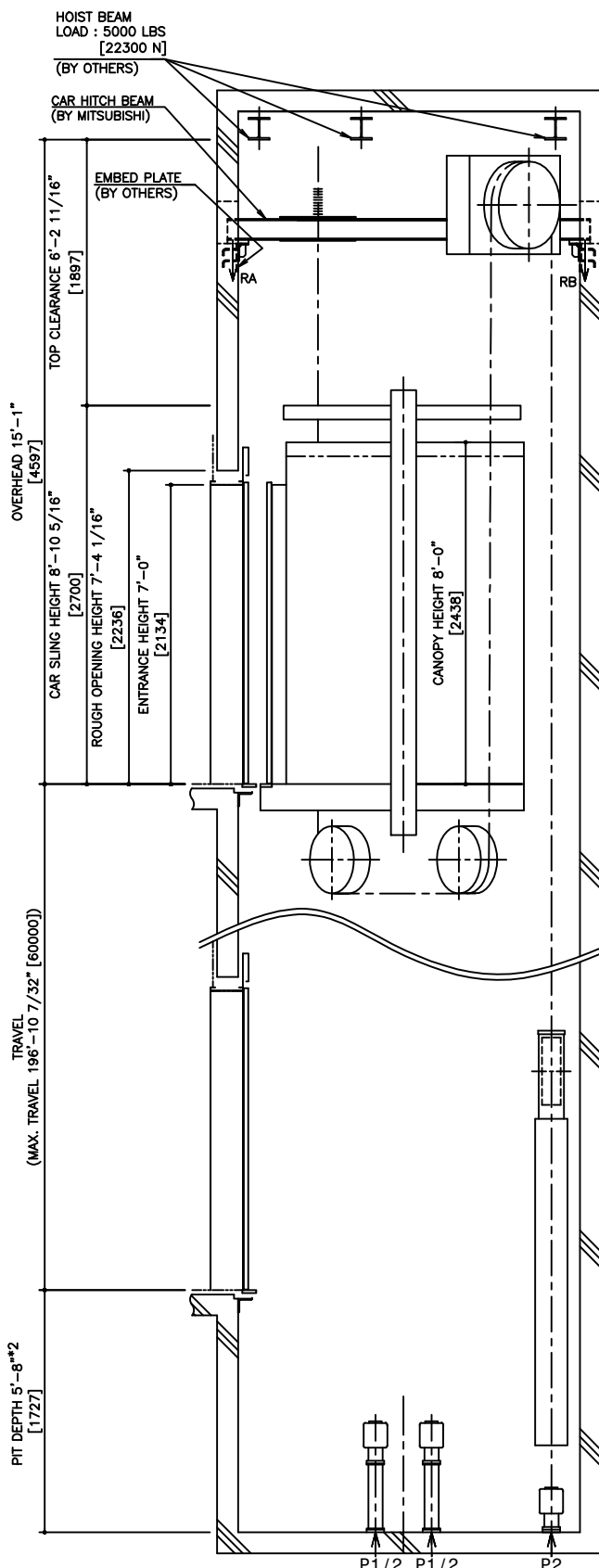
SILL SUPPORT BEAM (BY OTHERS)



CLR HOISTWAY DEPTH 8'-0"
[2438]

CLR HOISTWAY WIDTH 9'-7"
[2921]

CLR HOISTWAY WIDTH 9'-7"
[2921]



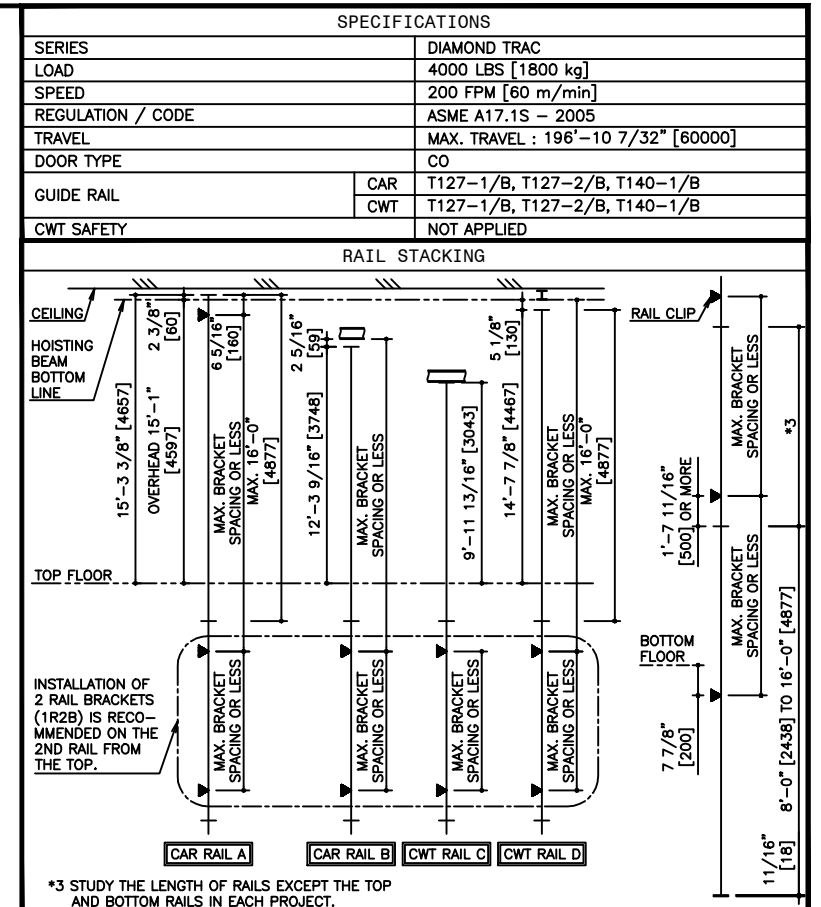
PIT DEPTH 5'-8"
[1727]

OVERHEAD 15'-1"
[4597]

TOP CLEARANCE 6'-2 11/16"
[1897]

**HOISTWAY SECTION
WITHOUT CWT SAFETY**

*1,*2 : AS SHOWN IN THE FIGURE ABOVE, AN INSPECTION HATCH FOR USE IN THE MAINTENANCE OF THE CAR DOOR OPERATOR SHALL BE PROVIDED ABOVE THE ENTRANCE ON THE BOTTOM FLOOR, IF THE LANDING IS THE ONLY ONE IN THAT SIDE. HOWEVER, THIS INSPECTION HATCH WILL BE UNNECESSARY, IF THE PIT DEPTH CAN BE DEEPENED BY 0'-6 1/2" [165].



*3 STUDY THE LENGTH OF RAILS EXCEPT THE TOP AND BOTTOM RAILS IN EACH PROJECT.

RAIL SIZE	ZONE 0 TO 2						ZONE 3 & 4					
	T127-1/B CAR	T127-2/B CWT	T140-1/B CAR	T140-1/B CWT	T127-1/B CAR	T127-2/B CWT	T140-1/B CAR	T140-1/B CWT	T127-1/B CAR	T127-2/B CWT	T140-1/B CAR	T140-1/B CWT
RAIL BRACKET SPACING	11'-11 1/16" [3650]	10'-11 7/8" [3390]	12'-3 5/8" [3790]	13'-11 5/16" [4290]	15'-7" [4790]	16'-4 7/8" [5090]	7'-8 1/2" [2390]	7'-8 1/2" [2390]	10'-7 15/16" [3290]	10'-6" [3200]	14'-1 5/16" [4300]	13'-3 7/16" [4050]

SEISMIC ZONE	CAR RAIL A, B				CWT RAIL C, D			
	FIX	FIY	FIX	FIY	FIX	FIY	FIX	FIY
ZONE 0 TO 2	1800 LBS [8100 N]	900 LBS [4100 N]	2000 LBS [8900 N]	1000 LBS [4500 N]				
ZONE 3 & 4	3500 LBS [15600 N]	1800 LBS [8100 N]	4000 LBS [17800 N]	2000 LBS [8900 N]				

RA	STATIC LOAD		DYNAMIC LOAD	
	RA	RB	RA	RB
5400 LBS [24000 N]	1800 LBS [8000 N]	10800 LBS [48000 N]	3400 LBS [15000 N]	

SEISMIC ZONE (RAIL SIZE)	RAIL REACTION LOAD				BUFFER REACTION LOAD	
	R1	R2	R3	R4	P1	P2
T127-1/B	15900 LBS [71000 N]	14800 LBS [66000 N]	15100 LBS [68000 N]	8500 LBS [38000 N]	47200 LBS [210000 N]	39400 LBS [175000 N]
T127-2/B	16600 LBS [74000 N]	15500 LBS [69000 N]	15900 LBS [71000 N]	9200 LBS [41000 N]		
T140-1/B	17400 LBS [77000 N]	16300 LBS [73000 N]	16600 LBS [74000 N]	9900 LBS [44000 N]		

MOTOR [HP]	STANDARD VOLTAGE 208V				STANDARD VOLTAGE 480V				POWER SUPPLY CAPACITY [kVA]	HEAT EMISSION [BTU/Hr]			
	FLU [A]	FLAcc [A]	BREAKER IN CONTROL PANEL [A]	BREAKER IN CONTROL PANEL [A]	FLU [A]	FLAcc [A]	BREAKER IN CONTROL PANEL [A]	BREAKER IN CONTROL PANEL [A]		[W]	[W]	[W]	[W]
16.1	52	91	75	23	40	30	12	2390	700	4780	1400		

POWER CURRENT CORRESPONDING TO LOCAL SUPPLY VOLTAGE (FLU OR FLAcc) [A]
= EACH CURRENT (FLU OR FLAcc) [A] X STANDARD VOLTAGE (E1 OR E2) [V]
= LOCAL SUPPLY VOLTAGE (E) [V]

DISCLAIMER:
THESE CAD DRAWINGS SHOULD BE USED FOR REFERENCE ONLY. MEUS DISCLAIMS ALL RESPONSIBILITY FOR ANY REPRODUCTION, MODIFICATION, DISTRIBUTION OR INTEGRATION OF THESE CAD DRAWINGS INTO OTHER ARCHITECTURAL AND STRUCTURAL DRAWINGS. MEUS MARKETS NO WARRANTIES OF ANY KIND WITH RESPECT TO THE ACCURACY OR COMPLETENESS OF THESE CAD SCHEMATIC DRAWINGS FOR ANY PURPOSE. MEUS HEREBY EXPRESSLY DISCLAIMS ALL WARRANTIES, EXPRESSED OR IMPLIED, INCLUDING THE IMPLIED WARRANTIES OF MERCHANTABILITY AND FITNESS FOR A PARTICULAR PURPOSE.
Copyright (c) 2005 Mitsubishi Electric & Electronic USA, Inc. All rights reserved.

NOTE :
WHEN THE CANOPY HEIGHT IS CHANGED FROM THE DIMENSION ON THIS DRAWING, OVERHEAD AND THE BRACKET SPAN FOR UPPER RAILS SHALL BE CHANGED AS WELL.

NO.	DATE	BY	REVISIONS
-	03/16/10	-	CREATED DRAWING

PROJECT: -
ELEV. NO.: -
DWG. TITLE: -
ADMIN. NO.: -
DWG. NO.: EZ-B-0130
REV. -

MITSUBISHI ELEVATORS & ESCALATORS
DIAMOND TRAC

SCALE : 1/50

NOT TO BE USED FOR CONSTRUCTION