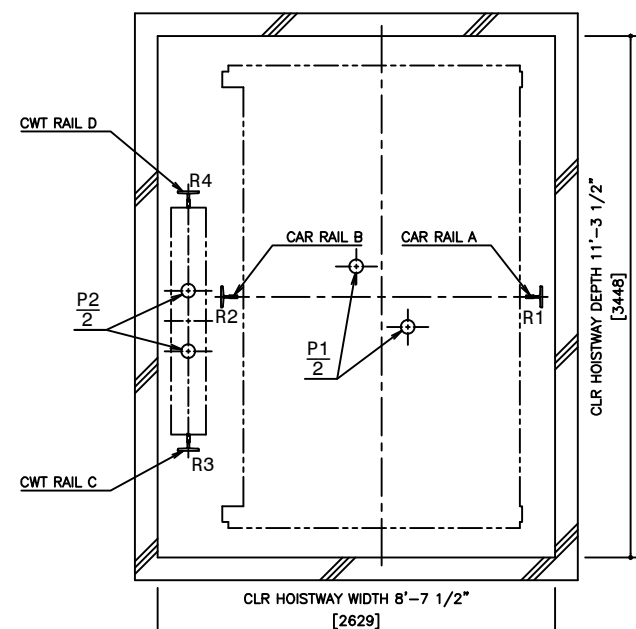
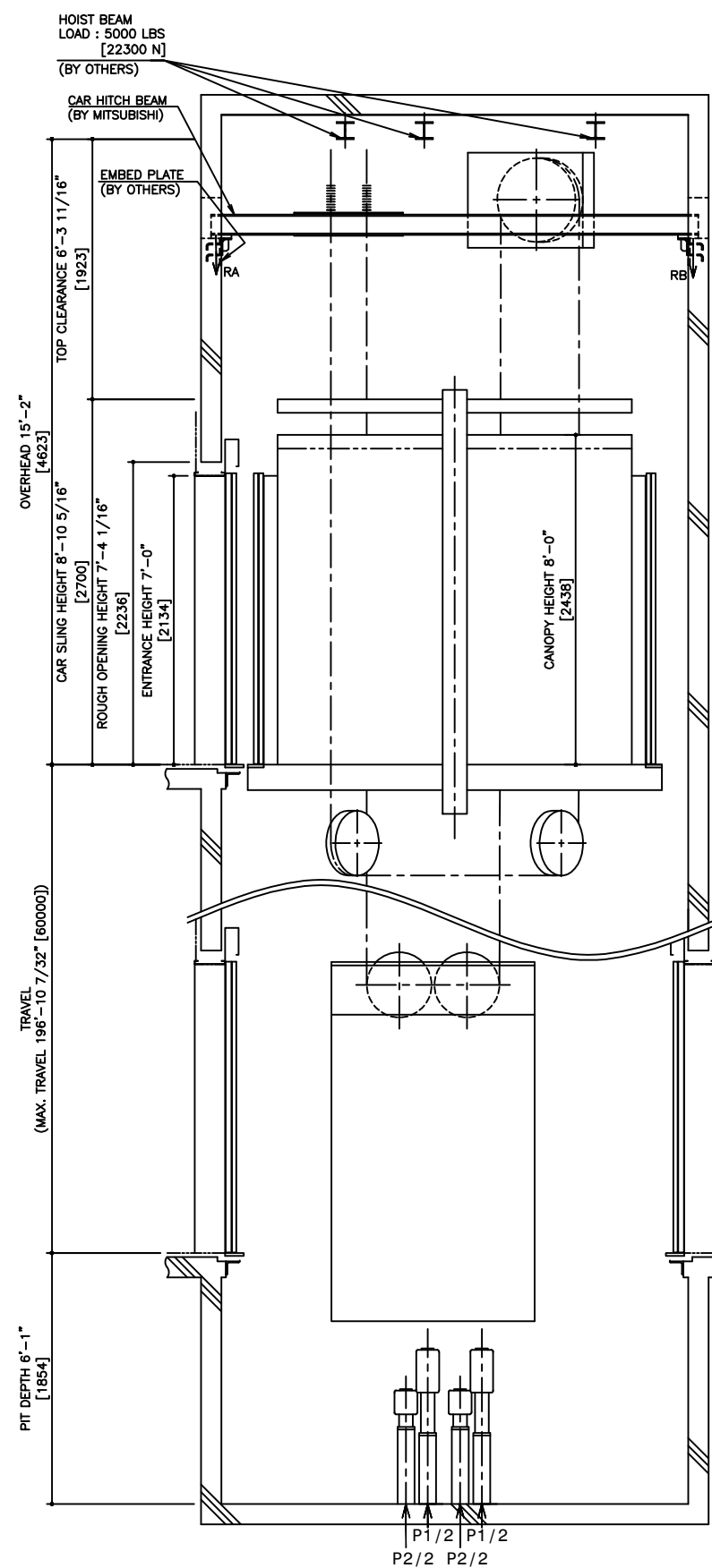


HOISTWAY PLAN
WITHOUT CWT SAFETY



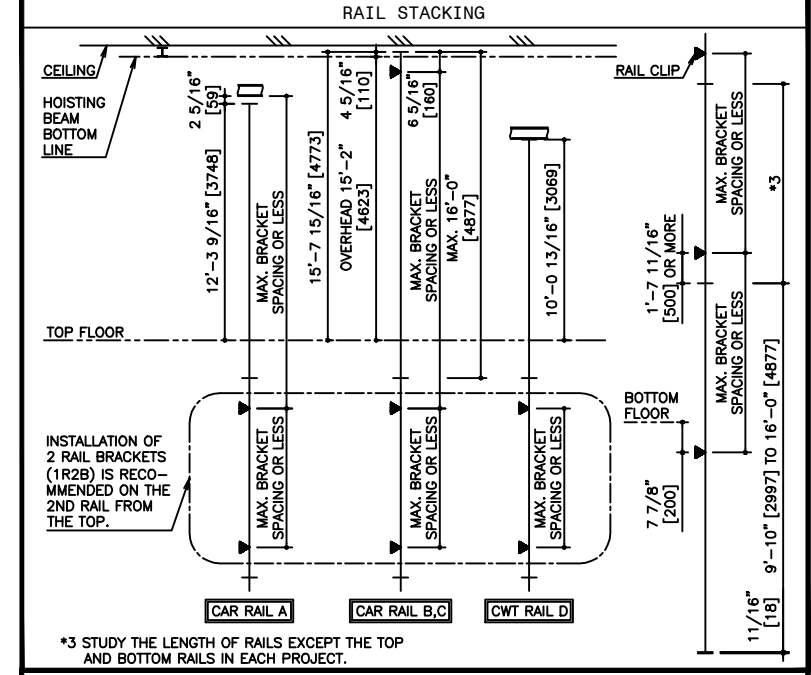
PIT PLAN
WITHOUT CWT SAFETY



HOISTWAY SECTION
WITHOUT CWT SAFETY

*1,*2 : AS SHOWN IN THE FIGURE ABOVE, AN INSPECTION HATCH FOR USE IN THE MAINTENANCE OF THE CAR DOOR OPERATOR SHALL BE PROVIDED ABOVE THE ENTRANCE ON THE BOTTOM FLOOR, IF THE LANDING IS THE ONLY ONE IN THAT SIDE. HOWEVER, THIS INSPECTION HATCH WILL BE UNNECESSARY, IF THE PIT DEPTH CAN BE DEEPENED BY 0'-6 1/2" [165].

SPECIFICATIONS	
SERIES	DIAMOND TRAC
LOAD	5000 LBS [2250 kg]
SPEED	200 FPM [60 m/min]
REGULATION / CODE	ASME A17.1S - 2005
TRAVEL	MAX. TRAVEL : 196'-10 7/32" [60000]
DOOR TYPE	2S
GUIDE RAIL	CAR T127-1/B, T127-2/B, T140-1/B
CWT SAFETY	CWT T127-1/B, T127-2/B, T140-1/B
	NOT APPLIED



RAIL BRACKET SPACING					
SEISMIC ZONE	ZONE 0 TO 2			ZONE 3 & 4	
RAIL SIZE	T127-1/B	T127-2/B	T140-1/B	T127-1/B	T140-1/B
RAIL BRACKET SPACING	CAR	CWT	CAR	CAR	CWT
	9'-6 3/16" [2900]	10'-4" [3190]	13'-3 7/16" [3800]	15'-5 1/16" [4700]	16'-4 7/8" [5000]
	9'-6 3/16" [2900]	10'-4" [3190]	13'-3 7/16" [3800]	15'-5 1/16" [4700]	16'-4 7/8" [5000]
	9'-6 3/16" [2900]	10'-4" [3190]	13'-3 7/16" [3800]	15'-5 1/16" [4700]	16'-4 7/8" [5000]

RAIL REACTION LOAD				
SEISMIC ZONE	CAR RAIL A, B		CWT RAIL C, D	
	FIX	FIY	FIX	FIY
ZONE 0 TO 2	2000 LBS [8900 N]	1000 LBS [4500 N]	2300 LBS [10300 N]	1200 LBS [5400 N]
ZONE 3 & 4	4000 LBS [17800 N]	2000 LBS [8900 N]	4500 LBS [20100 N]	2300 LBS [10300 N]

CAR HITCH BEAM LOAD			
STATIC LOAD		DYNAMIC LOAD	
RA	RB	RA	RB
5600 LBS [25000 N]	1700 LBS [8000 N]	11000 LBS [49000 N]	3300 LBS [15000 N]

PIT REACTION LOAD						
SEISMIC ZONE (RAIL SIZE)	RAIL REACTION LOAD				BUFFER REACTION LOAD	
	R1	R2	R3	R4	P1	P2
T127-1/B	16900 LBS [74800 N]	20300 LBS [90300 N]	4100 LBS [18100 N]	16300 LBS [72300 N]	55200 LBS [248000 N]	45300 LBS [201000 N]
T127-2/B	17800 LBS [78100 N]	21100 LBS [93500 N]	4800 LBS [21400 N]	17000 LBS [75600 N]	55200 LBS [248000 N]	45300 LBS [201000 N]
T140-1/B	18300 LBS [81300 N]	21800 LBS [96700 N]	5600 LBS [24800 N]	17800 LBS [78800 N]	55200 LBS [248000 N]	45300 LBS [201000 N]

POWER FEEDER DATA 1CAR									
MOTOR	STANDARD VOLTAGE 208V			STANDARD VOLTAGE 480V			POWER SUPPLY CAPACITY [kVA]	HEAT EMISSION	
	CURRENT [A]	FLU [A]	FLAcc [A]	CURRENT [A]	FLU [A]	FLAcc [A]		HOISTWAY (EXCEPT CAR LIGHTING) [BTU/H]	CONTROL PANEL ROOM [W]
[HP] [kW]	65	113	100	28	49	40	14	3070	900 5970 1750

POWER CURRENT CORRESPONDING TO LOCAL SUPPLY VOLTAGE (FLU or FLAcc) [A]
= EACH CURRENT (FLU or FLAcc) [A] x STANDARD VOLTAGE (E1 or E2) [V]
LOCAL SUPPLY VOLTAGE (E) [V]

DISCLAIMER:
THESE CAD DRAWINGS SHOULD BE USED FOR REFERENCE ONLY. MEUS DISCLAIMS ALL RESPONSIBILITY FOR ANY REPRODUCTION, MODIFICATION, DISTRIBUTION OR INTEGRATION OF THESE CAD DRAWINGS INTO OTHER ARCHITECTURAL AND STRUCTURAL DRAWINGS. MEUS MARKETS NO WARRANTIES OF ANY KIND WITH RESPECT TO THE ACCURACY OR COMPLETENESS OF THESE CAD SCHEMATIC DRAWINGS FOR ANY PURPOSE. MEUS HEREBY EXPRESSLY DISCLAIMS ALL WARRANTIES, EXPRESSED OR IMPLIED, INCLUDING THE IMPLIED WARRANTIES OF MERCHANTABILITY AND FITNESS FOR A PARTICULAR PURPOSE.
Copyright (c) 2005 Mitsubishi Electric & Electronic USA, Inc. All rights reserved.

NOTE :
WHEN THE CANOPY HEIGHT IS CHANGED FROM THE DIMENSION ON THIS DRAWING, OVERHEAD AND THE BRACKET SPAN FOR UPPER RAILS SHALL BE CHANGED AS WELL.

NO.	DATE	BY	REVISIONS
-	03/16/10	-	CREATED DRAWING

PROJECT: -
ELEV. NO.: -
DWG. TITLE: -
ADMIN. NO.: -
DWG. NO.: EZ-B-0105
REV. -

MITSUBISHI
ELEVATORS & ESCALATORS

DIAMOND TRAC

SCALE : 1/50

NOT TO BE USED FOR CONSTRUCTION